

NASHVILLE, TENNESSEE

AL-282 (FAA)

25163

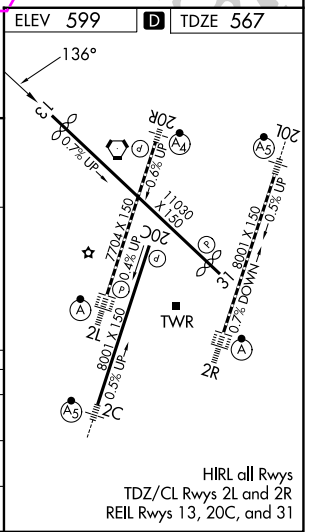
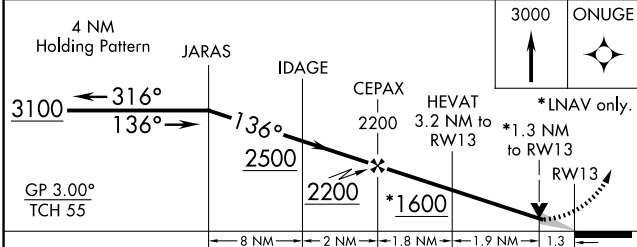
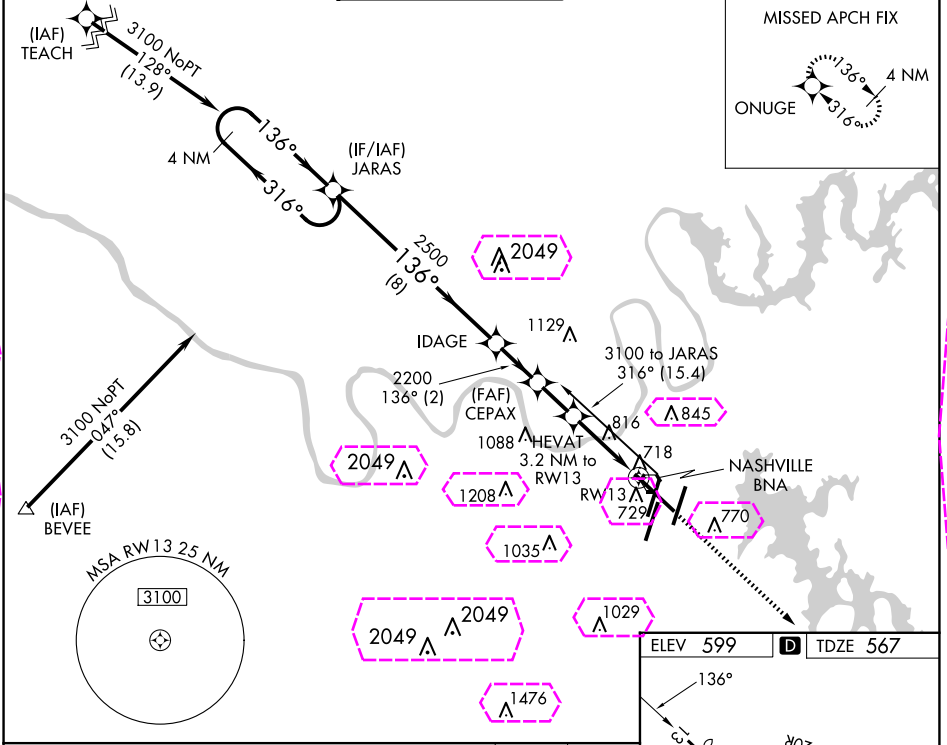
APP CRS	Rwy Ldg	9487
136°	TDZE	567
	Apt Elev	599

RNAV (GPS) RWY 13

NASHVILLE INTL (BNA)

RNP APCH.	For uncompensated Baro-VNAV systems, LNAV/VNAV NA below -16°C or above 47°C.	MISSED APPROACH: Climb to 3000 direct ONUGE and hold.
-----------	--	---

D-ATIS 135.1	NASHVILLE APP CON 118.4 360.7	NASHVILLE TOWER 118.6 257.8	GND CON 121.9 348.6	CLNC DEL 126.05	CPDLC
-----------------	----------------------------------	--------------------------------	------------------------	--------------------	-------



CATEGORY	A	B	C	D
LNAV/VNAV DA	968-1½ 401 (400-1½)			
LNAV MDA	1080-1	513 (500-1)	1080-1½	1080-1¾
			513 (500-1½)	513 (500-1¾)
CIRCLING	1100-1	1120-1	1200-1¾	1380-2½
	501 (600-1)	521 (600-1)	601 (700-1¾)	781 (800-2½)

NASHVILLE, TENNESSEE
Amdt 1B 16JUL20

36°07'N-86°41'W

NASHVILLE INTL (BNA)
RNAV (GPS) RWY 13

SE-1, 10 JUL 2025 to 07 AUG 2025

SE-1, 10 JUL 2025 to 07 AUG 2025

HIRL all Rwys
TDZ/CL Rwys 2L and 2R
REIL Rwys 13, 20C, and 31

APP CRS	Rwy Ldg	9487
136°	TDZE	567
	Apt Elev	599

RNAV (GPS) RWY 13
NASHVILLE INTL (BNA)

RNP APCH.



For uncompensated Baro-VNAV systems, LNAV/VNAV NA below -16°C or above 47°C.

MISSED APPROACH: Climb to 3000 direct ONUGE and hold.

D-ATIS
135.1

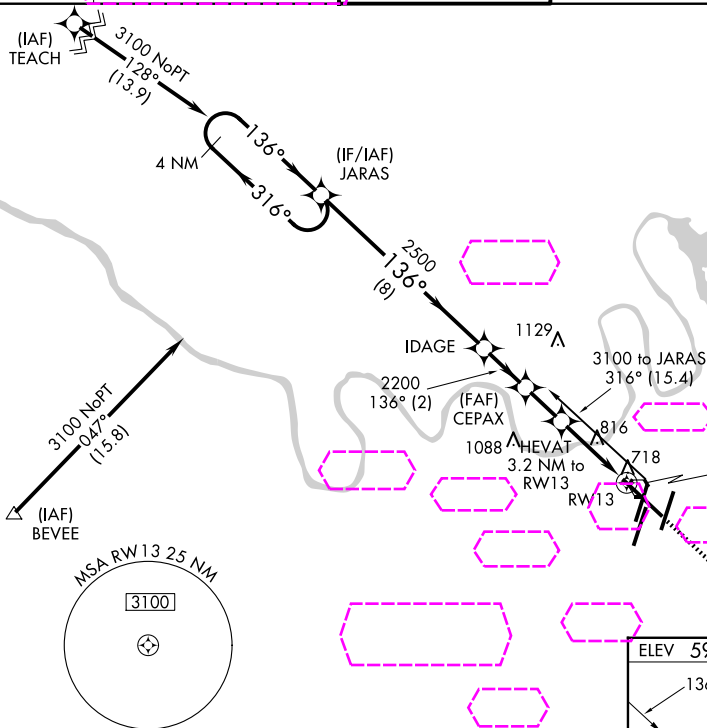
NASHVILLE APP CON
118.4 360.7 (030°-196°)
119.35 372.0 (197°-029°)

NASHVILLE TOWER
118.6 257.8

GND CON
121.9 348.6

CLNC DEL
126.05

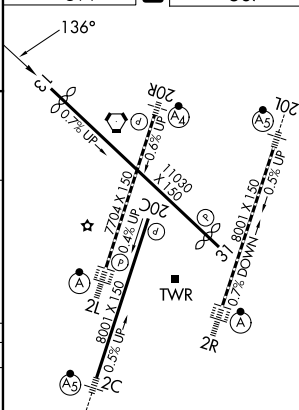
CPDLC



MISSED APCH FIX



ELEV 599	D	TDZE 567
----------	----------	----------



HIRL all Rwy's
TDZ/CL Rwy's 2L and 2R
REIL Rwy's 13, 20C, and 31

NASHVILLE, TENNESSEE
Amdt 1B 16JUL20

36°07'N-86°41'W

NASHVILLE INTL (BNA)
RNAV (GPS) RWY 13