

NASHVILLE, TENNESSEE

AL-282 (FAA)

25163

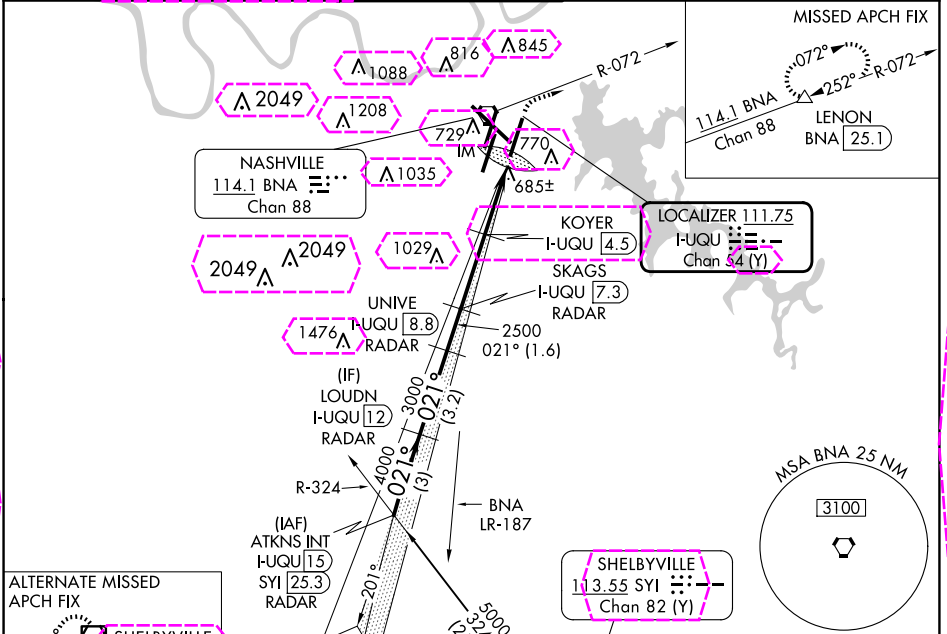
LOC/DME I-UQU <b>111.75</b> Chan <b>54</b> (Y)	APP CRS <b>021°</b>	Rwy Ldg <b>8000</b> TDZE <b>590</b> Apt Elev <b>599</b>
--	------------------------	---

# ILS or LOC/DME RWY 2R

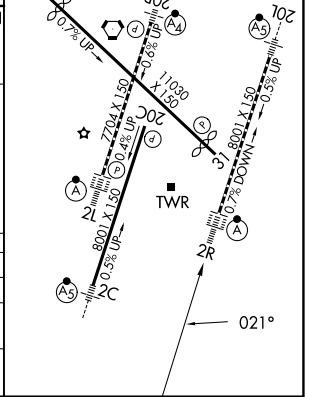
NASHVILLE INTL (BNA)

DME required.	ALSF-2	MISSED APPROACH: Climb to 1300 then climbing right turn to 3000 on BNA R-072 to LENON/BNA 25.1 DME and hold.
Simultaneous approach authorized with Rwy 2L/C. For inop ALSF, increase S-LOC 2R Cats C/D visibility to RVR 5500.		

D-ATIS <b>135.1</b>	NASHVILLE APP CON <b>118.4 360.7</b>	NASHVILLE TOWER <b>118.6 257.8</b>	GND CON <b>121.9 348.6</b>	CLNC DEL <b>126.05</b>	CPDLC
------------------------	---	---------------------------------------	-------------------------------	---------------------------	-------



ATKNS INT I-UQU [15] RADAR	LOUDN I-UQU [12] RADAR	UNIVE I-UQU [8.8] RADAR	SKAGS I-UQU [7.3] RADAR	KOYER I-UQU [4.5] RADAR	BNA R-072	LENON
5000-021°	4000	3000	2500	2500	1300	3000
GS 3.00° TCH 59						
3 NM	3.2 NM	1.6 NM	2.8 NM	2.1 NM	0.8 NM	0.1 NM
CATEGORY	A	B	C	D		
S-ILS 2R	790/18 200 (200-½)					
S-LOC 2R	940/24	350 (400-½)	940/30	350 (400-¾)		
CIRCLING	1100-1 501 (600-1)	1120-1 521 (600-1)	1200-1¾ 601 (700-1¾)	1380-2½ 781 (800-2½)		



NASHVILLE, TENNESSEE

Amdt 8C 16JUL20

36°07'N-86°41'W

NASHVILLE INTL (BNA)

# ILS or LOC/DME RWY 2R

NASHVILLE, TENNESSEE

AL-282 (FAA)

25219

LOC/DME I-UQU <b>111.75</b> Chan <b>54</b> (Y)	APP CRS <b>021°</b>	Rwy Ldg TDZE <b>590</b> Apt Elev <b>599</b>
--	------------------------	---

# ILS or LOC/DME RWY 2R

NASHVILLE INTL (BNA)

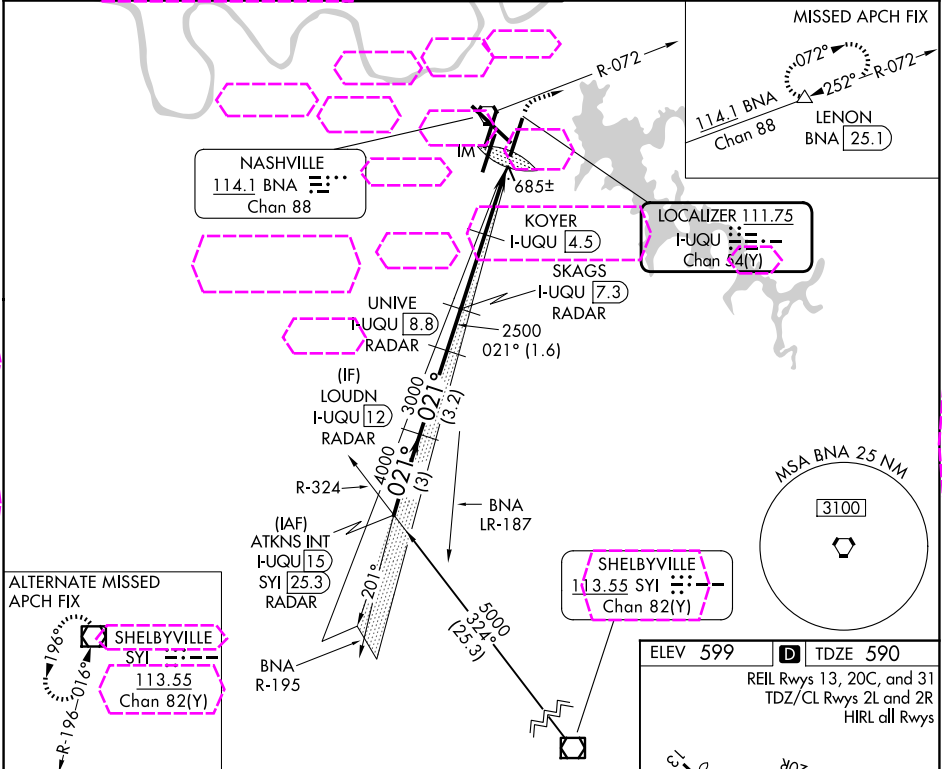
DME required.

Simultaneous approach authorized with Rwy 2L/C.  
For inop ALSF, increase S-LOC 2R Cats C/D visibility to RVR 5500.

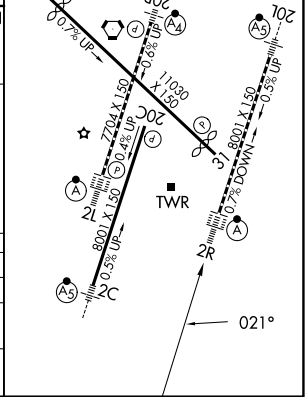
ALSF-2

MISSED APPROACH: Climb to 1300 then climbing right turn to 3000 on BNA R-072 to LENON/BNA 25.1 DME and hold.

D-ATIS <b>135.1</b>	NASHVILLE APP CON <b>118.4 360.7</b> (030°-196°) <b>119.35 372.0</b> (197°-029°)	NASHVILLE TOWER <b>118.6 257.8</b>	GND CON <b>121.9 348.6</b>	CLNC DEL <b>126.05</b>	CPDLC
------------------------	--	---------------------------------------	-------------------------------	---------------------------	-------



ATKNS INT I-UQU [15] RADAR	LOUDN I-UQU [12] RADAR	UNIVE I-UQU [8.8] RADAR	SKAGS I-UQU [7.3] RADAR	KOYER I-UQU [4.5] RADAR	LENON
5000	4000	3000	2500	2000	1300
GS 3.00° TCH 59					
3 NM	3.2 NM	1.6 NM	2.8 NM	2.1 NM	0.8 NM
CATEGORY	A	B	C	D	
S-ILS 2R	790/18	200 (200-½)			
S-LOC 2R	940/24	350 (400-½)	940/30	350 (400-¾)	
CIRCLING	1100-1 501 (600-1)	1120-1 521 (600-1)	1200-1¾ 601 (700-1¾)	1380-2½ 781 (800-2½)	



NASHVILLE, TENNESSEE  
Amdt 8C 16JUL20

36°07'N-86°41'W

# ILS or LOC/DME RWY 2R

SE-1, 07 AUG 2025 to 04 SEP 2025

SE-1, 07 AUG 2025 to 04 SEP 2025