

NASHVILLE, TENNESSEE

AL-282 (FAA)

25163

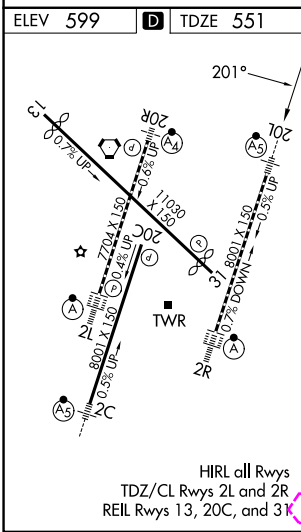
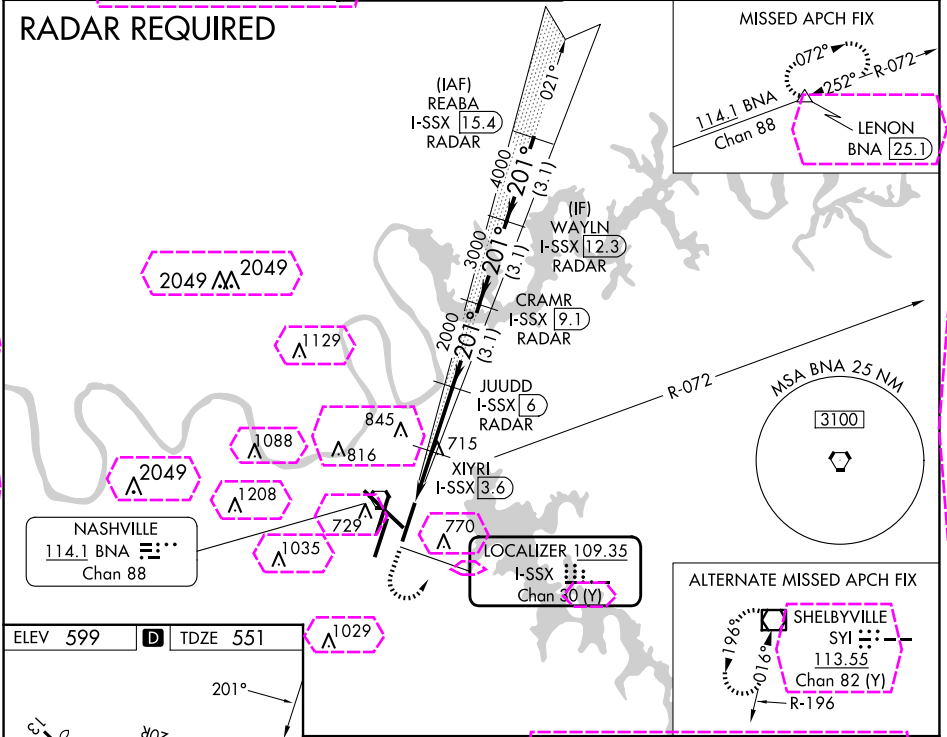
LOC/DME I-SSX 109.35 Chan 30 (Y)	APP CRS 201°	Rwy Ldg TDZE Apt Elev 8000 551 599
---	------------------------	--

ILS or LOC/DME RWY 20L

NASHVILLE INTL (BNA)

<p>Simultaneous approach authorized with Rwy 20R. DME required. **RVR 1800 authorized with the use of FD or AP or HUD to DA.</p>	<p>MALS</p> <p>MISSED APPROACH: Climb to 1300 then climbing left turn to 3000 on heading 040° and BNA VORTAC R-072 to LENON/BNA 25.1 DME and hold.</p>	<p>D-ATIS 135.1</p>	<p>NASHVILLE APP CON 118.4 360.7</p>	<p>NASHVILLE TOWER 118.6 257.8</p>	<p>GND CON 121.9 348.6</p>	<p>CLNC DEL 126.05</p>	<p>CPDLC</p>
---	--	---------------------------------------	--	--	--	--	---------------------

RADAR REQUIRED



1300	3000	BNA R-072	LENON	REABA I-SSX 15.4 RADAR
*LOC only.				
I-SSX 1.6	I-SSX 2.8	XIYRI I-SSX 3.6	JUDD I-SSX 6	CRAMR I-SSX 9.1
WAYLN I-SSX 12.3 RADAR				
201° 5000				
3000 4000				
GS 3.00° TCH 55				
1.2	0.8	2.4 NM	3.1 NM	3.1 NM
CATEGORY	A	B	C	D
S-ILS 20L	** 751/24 200 (200-½)			
S-LOC 20L	980/24	429 (400-½)	980/40	429 (400-¾)
CIRCLING	1100-1 501 (600-1)	1120-1 521 (600-1)	1200-1¾ 601 (700-1¾)	1380-2½ 781 (800-2½)

NASHVILLE, TENNESSEE
Amdt 6A 11 DEC14

36°07'N-86°41'W

ILS or LOC/DME RWY 20L

SE-1, 10 JUL 2025 to 07 AUG 2025

SE-1, 10 JUL 2025 to 07 AUG 2025

NASHVILLE, TENNESSEE

AL-282 (FAA)

25219

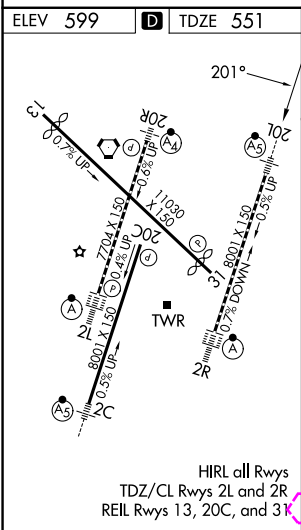
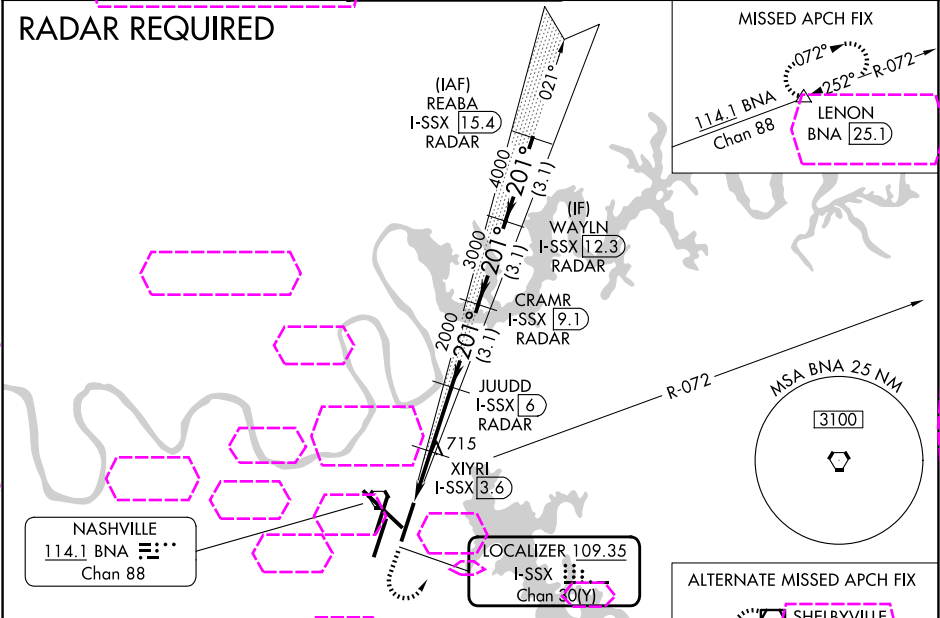
LOC/DME I-SSX 109.35 Chan 30 (Y)	APP CRS 201°	Rwy Ldg TDZE Apt Elev 8000 551 599
---	------------------------	--

ILS or LOC/DME RWY 20L

NASHVILLE INTL (BNA)

Simultaneous approach authorized with Rwy 20R. DME required. **RVR 1800 authorized with the use of FD or AP or HUD to DA.	MALSR 	MISSED APPROACH: Climb to 1300 then climbing left turn to 3000 on heading 040° and BNA VORTAC R-072 to LENON/BNA 25.1 DME and hold.
--	------------------	--

D-ATIS 135.1	NASHVILLE APP CON 118.4 360.7 (030°-196°) 119.35 372.0 (197°-029°)	NASHVILLE TOWER 118.6 257.8	GND CON 121.9 348.6	CLNC DEL 126.05	CPDLC
-------------------------------	---	--	--------------------------------------	----------------------------------	--------------



1300	3000	BNA R-072	LENON △	REABA I-SSX 15.4 RADAR
*LOC only.				
I-SSX 1.6	*I-SSX 2.8	XIYRI I-SSX 3.6	JUDD I-SSX 6 RADAR 2000	CRAMR I-SSX 9.1 RADAR
201° 5000				
4000				
3000				
2000				
1220* 2000				
CS 3.00° TCH 55				
1.2		0.8	2.4 NM	3.1 NM
3.1 NM		3.1 NM		
CATEGORY	A	B	C	D
S-ILS 20L	** 751/24 200 (200-½)			
S-LOC 20L	980/24	429 (400-½)	980/40	429 (400-¾)
CIRCLING	1100-1 501 (600-1)	1120-1 521 (600-1)	1200-1¾ 601 (700-1¾)	1380-2½ 781 (800-2½)

NASHVILLE, TENNESSEE
Amdt 6A 11DEC14

36°07'N-86°41'W

ILS or LOC/DME RWY 20L

NASHVILLE INTL (BNA)

SE-1, 07 AUG 2025 to 04 SEP 2025

SE-1, 07 AUG 2025 to 04 SEP 2025