

NASHVILLE, TENNESSEE

AL-282 (FAA)

25163

LOC I-PNO <b>111.95</b>	APP CRS <b>316°</b>	Rwy Ldg TDZE Apt Elev <b>9487</b> <b>578</b> <b>599</b>
----------------------------	------------------------	--

# ILS or LOC RWY 31

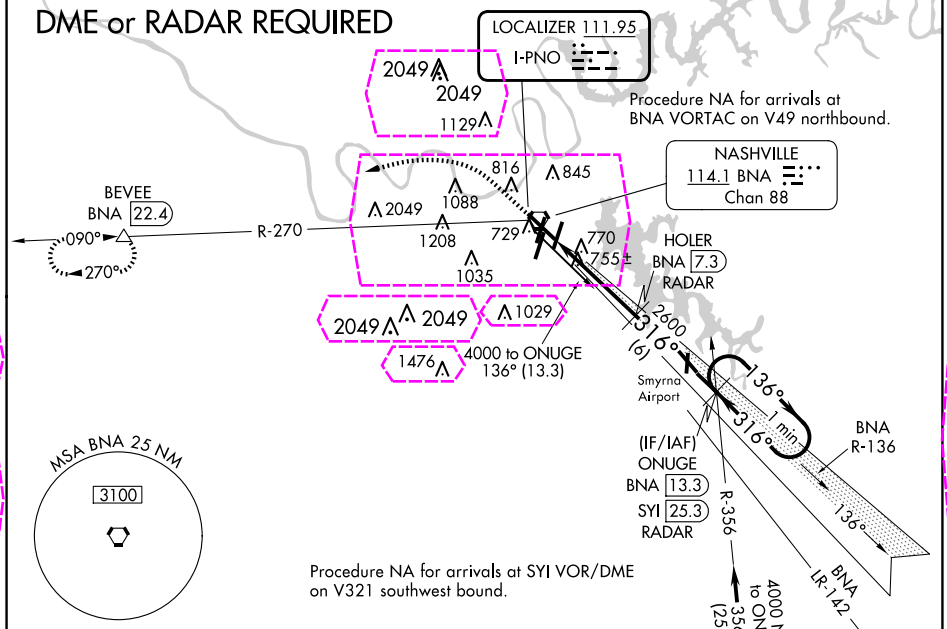
NASHVILLE INTL (BNA)

- ▼ DME or radar required.
- ▲ DME from BNA VORTAC.
- Simultaneous reception of I-PNO and BNA DME required.

MISSED APPROACH: Climb to 1400 then climbing left turn to 4000 on BNA VORTAC R-270 to BEVEE/BNA 22.4 DME and hold.

D-ATIS <b>135.1</b>	NASHVILLE APP CON <b>118.4 360.7</b>	NASHVILLE TOWER <b>118.6 257.8</b>	GND CON <b>121.9 348.6</b>	CLNC DEL <b>126.05</b>	CPDLC
------------------------	---	---------------------------------------	-------------------------------	---------------------------	-------

## DME or RADAR REQUIRED



ELEV 599	D	TDZE 578
HIRL all Rwy TDZ/CL Rwy 2L and 2R REIL Rwy 13, 20C, and 31		
FAF to MAP 6.2 NM		
Knots	60	90 120 150 180
Min:Sec	6:12	4:08 3:06 2:29 2:04

1400	4000	BEVEE	HOLER	ONUGE	One Minute Holding Pattern
BNA	BNA	△	BNA	BNA	
R-270	R-270		R-270	R-270	
* LOC only					
* BNA					
BNA					
2600					
316°					
136°					
4000					
GS 3.00° TCH 52					
1.2 NM 5 NM 6 NM					
CATEGORY	A	B	C	D	
S-ILS 31	778- <sup>3</sup> / <sub>4</sub> 200 (200- <sup>3</sup> / <sub>4</sub> )				
S-LOC 31	1020-1	442 (500-1)	1020-1 <sup>3</sup> / <sub>8</sub>	442 (500-1 <sup>3</sup> / <sub>8</sub> )	
CIRCLING	1100-1 501 (600-1)	1120-1 521 (600-1)	1200-1 <sup>3</sup> / <sub>4</sub> 601 (700-1 <sup>3</sup> / <sub>4</sub> )	1380-2 <sup>1</sup> / <sub>2</sub> 781 (800-2 <sup>1</sup> / <sub>2</sub> )	

NASHVILLE, TENNESSEE  
Amdt 10 27APR17

36°07'N-86°41'W

# NASHVILLE INTL (BNA)

## ILS or LOC RWY 31

NASHVILLE, TENNESSEE

AL-282 (FAA)

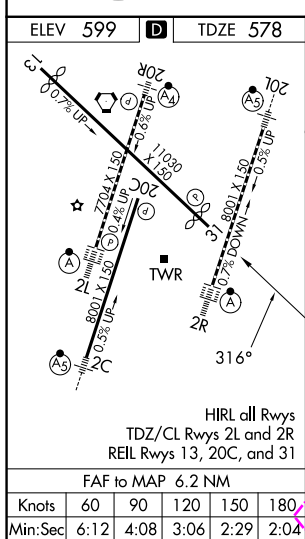
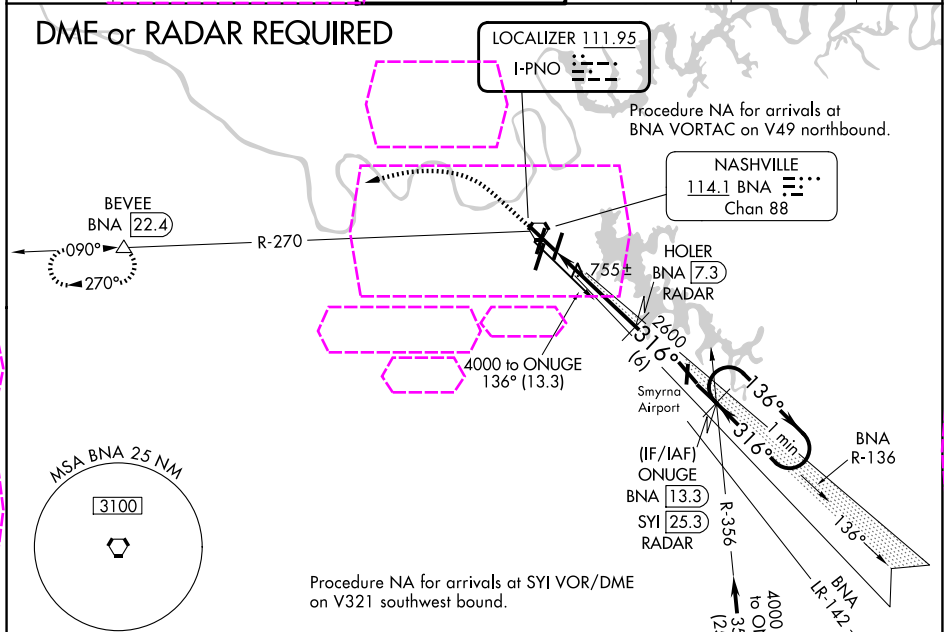
25219

LOC I-PNO <b>111.95</b>	APP CRS <b>316°</b>	Rwy Ldg TDZE Apt Elev <b>9487</b> <b>578</b> <b>599</b>
----------------------------	------------------------	--

# ILS or LOC RWY 31

NASHVILLE INTL (BNA)

<div>▼ DME or radar required.</div> <div>▲ DME from BNA VORTAC.</div> <div>Simultaneous reception of I-PNO and BNA DME required.</div>		MISSED APPROACH: Climb to 1400 then climbing left turn to 4000 on BNA VORTAC R-270 to BEVEE/BNA 22.4 DME and hold.			
D-ATIS 135.1	NASHVILLE APP CON 118.4 360.7 (030°-196°) 119.35 372.0 (197°-029°)	NASHVILLE TOWER 118.6 257.8	GND CON 121.9 348.6	CLNC DEL 126.05	CPDLC



1400	4000	BEVEE	HOLER BNA 7.3 RADAR	ONUGE BNA 13.3 RADAR	One Minute Holding Pattern
* LOC only	* BNA 2.4		2600	316°	4000
	BNA 1.2			2600	GS 3.00° TCH 52
	1.2 NM	5 NM	6 NM		
CATEGORY	A	B	C	D	
S-ILS 31	778- <sup>3</sup> / <sub>4</sub> 200 (200- <sup>3</sup> / <sub>4</sub> )				
S-LOC 31	1020-1	442 (500-1)	1020-1 <sup>3</sup> / <sub>8</sub>	442 (500-1 <sup>3</sup> / <sub>8</sub> )	
CIRCLING	1100-1 501 (600-1)	1120-1 521 (600-1)	1200-1 <sup>3</sup> / <sub>4</sub> 601 (700-1 <sup>3</sup> / <sub>4</sub> )	1380-2 <sup>1</sup> / <sub>2</sub> 781 (800-2 <sup>1</sup> / <sub>2</sub> )	

NASHVILLE, TENNESSEE  
Amdt 10 27APR17

36°07'N-86°41'W

# NASHVILLE INTL (BNA) ILS or LOC RWY 31

SE-1, 07 AUG 2025 to 04 SEP 2025

SE-1, 07 AUG 2025 to 04 SEP 2025