

NASHVILLE, TENNESSEE

AL-282 (FAA)

25163

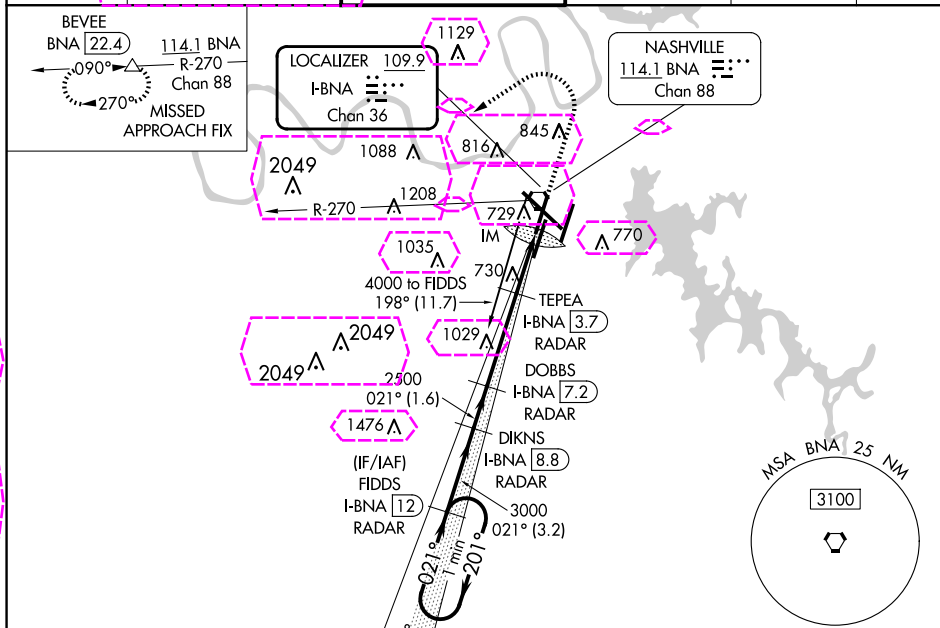
LOC/DME I-BNA 109.9 Chan 36	APP CRS 021°	Rwy Ldg TDZE Apt Elev 7702 599 599
---	------------------------	--

ILS or LOC RWY 2L

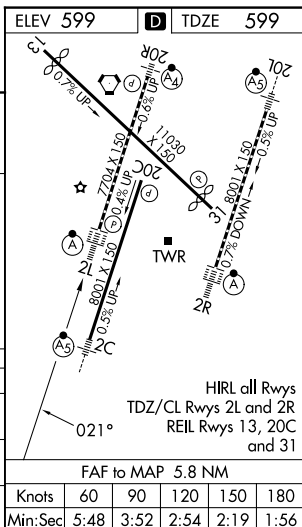
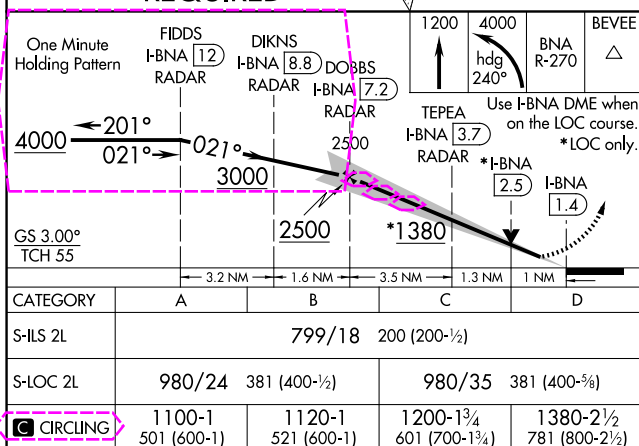
NASHVILLE INTL (BNA)

Simultaneous approach authorized with Rwy 2R. DME or radar required.	ALSIF-2 	MISSED APPROACH: Climb to 1200 then climbing left turn to 4000 on heading 240° and on BNA VORTAC R-270 to BEVEE/BNA VORTAC 22.4 DME and hold.
---	-------------	--

D-ATIS 135.1	NASHVILLE APP CON 118.4 360.7	NASHVILLE TOWER 118.6 257.8	GND CON 121.9 348.6	CLNC DEL 126.05	CPDLC
------------------------	---	---------------------------------------	-------------------------------	---------------------------	-------



DME or RADAR REQUIRED



NASHVILLE, TENNESSEE

Amdt 11 27APR17

36°07'N-86°41'W

NASHVILLE INTL (BNA)

ILS or LOC RWY 2L

NASHVILLE, TENNESSEE

AL-282 (FAA)

25219

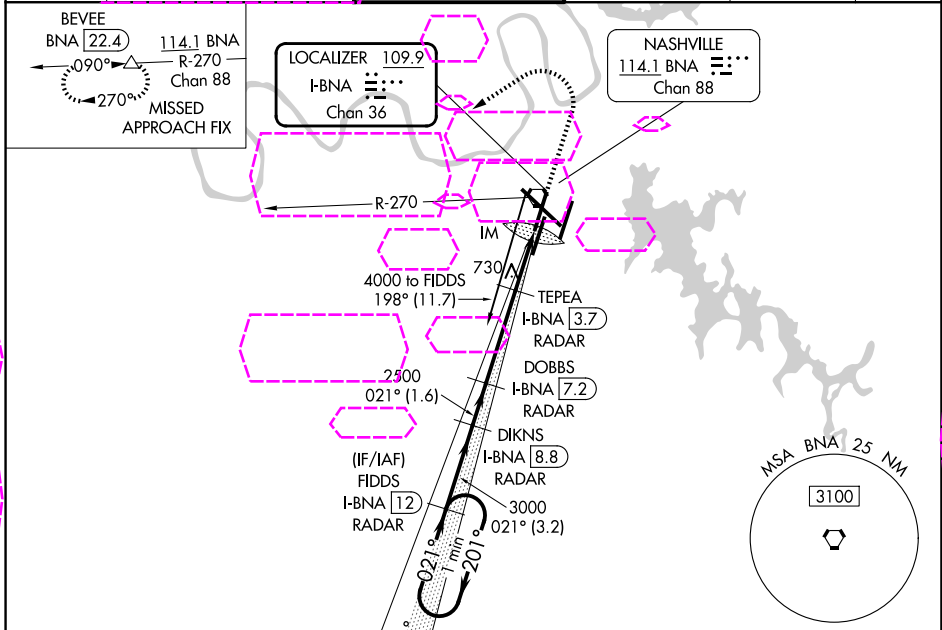
LOC/DME I-BNA 109.9 Chan 36	APP CRS 021°	Rwy Ldg TDZE Apt Elev	7702 599 599
---	------------------------	-----------------------------	---

ILS or LOC RWY 2L

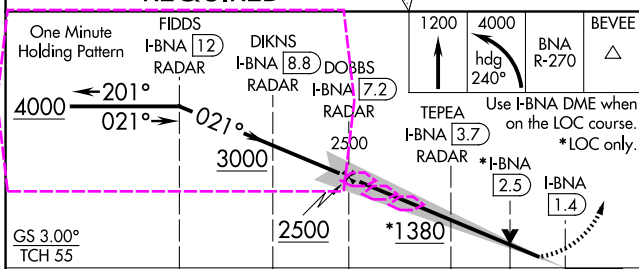
NASHVILLE INTL (BNA)

Simultaneous approach authorized with Rwy 2R. DME or radar required.	ALSIF-2 	MISSED APPROACH: Climb to 4000 then climbing left turn to 4000 on heading 240° and on BNA VORTAC R-270 to BEVEE/BNA VORTAC 22.4 DME and hold.
---	-------------	---

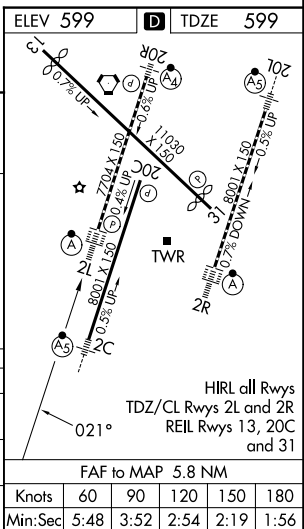
D-ATIS 135.1	NASHVILLE APP CON 118.4 360.7 (030°-196°) 119.35 372.0 (197°-029°)	NASHVILLE TOWER 118.6 257.8	GND CON 121.9 348.6	CLNC DEL 126.05	CPDLC
------------------------	--	---------------------------------------	-------------------------------	---------------------------	-------



DME or RADAR REQUIRED



CATEGORY	A	B	C	D
S-ILS 2L	799/18 200 (200-½)			
S-LOC 2L	980/24	381 (400-½)	980/35	381 (400-¾)
CIRCLING	1100-1 501 (600-1)	1120-1 521 (600-1)	1200-1¾ 601 (700-1¾)	1380-2½ 781 (800-2½)



NASHVILLE, TENNESSEE

Amdt 11 27APR17

36°07'N-86°41'W

NASHVILLE INTL (BNA)

ILS or LOC RWY 2L

SE-1, 07 AUG 2025 to 04 SEP 2025

SE-1, 07 AUG 2025 to 04 SEP 2025