



NASHVILLE, TENNESSEE

AL-282 (FAA)

25219

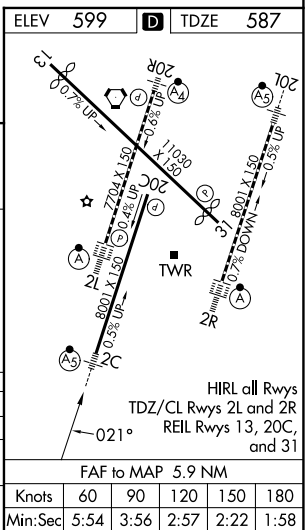
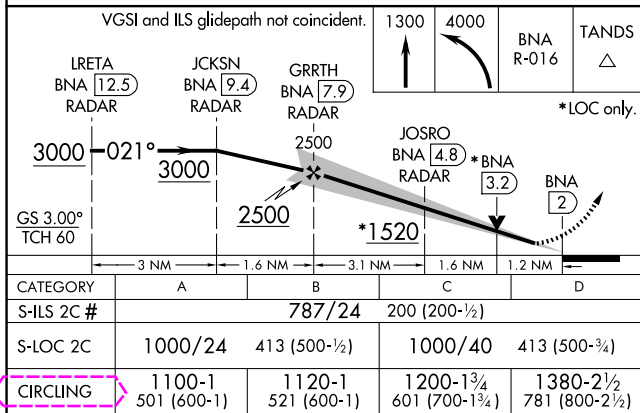
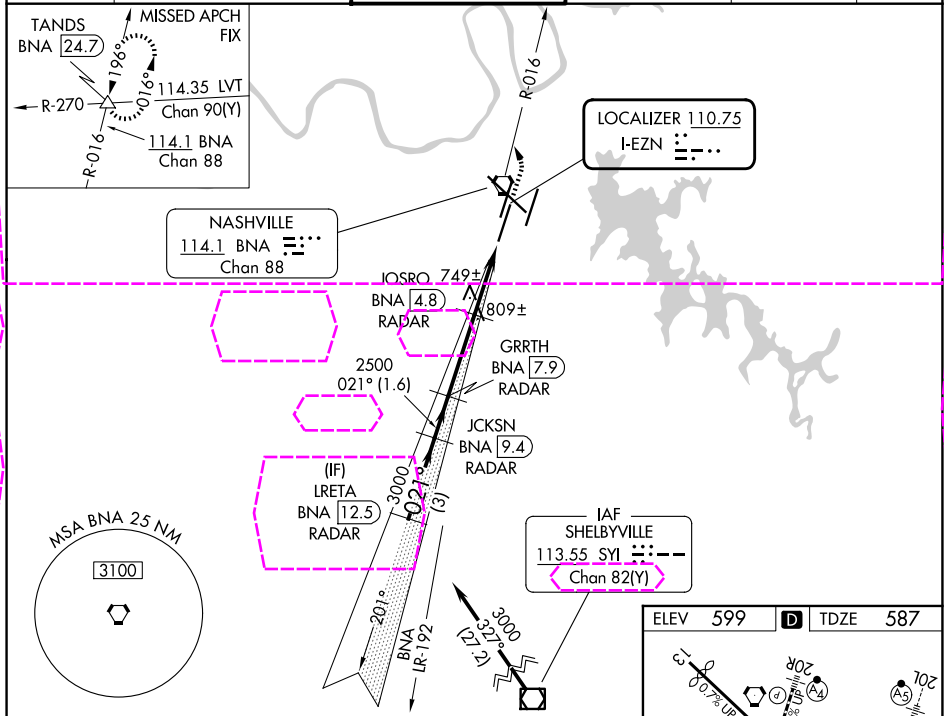
LOC I-EZN <b>110.75</b>	APP CRS <b>021°</b>	Rwy Ldg TDZE Apt Elev	<b>7601</b> <b>587</b> <b>599</b>
----------------------------	------------------------	-----------------------------	---

# ILS or LOC RWY 2C

NASHVILLE INTL (BNA)

DME or RADAR required.	MALSR 	MISSED APPROACH: Climb to 1300 then dimbling left turn to 4000 on BNA VORTAC R-016 to TANDS INT/BNA 24.7 and hold.
Simultaneous approach authorized. For inop ALS, increase S-LOC 2C Cats C and D visibility to RVR 6000. DME from BNA VORTAC. Simultaneous reception of I-EZN and BNA DME required. # RVR 1800 authorized with the use of FD or AP or HUD to DA.		

D-ATIS <b>135.1</b>	NASHVILLE APP CON <b>118.4 360.7</b> (030°-196°) <b>119.35 372.0</b> (197°-029°)	NASHVILLE TOWER <b>118.6 257.8</b>	GND CON <b>121.9 348.6</b>	CLNC DEL <b>126.05</b>	CPDLC
------------------------	--	---------------------------------------	-------------------------------	---------------------------	-------



NASHVILLE, TENNESSEE  
Amdt 2B 07OCT21

36°07'N-86°41'W

# NASHVILLE INTL (BNA)

## ILS or LOC RWY 2C

SE-1, 07 AUG 2025 to 04 SEP 2025

SE-1, 07 AUG 2025 to 04 SEP 2025