

NASHVILLE, TENNESSEE

AL-282 (FAA)

25163

LOC I-VIY <u>111.3</u>	APP CRS <b>201°</b>		20R	20C
		Rwy Ldg	<b>7702</b>	<b>8001</b>
		TDZE	<b>578</b>	<b>588</b>
		Apt Elev	<b>599</b>	<b>599</b>

# ILS or LOC RWY 20R

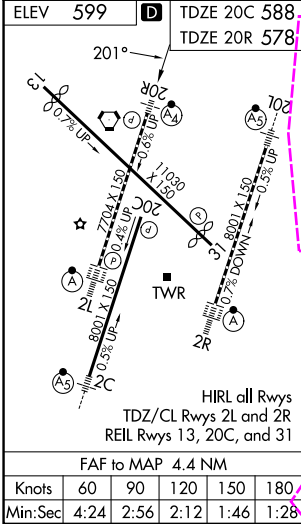
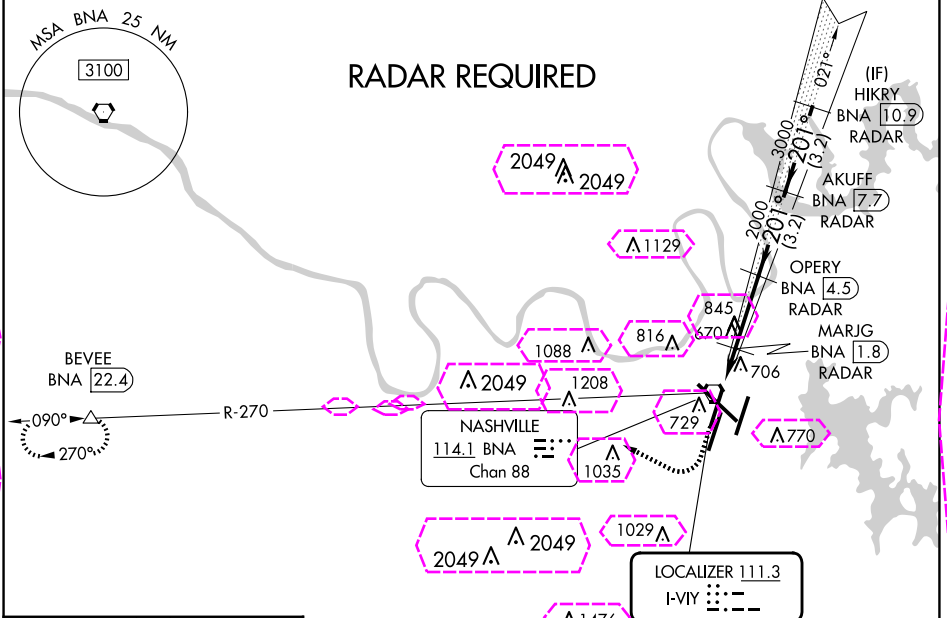
NASHVILLE INTL (BNA)

**Simultaneous approach authorized with Rwy 20L. DME or radar required. For inop ALS, increase S-LOC 20R Cat D visibility to 1¼ SM. DME from BNA VORTAC. Simultaneous reception of I-VIY and BNA DME required.**

**MALSF**

**MISSED APPROACH:** Climb to 1200 then climbing right turn to 4000 on heading 300° and on BNA VORTAC R-270 to BEVEE/BNA 22.4 DME and hold.

D-ATIS <b>135.1</b>	NASHVILLE APP CON <b>118.4 360.7</b>	NASHVILLE TOWER <b>118.6 257.8</b>	GND CON <b>121.9 348.6</b>	CLNC DEL <b>126.05</b>	CPDLC
------------------------	---	---------------------------------------	-------------------------------	---------------------------	-------



*LOC only				
HIRL all Rwys TDZ/CL Rwys 2L and 2R REIL Rwys 13, 20C, and 31				
FAF to MAP 4.4 NM				
Knots	60	90	120	150 180
Min:Sec	4:24	2:56	2:12	1:46 1:28
CIRCLING	1100-1 501 (600-1)	1120-1 521 (600-1)	1200-1¾ 601 (700-1¾)	1380-2½ 781 (800-2½)

NASHVILLE, TENNESSEE  
Amdt 11 27APR17

36°07'N-86°41'W

NASHVILLE INTL (BNA)  
**ILS or LOC RWY 20R**

SE-1, 10 JUL 2025 to 07 AUG 2025

SE-1, 10 JUL 2025 to 07 AUG 2025

LOC I-VIY	APP CRS	Rwy Ldg	20R <b>7702</b>	20C <b>8001</b>
<b><u>111.3</u></b>	<b>201°</b>	TDZE	<b>578</b>	<b>588</b>
		Apt Elev	<b>599</b>	<b>599</b>

ILS or LOC RWY 20R  
NASHVILLE INTL (BNA)

**T** Simultaneous approach authorized with Rwy 20L. DME or  
**A** radar required. For inop ALS, increase S-LOC 20R  
Cat D visibility to 1¼ SM. DME from BNA VORTAC.  
Simultaneous reception of I-VII and BNA DME required.

MALSF

**MISSED APPROACH:** Climb to 1200 then climbing right turn to 4000 on heading 300° and on BNA VORTAC R-270 to BEVEE/BNA 22.4 DME and hold.

D-ATIS  
135.1

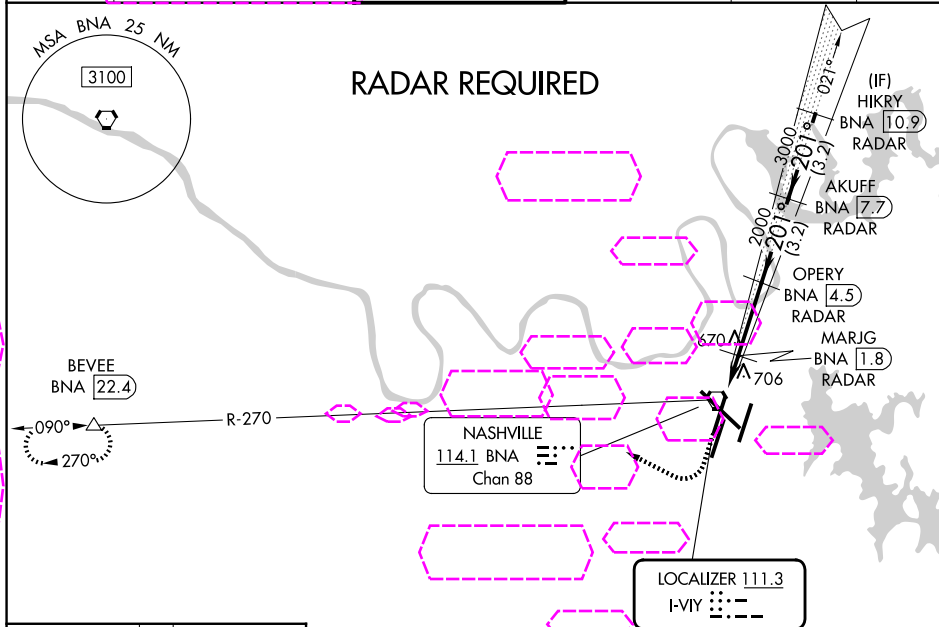
NASHVILLE APP CON  
118.4 360.7 (030°-196°)  
119.35 372.0 (197°-029°)

NASHVILLE TOWER  
118.6 257.8

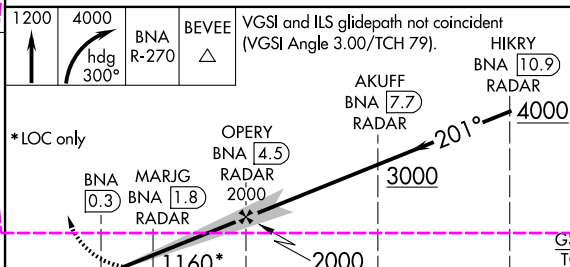
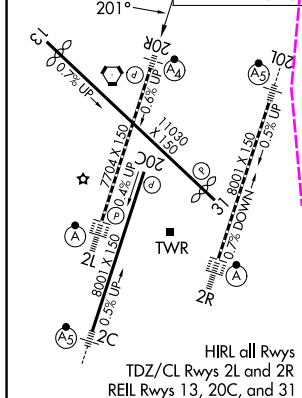
GND CON  
**121.9 348.6**

CLNC DEL  
**126.05**

CPDLC



ELEV 599	<b>D</b>	TDZE 20C 588
		TDZE 20R 578



	1.7 NM	2.7 NM	3.2 NM	3.2 NM	
CATEGORY	A	B	C	D	
S-LS 20R	778/40 200 (200-¾)				
S-LOC 20R	1000/40	422 (500-¾)	1000/50	422 (500-1)	
SIDESTEP 20C	1000-1	412 (500-1)	1000-1½ 412 (500-1½)	1000-2 412 (500-2)	
CIRCLING	1100-1 501 (600-1)	1120-1 521 (600-1)	1200-1¾ 601 (700-1¾)	1380-2½ 781 (800-2½)	

NASHVILLE, TENNESSEE  
Amdt 11 27APR17

36°07'N-86°41'W

NASHVILLE INTL (BNA)  
ILS or LOC RWY 20R

SE-1, 07 AUG 2025 to 04 SEP 2025

SE-1, 07 AUG 2025 to 04 SEP 2025