

NASHVILLE, TENNESSEE

AL-282 (FAA)

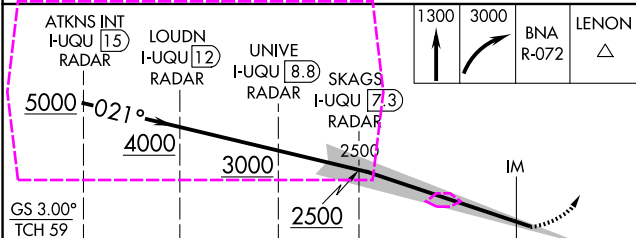
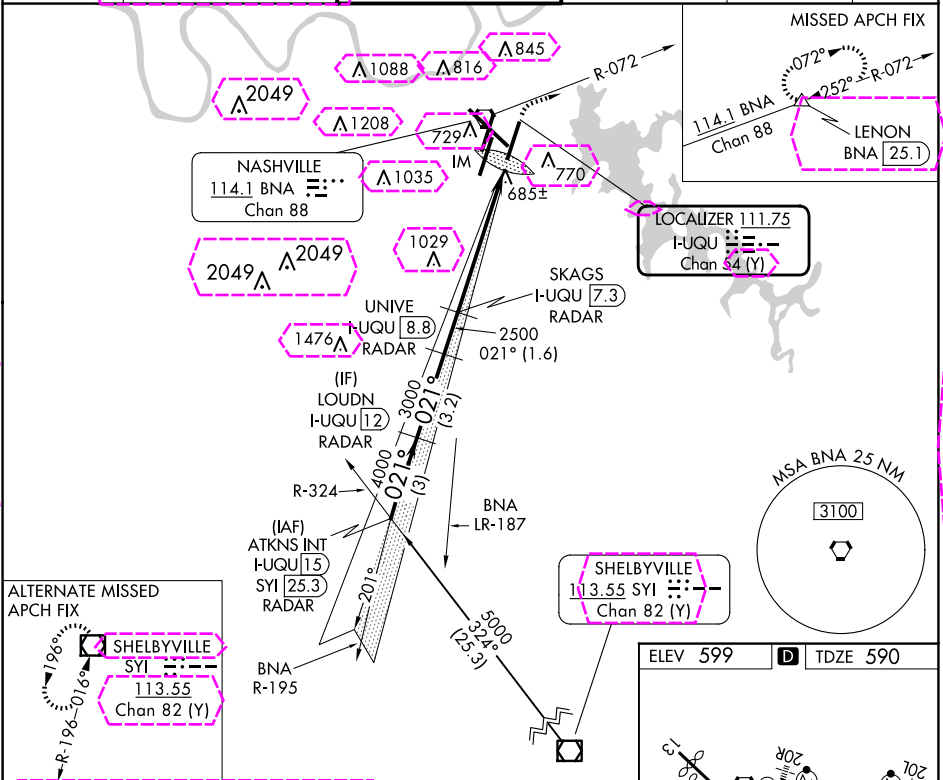
25163

LOC/DME I-UQU 111.75 Chan 54 (Y)	APP CRS 021°	Rwy Ldg TDZE 590 Apt Elev 599
--	------------------------	---

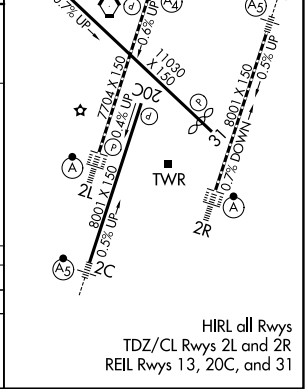
ILS RWY 2R (SA CAT I)
NASHVILLE INTL (BNA)

DME required.	ALSIF-2	MISSED APPROACH: Climb to 1300 then climbing right turn to 3000 on BNA R-072 to LENON/BNA 25.1 DME and hold.
Simultaneous approach authorized with Rwy 2L/C. Requires specific OPSPEC, MSPEC, or LOA approval and use of HUD to DA.		

D-ATIS 135.1	NASHVILLE APP CON 118.4 360.7	NASHVILLE TOWER 118.6 257.8	GND CON 121.9 348.6	CLNC DEL 126.05	CPDLC
------------------------	---	---------------------------------------	-------------------------------	---------------------------	-------



CATEGORY	A	B	C	D
S-ILS 2R	RA 121/14	150	DA 740	
SA CATEGORY I ILS - SPECIAL AIRCREW & AIRCRAFT CERTIFICATION REQUIRED				



NASHVILLE, TENNESSEE
Amdt 8C 16JUL20

36°07'N-86°41'W

NASHVILLE INTL (BNA)
ILS RWY 2R (SA CAT I)

SE-1, 10 JUL 2025 to 07 AUG 2025

SE-1, 10 JUL 2025 to 07 AUG 2025

NASHVILLE, TENNESSEE

AL-282 (FAA)

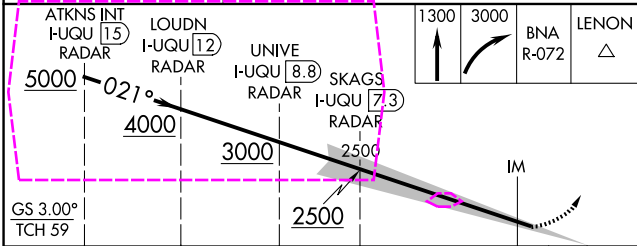
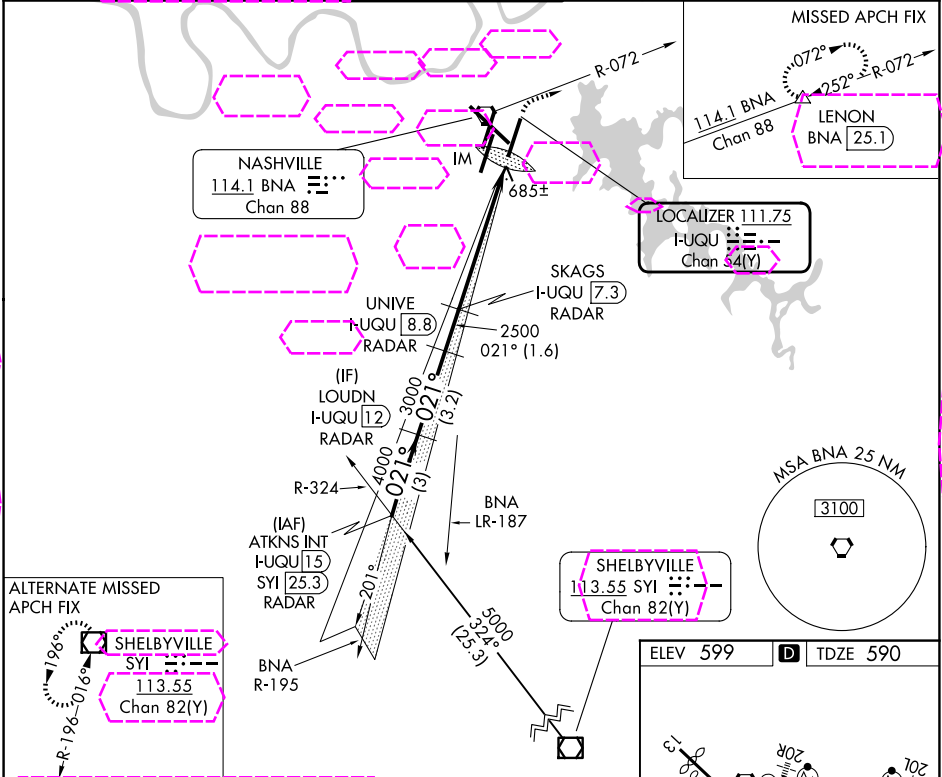
25219

LOC/DME I-UQU 111.75 Chan 54 (Y)	APP CRS 021°	Rwy Ldg TDZE 590 Apt Elev 599
--	------------------------	---

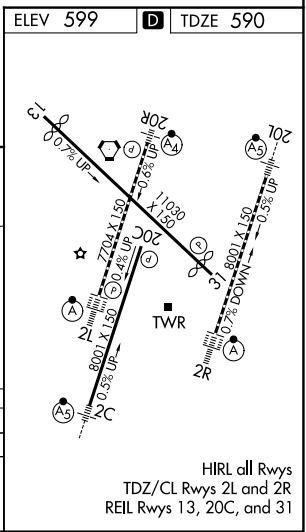
ILS RWY 2R (SA CAT I)
NASHVILLE INTL (BNA)

DME required.	ALSF-2	MISSED APPROACH: Climb to 1300 then climbing right turn to 3000 on BNA R-072 to LENON/BNA 25.1 DME and hold.
Simultaneous approach authorized with Rwy 2L/C. Requires specific OPSPEC, MSPEC, or LOA approval and use of HUD to DA.		

D-ATIS 135.1	NASHVILLE APP CON 118.4 360.7 (030°-196°) 119.35 372.0 (197°-029°)	NASHVILLE TOWER 118.6 257.8	GND CON 121.9 348.6	CLNC DEL 126.05	CPDLC
------------------------	--	---------------------------------------	-------------------------------	---------------------------	-------



CATEGORY	A	B	C	D
S-ILS 2R	RA 121/14	150	DA 740	
SA CATEGORY I ILS - SPECIAL AIRCREW & AIRCRAFT CERTIFICATION REQUIRED				



NASHVILLE, TENNESSEE
Amdt 8C 16JUL20

36°07'N-86°41'W

NASHVILLE INTL (BNA)
ILS RWY 2R (SA CAT I)

SE-1, 07 AUG 2025 to 04 SEP 2025

SE-1, 07 AUG 2025 to 04 SEP 2025

HIRL all Rwy's
TDZ/CL Rwy's 2L and 2R
REIL Rwy's 13, 20C, and 31