

NASHVILLE, TENNESSEE

AL-282 (FAA)

25163

LOC/DME I-UQU 111.75 Chan 54 (Y)	APP CRS 021°	Rwy Ldg TDZE 590 Apt Elev 599
--	------------------------	---

ILS RWY 2R (CAT II & III)

NASHVILLE INTL (BNA)

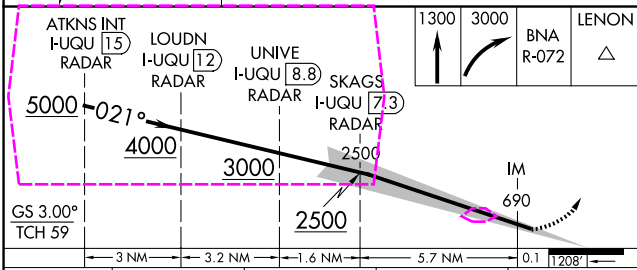
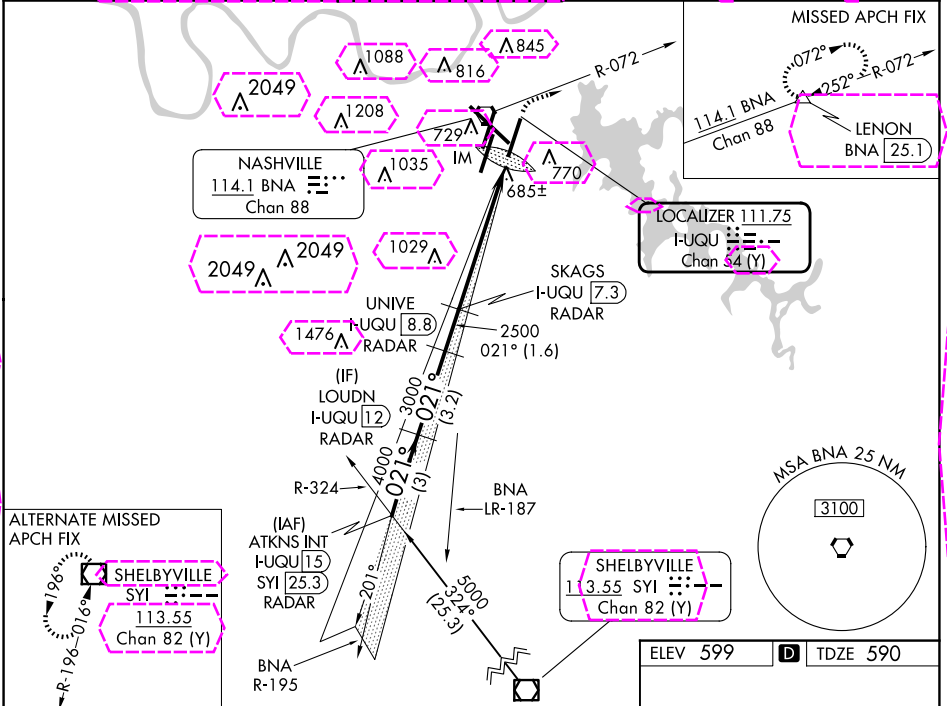
DME required.

Simultaneous approach authorized with Rwy 2L/C.

ALSf-2

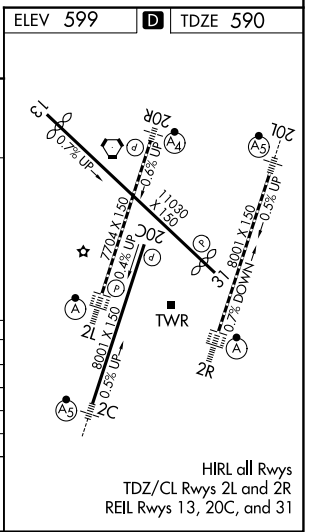
MISSED APPROACH: Climb to 1300 then climbing right turn to 3000 on BNA R-072 to LENON/BNA 25.1 DME and hold.

D-ATIS 135.1	NASHVILLE APP CON 118.4 360.7	NASHVILLE TOWER 118.6 257.8	GND CON 121.9 348.6	CLNC DEL 126.05	CPDLC
------------------------	---	---------------------------------------	-------------------------------	---------------------------	-------



CATEGORY	A	B	C	D
S-ILS 2R	CAT II	RA 116/12	100	DA 690
S-ILS 2R		CAT IIIa	RVR 07	
S-ILS 2R		CAT IIIb	RVR 06	
S-ILS 2R		CAT IIIc	NA	

CATEGORY II & III ILS - SPECIAL AIRCREW & AIRCRAFT CERTIFICATION REQUIRED



NASHVILLE, TENNESSEE
Amdt 8C 16JUL20

36°07'N-86°41'W

NASHVILLE INTL (BNA)
ILS RWY 2R (CAT II & III)

HIRL all Rwy's
TDZ/CL Rwy's 2L and 2R
REIL Rwy's 13, 20C, and 31

SE-1, 10 JUL 2025 to 07 AUG 2025

SE-1, 10 JUL 2025 to 07 AUG 2025

NASHVILLE, TENNESSEE

AL-282 (FAA)

25219

LOC/DME I-UQU 111.75 Chan 54 (Y)	APP CRS 021°	Rwy Ldg TDZE 590 Apt Elev 599
--	------------------------	---

ILS RWY 2R (CAT II & III)

NASHVILLE INTL (BNA)

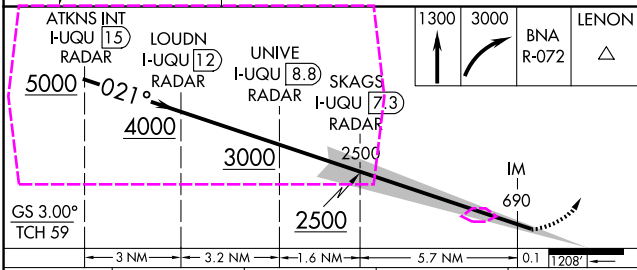
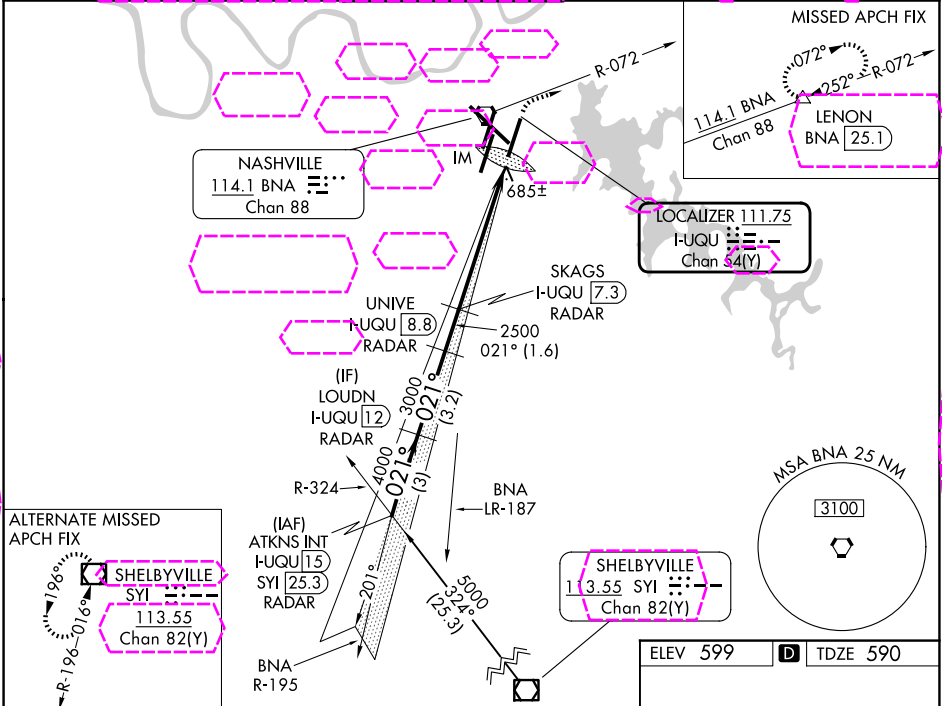
DME required.

Simultaneous approach authorized with Rwy 2L/C.

ALSf-2

MISSED APPROACH: Climb to 1300 then climbing right turn to 3000 on BNA R-072 to LENON/BNA 25.1 DME and hold.

D-ATIS 135.1	NASHVILLE APP CON 118.4 360.7 (030°-196°) 119.35 372.0 (197°-029°)	NASHVILLE TOWER 118.6 257.8	GND CON 121.9 348.6	CLNC DEL 126.05	CPDLC
------------------------	--	---------------------------------------	-------------------------------	---------------------------	-------

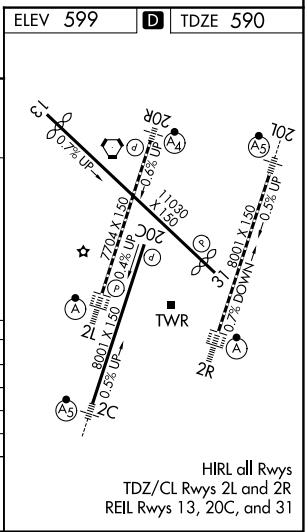


CATEGORY	A	B	C	D
S-ILS 2R	CAT II	RA 116/12	100 DA 690	
S-ILS 2R		CAT IIIa	RVR 07	
S-ILS 2R		CAT IIIb	RVR 06	
S-ILS 2R		CAT IIIc	NA	

CATEGORY II & III ILS - SPECIAL AIRCREW & AIRCRAFT CERTIFICATION REQUIRED

NASHVILLE, TENNESSEE
Amdt 8C 16JUL20

36°07'N-86°41'W



HIRL all Rwy's
TDZ/CL Rwy's 2L and 2R
REIL Rwy's 13, 20C, and 31

ILS RWY 2R (CAT II & III)

SE-1, 07 AUG 2025 to 04 SEP 2025

SE-1, 07 AUG 2025 to 04 SEP 2025