

NASHVILLE, TENNESSEE

AL-282 (FAA)

25163

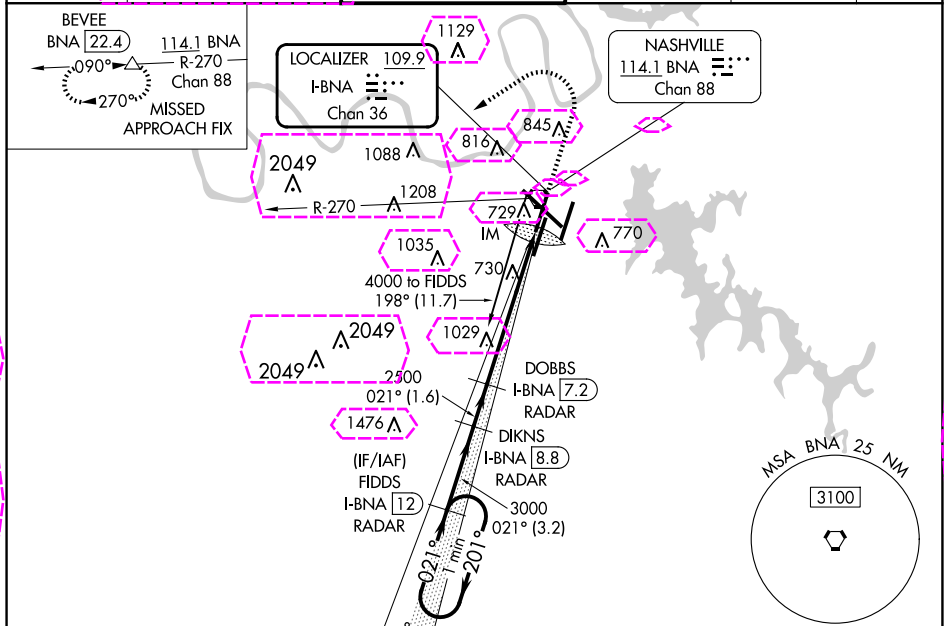
LOC/DME I-BNA 109.9 Chan 36	APP CRS 021°	Rwy Ldg TDZE Apt Elev 7702 599 599
---	------------------------	--

ILS RWY 2L (SA CAT I)

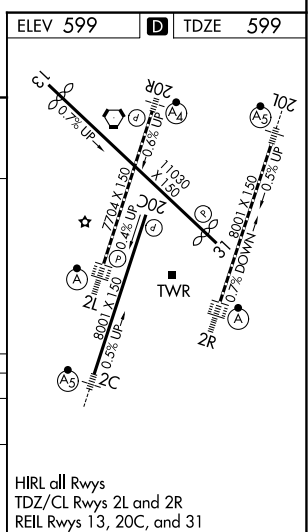
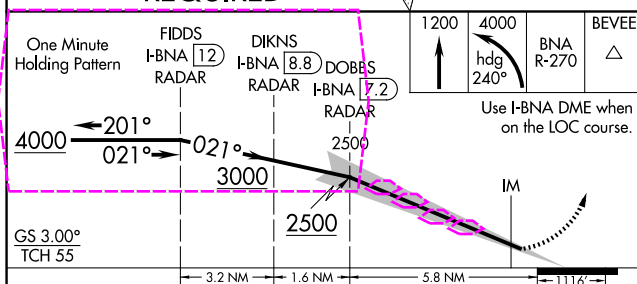
NASHVILLE INTL (BNA)

Simultaneous approach authorized with Rwy 2R. DME or radar required. Requires specific OPSPEC, MSPEC, or LOA approval and use of HUD to DH.	ALSF-2	MISSED APPROACH: Climb to 1200 then climbing left turn to 4000 on heading 240° and on BNA VORTAC R-270 to BEVEE/BNA 22.4 DME and hold.
--	--------	--

D-ATIS 135.1	NASHVILLE APP CON 118.4 360.7	NASHVILLE TOWER 118.6 257.8	GND CON 121.9 348.6	CLNC DEL 126.05	CPDLC
------------------------	---	---------------------------------------	-------------------------------	---------------------------	-------



DME or RADAR REQUIRED



SA CATEGORY I ILS - SPECIAL AIRCREW & AIRCRAFT CERTIFICATION REQUIRED

NASHVILLE, TENNESSEE
Amdt 11 27APR17

36°07'N-86°41'W

NASHVILLE INTL (BNA)
ILS RWY 2L (SA CAT I)

SE-1, 07 AUG 2025 to 04 SEP 2025