

NASHVILLE, TENNESSEE

AL-282 (FAA)

25219

LOC/DME I-BNA 109.9 Chan 36	APP CRS 021°	Rwy Ldg 7702 TDZE 599 Apt Elev 599
---	------------------------	---

ILS RWY 2L (CAT II & III)

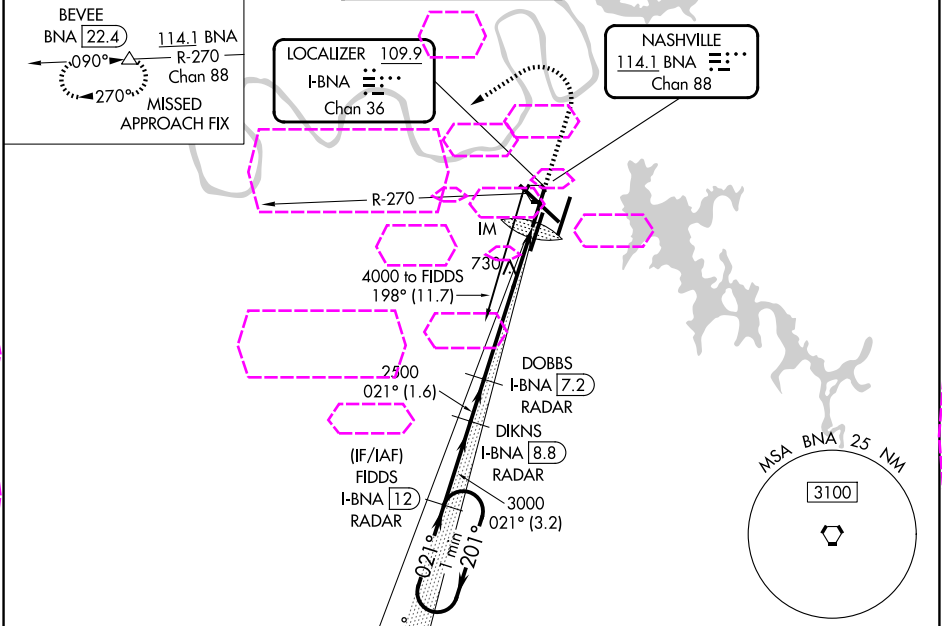
NASHVILLE INTL (BNA)

Simultaneous approach authorized with Rwy 2R.
DME or radar required. Cat II: RVR 1000 authorized with specific OPSPEC, MSPEC, or LOA approval and use of Autoland or HUD to touchdown.

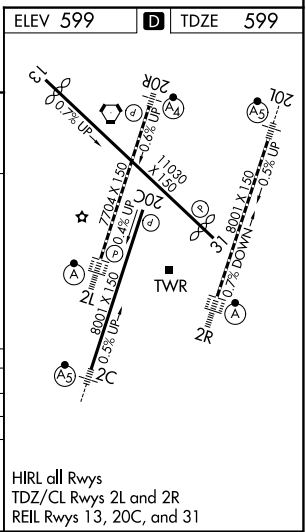
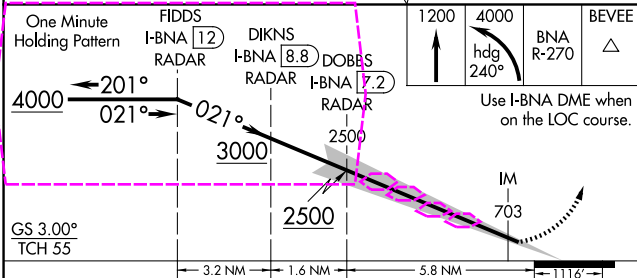
ALSF-2

MISSED APPROACH: Climb to 1200 then climbing left turn to 4000 on heading 240° and on BNA VORTAC R-270 to BEVEE/BNA 22.4 DME and hold.

D-ATIS 135.1	NASHVILLE APP CON 118.4 360.7 (030°-196°) 119.35 372.0 (197°-029°)	NASHVILLE TOWER 118.6 257.8	GND CON 121.9 348.6	CLNC DEL 126.05	CPDLC
------------------------	--	---------------------------------------	-------------------------------	---------------------------	-------



DME or RADAR REQUIRED



CATEGORY	A	B	C	D
S-ILS 2L	CAT II RA 104/12 100 DA 699			
S-ILS 2L	CAT III RVR 600			

CATEGORY II & III ILS - SPECIAL AIRCREW & AIRCRAFT CERTIFICATION REQUIRED

NASHVILLE, TENNESSEE
Amdt 11 27APR17

36°07'N-86°41'W

NASHVILLE INTL (BNA)
ILS RWY 2L (CAT II & III)

SE-1, 07 AUG 2025 to 04 SEP 2025

SE-1, 07 AUG 2025 to 04 SEP 2025