

MYRTLE BEACH, SOUTH CAROLINA


AL-280 (FAA)

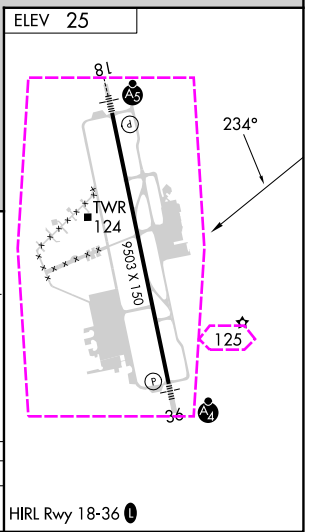
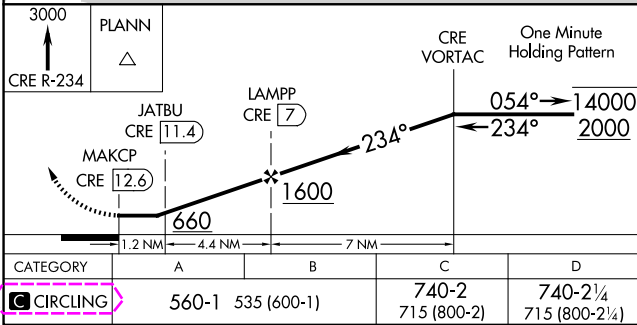
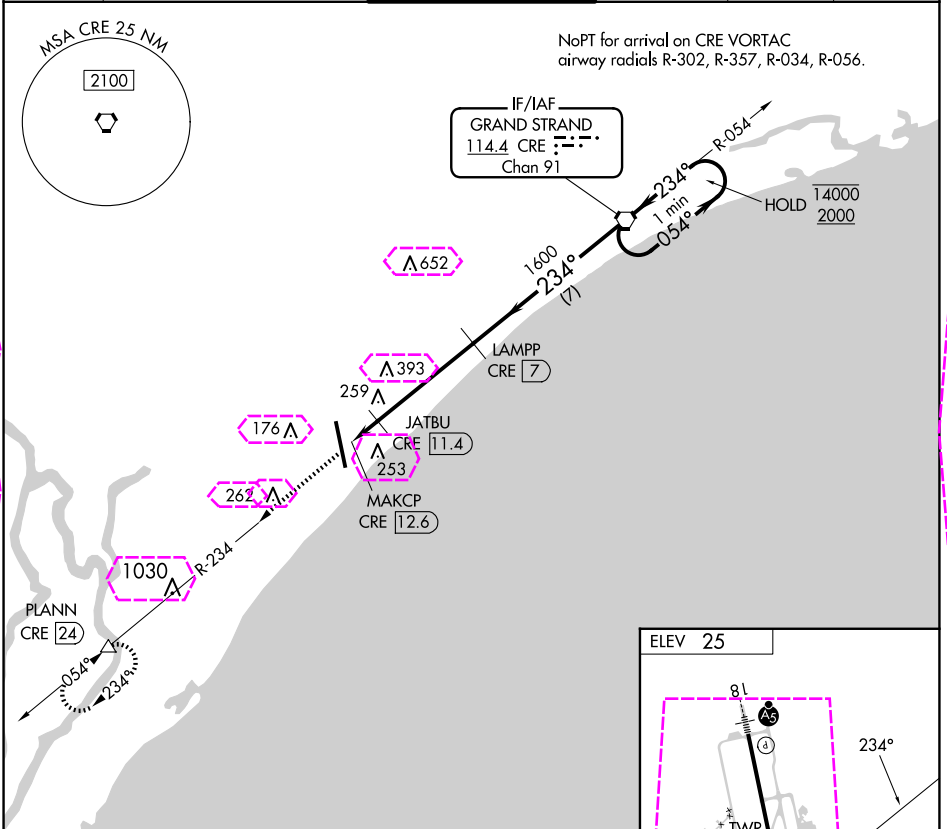
23222

VORTAC CRE <b>114.4</b> Chan <b>91</b>	APP CRS <b>234°</b>	Rwy Idg TDZE Apt Elev	<b>N/A</b> <b>N/A</b> <b>25</b>
--	------------------------	-----------------------------	---------------------------------------

VOR-A

MYRTLE BEACH INTL (MYR)

DME required. 		MISSED APPROACH: Climb to 3000 on CRE VORTAC R-234 to PLANN/24 DME and hold, continue climb-in-hold to 3000.			
ATIS <b>123.925</b>	MYRTLE BEACH APP CON ★ (171° - 321°) <b>127.4 257.95</b> (322° - 170°) <b>119.2 350.3</b>	MYRTLE BEACH TOWER ★ <b>128.45</b> (CTAF) <b>0 259.3</b>	GND CON <b>120.3 275.8</b>	CLNC DEL <b>120.3</b>	UNICOM <b>122.95</b>



MYRTLE BEACH, SOUTH CAROLINA


AL-280 (FAA)

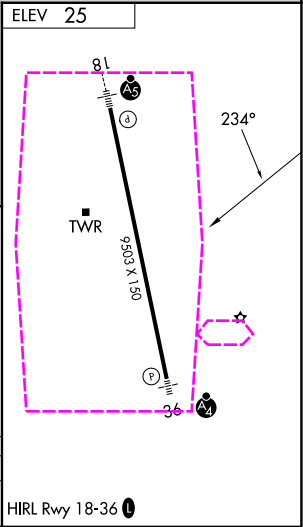
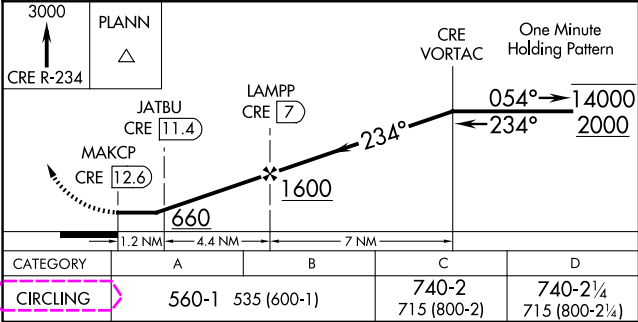
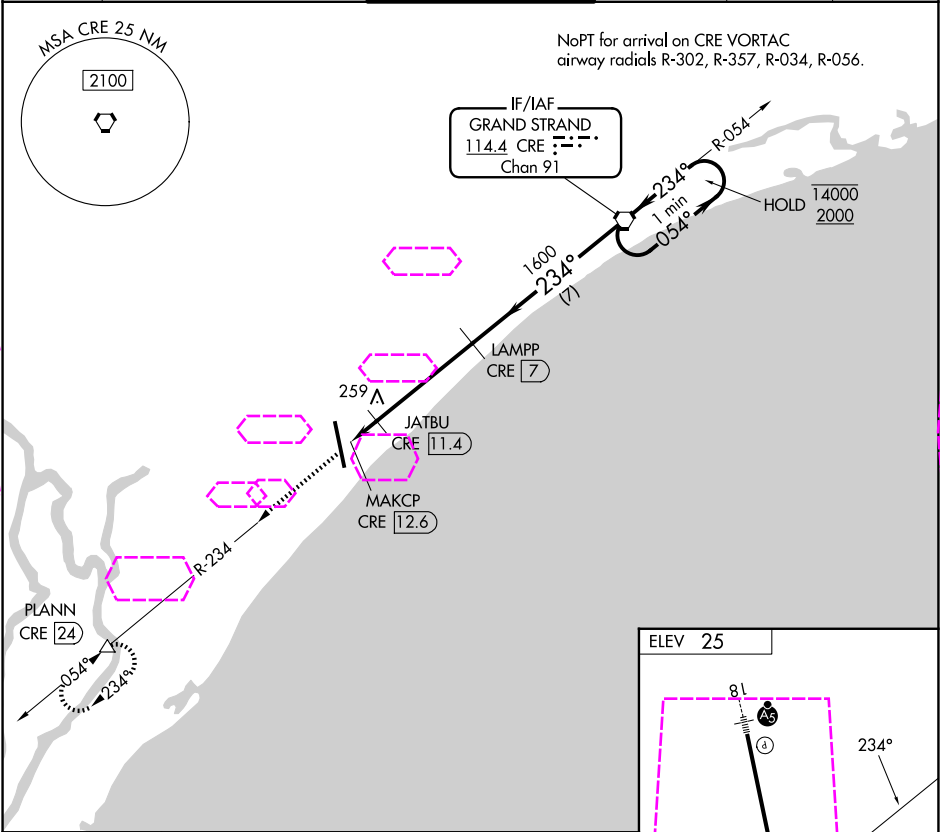
25219

VORTAC CRE <b>114.4</b> Chan <b>91</b>	APP CRS <b>234°</b>	Rwy Ldg TDZE Apt Elev	<b>N/A</b> <b>N/A</b> <b>25</b>
--	------------------------	-----------------------------	---------------------------------------

VOR-A

MYRTLE BEACH INTL (MYR)

DME required. 		MISSED APPROACH: Climb to 3000 on CRE VORTAC R-234 to PLANN/24 DME and hold, continue climb-in-hold to 3000.			
ATIS <b>123.925</b>	MYRTLE BEACH APP CON ★ (171° - 321°) <b>127.4 257.95</b> (322° - 170°) <b>119.2 350.3</b>	MYRTLE BEACH TOWER ★ <b>128.45</b> (CTAF) <b>0 259.3</b>	GND CON <b>120.3 275.8</b>	CLNC DEL <b>120.3</b>	UNICOM <b>122.95</b>



MYRTLE BEACH, SOUTH CAROLINA

Amcl 2B 03NOV22

33°41'N-78°56'W

MYRTLE BEACH INTL (MYR)

VOR-A

SE-2, 07 AUG 2025 to 04 SEP 2025

SE-2, 07 AUG 2025 to 04 SEP 2025