

MYRTLE BEACH, SOUTH CAROLINA

AL-280 (FAA)

24081

WAAS CH 93719 W36A	APP CRS 357°	Rwy Idg 9503 TDZE 25 Apt Elev 25
--	------------------------	---

RNAV (GPS) RWY 36

MYRTLE BEACH INTL (MYR)

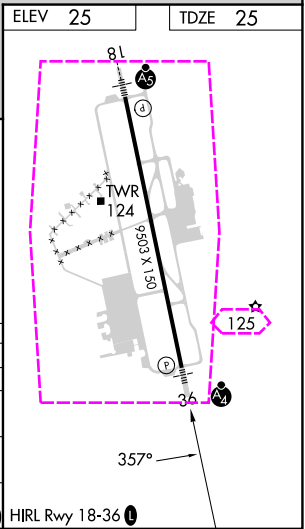
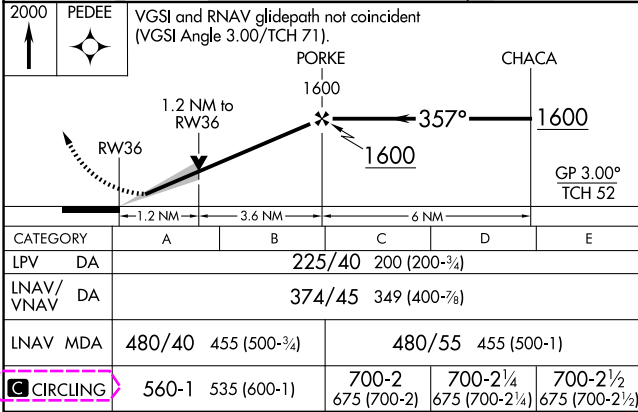
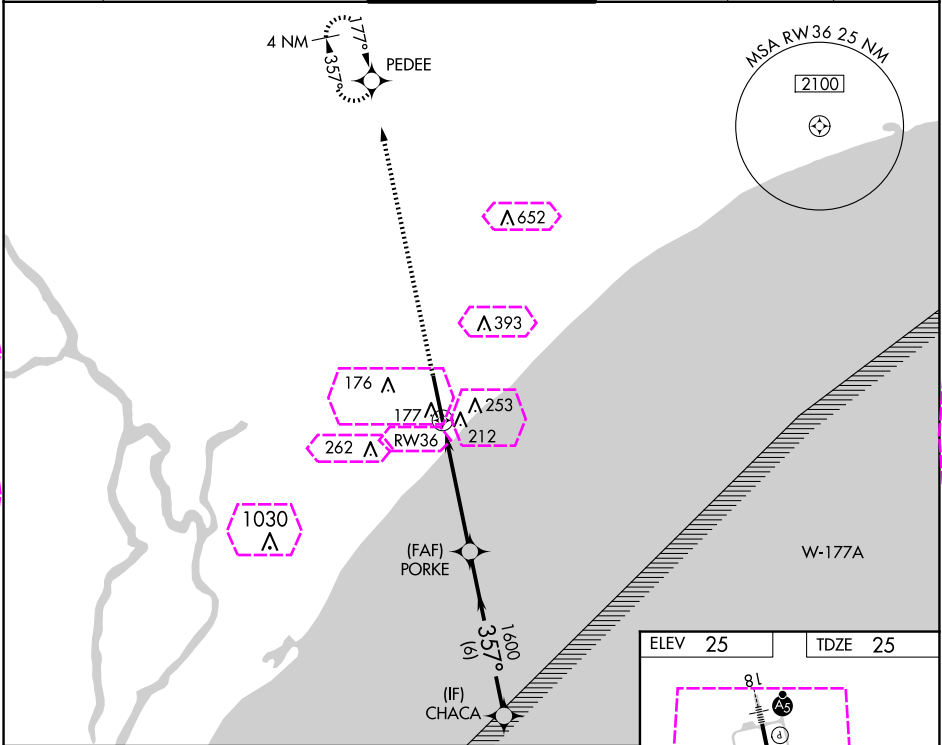
RNP APCH - GPS.

For uncompensated Baro-VNAV systems, LNAV/VNAV NA below -15°C or above 54°C. Inop table does not apply to LPV. For inop ALS, increase LNAV Cats C, D, and E visibility to 1½ SM.



MISSED APPROACH: Climb to 2000 direct PEDEE and hold.

ATIS 123.925	MYRTLE BEACH APP CON ★ (171° - 321°) 127.4 257.95 (322° - 170°) 119.2 350.3	MYRTLE BEACH TOWER ★ 128.45 (CTAF) 259.3	GND CON 120.3 275.8	CLNC DEL 120.3	UNICOM 122.95
------------------------	---	---	-------------------------------	--------------------------	-------------------------



MYRTLE BEACH, SOUTH CAROLINA
Amdt 4B 21MAR24

33°41'N-78°56'W

MYRTLE BEACH INTL (MYR)
RNAV (GPS) RWY 36

SE-2, 10 JUL 2025 to 07 AUG 2025

SE-2, 10 JUL 2025 to 07 AUG 2025

MYRTLE BEACH, SOUTH CAROLINA

AL-280 (FAA)

25219

WAAS CH 93719 W36A	APP CRS 357°	Rwy Ldg 9503 TDZE 25 Apt Elev 25
--	------------------------	---

RNAV (GPS) RWY 36

MYRTLE BEACH INTL (MYR)

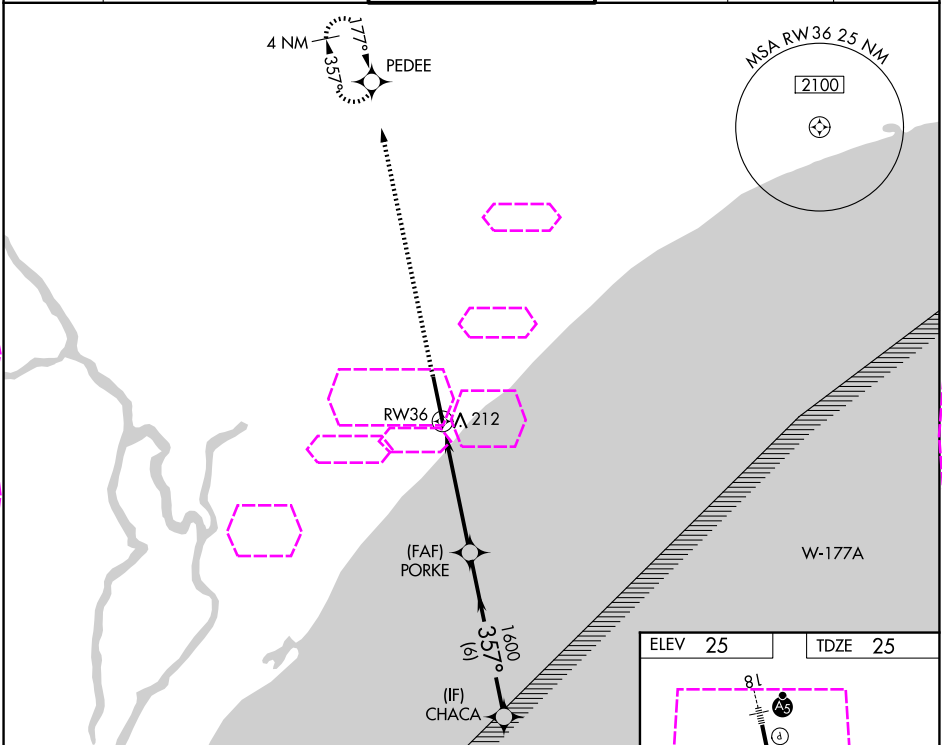
RNP APCH - GPS.

For uncompensated Baro-VNAV systems, LNAV/VNAV NA below -15°C or above 54°C. Inop table does not apply to LPV. For inop ALS, increase LNAV Cats C, D, and E visibility to 1½ SM.

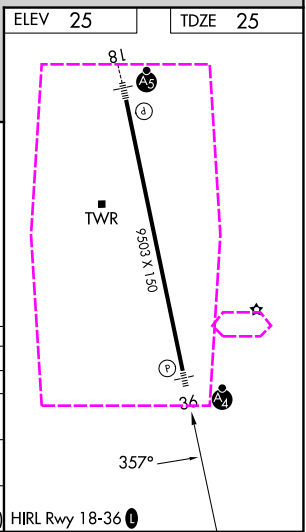
MALSF

MISSED APPROACH: Climb to 2000 direct PEDEE and hold.

ATIS 123.925	MYRTLE BEACH APP CON ★ (171° - 321°) 127.4 257.95 (322° - 170°) 119.2 350.3	MYRTLE BEACH TOWER ★ 128.45 (CTAF) 259.3	GND CON 120.3 275.8	CLNC DEL 120.3	UNICOM 122.95
------------------------	---	---	-------------------------------	--------------------------	-------------------------



2000	PEDEE	VGSI and RNAV glidepath not coincident (VGSI Angle 3.00/TCH 71).				
CATEGORY	A	B	C	D	E	
LPV DA	225/40		200 (200-¾)			
LNAV/VNAV DA	374/45		349 (400-⅞)			
LNAV MDA	480/40 455 (500-¾)		480/55 455 (500-1)			
CIRCLING	560-1 535 (600-1)		700-2 675 (700-2)		700-2¼ 675 (700-2¼)	700-2½ 675 (700-2½)



MYRTLE BEACH, SOUTH CAROLINA
Amdt 4B 21MAR24

33°41'N-78°56'W

MYRTLE BEACH INTL (MYR)
RNAV (GPS) RWY 36

SE-2, 07 AUG 2025 to 04 SEP 2025

SE-2, 07 AUG 2025 to 04 SEP 2025