

MYRTLE BEACH, SOUTH CAROLINA

AL-280 (FAA)

24081

WAAS CH 93819 W18A	APP CRS 177°	Rwy Idg 9503 TDZE 23 Apt Elev 25
--	------------------------	---

RNAV (GPS) RWY 18

MYRTLE BEACH INTL (MYR)

RNP APCH - GPS

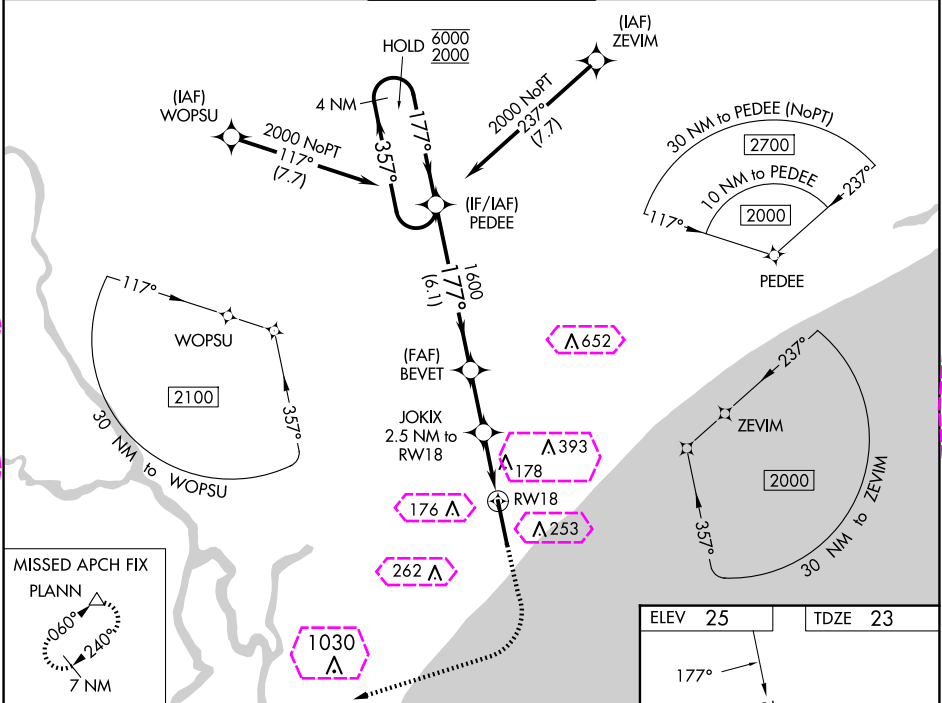
For uncompensated Baro-VNAV systems, LNAV/VNAV NA below -15°C or above 54°C. For inop ALS, increase LPV Cat E visibility to RVR 4000, increase LNAV/VNAV Cat E visibility to 1½ mile and increase LNAV Cats C, D and E visibility to RVR 6000.
*RVR 1800 authorized with use of FD or AP or HUD to DA.

MALSR



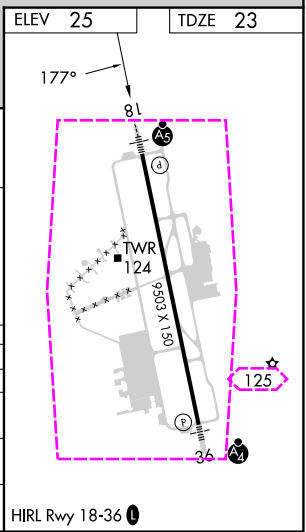
MISSED APPROACH: Climb to 500 then climbing right turn to 3000 direct PLANIN and hold, continue climb-in-hold to 3000.

ATIS 123.925	MYRTLE BEACH APP CON ★ (171° - 321°) 127.4 257.95 (322° - 170°) 119.2 350.3	MYRTLE BEACH TOWER ★ 128.45 (CTAF) 0 259.3	GND CON 120.3 275.8	CLNC DEL 120.3	UNICOM 122.95
------------------------	---	---	-------------------------------	--------------------------	-------------------------



MISSED APCH FIX
PLANN

VGSI and RNAV glidepath not coincident (VGSI Angle 3.00/TCH 64).					
4 NM Holding Pattern					
6000 ← 357° 2000 → 177°					
GP 3.00° TCH 52					
PEDEE BEVET JOKIX 1600 1600 2.5 NM to RWY 18 860 1.2 NM to RWY 18					
6.1 NM 2.3 NM 1.3 NM 1.2 NM					
CATEGORY	A	B	C	D	E
LPV DA*	223/24		200 (200-½)		
LNAV/VNAV DA	465/50		442 (500-1)		
LNAV MDA	440/24	417 (500-½)	440/40	417 (500-¾)	
CIRCLING	560-1	535 (600-1)	700-2 675 (700-2)	700-2¼ 675 (700-2¼)	700-2½ 675 (700-2½)



MYRTLE BEACH, SOUTH CAROLINA
Amdt 4C 21MAR24

33°41'N-78°56'W

MYRTLE BEACH INTL (MYR)
RNAV (GPS) RWY 18

MYRTLE BEACH, SOUTH CAROLINA

AL-280 (FAA)

25219

WAAS CH 93819 W18A	APP CRS 177°	Rwy Ldg 9503 TDZE 23 Apt Elev 25
--	------------------------	---

RNAV (GPS) RWY 18

MYRTLE BEACH INTL (MYR)

RNP APCH - GPS.

▼

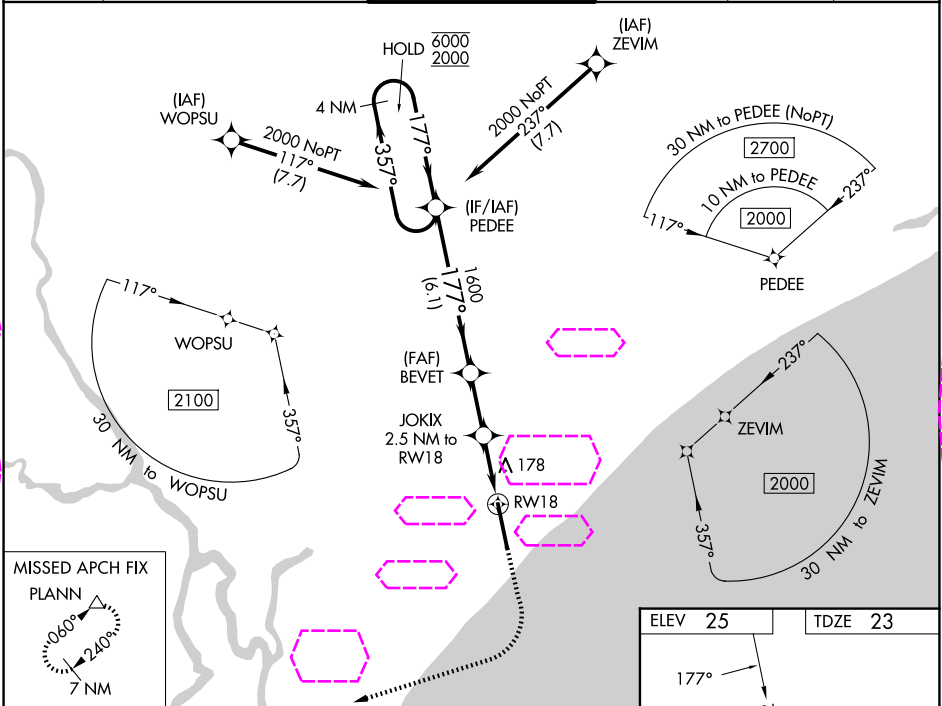
▲

For uncompensated Baro-VNAV systems, LNAV/VNAV NA below -15°C or above 54°C. For inop ALS, increase LPV Cat E visibility to RVR 4000; increase LNAV/VNAV Cat E visibility to 1½ mile and increase LNAV Cats C, D and E visibility to RVR 6000.
*RVR 1800 authorized with use of FD or AP or HUD to DA.

MALSR

MISSED APPROACH: Climb to 500 then climbing right turn to 3000 direct PLANIN and hold, continue climb-in-hold to 3000.

ATIS 123.925	MYRTLE BEACH APP CON ★ (171° - 321°) 127.4 257.95 (322° - 170°) 119.2 350.3	MYRTLE BEACH TOWER ★ 128.45 (CTAF) 0 259.3	GND CON 120.3 275.8	CLNC DEL 120.3	UNICOM 122.95
------------------------	---	---	-------------------------------	--------------------------	-------------------------



VGSI and RNAV glidepath not coincident (VGSI Angle 3.00/TCH 64).					
4 NM Holding Pattern					
6000 ← 357° 2000 → 177°					
GP 3.00° TCH 52					
PEEDE BEVET JOKIX 2.5 NM to RW18 1.2 NM to RW18					
6.1 NM 2.3 NM 1.3 NM 1.2 NM					
CATEGORY	A	B	C	D	E
LPV DA*	223/24		200 (200-½)		
LNAV/VNAV DA	465/50		442 (500-1)		
LNAV MDA	440/24	417 (500-½)	440/40	417 (500-¾)	
CIRCLING	560-1	535 (600-1)	700-2 675 (700-2)	700-2¼ 675 (700-2¼)	700-2½ 675 (700-2½)

