


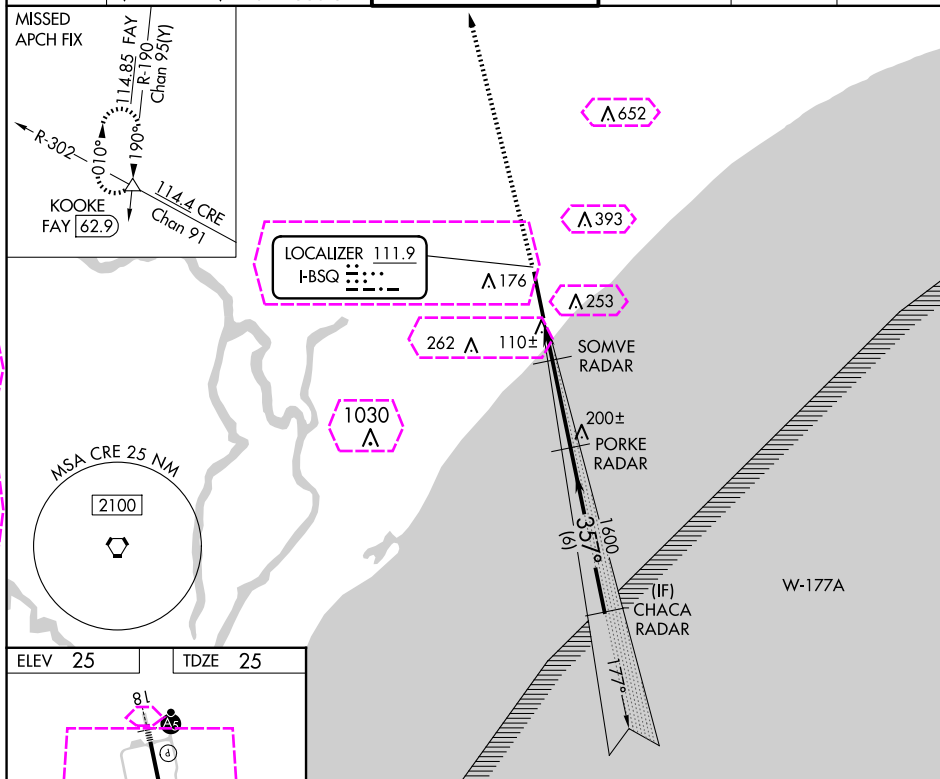


LOC I-BSQ <u>111.9</u>	APP CRS 357°	Rwy Idg 9503 TDZE 25 Apt Elev 25
----------------------------------	------------------------	---

ILS or LOC RWY 36

RADAR required.				 For inop ALS increase S-LOC 36 Cats D/E visibility to RVR 5000.		MALSF  = 		MISSED APPROACH: Climb to 3000 on heading 357° expect RADAR vectors to KOOKE INT/FAY 62.9 DME and hold.			
ATIS 123.925		MYRTLE BEACH APP CON★ (171° - 321°) 127.4 257.95 (322° - 170°) 119.2 350.3		MYRTLE BEACH TOWER★ 128.45 (CTAF) 0 259.3		GND CON 120.3 275.8		CLNC CON 120.3		UNICOM 122.95	



Plan View: Shows the HIRL Rwy 18-36, TWR 124, and various navigation aids. The distance from the FAF to the MAP is 4.8 NM. The distance from the MAP to the runway is 1.50 NM. The distance from the MAP to the runway is 1.50 NM. The distance from the MAP to the runway is 1.50 NM.

Profile View: Shows the glidepath (GS 3.00° TCH 52) and the VGS/ILS glidepath not coincident (VGS/ILS Angle 3.00°/TCH 71). The distance from the MAP to the runway is 1.50 NM. The distance from the MAP to the runway is 1.50 NM. The distance from the MAP to the runway is 1.50 NM.

LOC I-BSQ <u>111.9</u>	APP CRS 357°	Rwy Ldg 9503 TDZE 25 Apt Elev 25
----------------------------------	------------------------	---

ILS or LOC RWY 36

MYRTLE BEACH INTL (MYR)

RADAR required.

For inop ALS increase S-LOC 36 Cats D/E visibility to RVR 5000.



MISSED APPROACH: Climb to 3000 on heading 357° expect RADAR vectors to KOOKE INT/FAY 62.9 DME and hold.

ATIS 123.925	MYRTLE BEACH APP CON ★ (171° - 321°) 127.4 257.95 (322° - 170°) 119.2 350.3	MYRTLE BEACH TOWER ★ 128.45 (CTAF) 0 259.3	GND CON 120.3 275.8	CLNC DEL 120.3	UNICOM 122.95
------------------------	---	--	-------------------------------	--------------------------	-------------------------

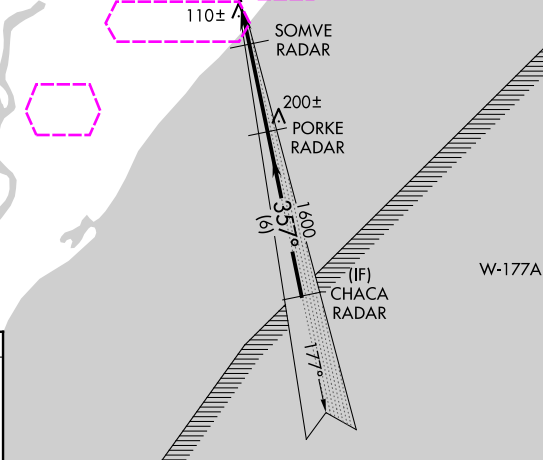
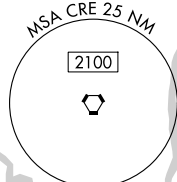
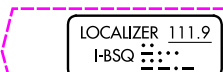
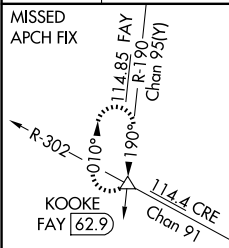
MISSED
APCH FIX

MYRTLE BEACH APP CON ★
(171° - 321°) **127.4 257.95**
(322° - 170°) **119.2 350.3**

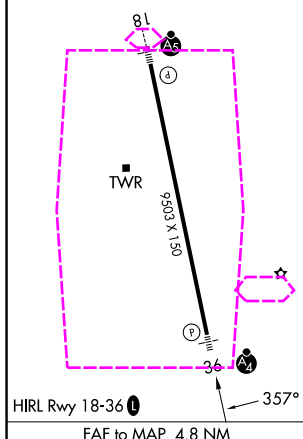
MYRTLE BEACH TOWER★
128.45 (CTAF) 259.3

GND CON
120.3 275.8

CLNC DEL
120.3

UNICOM
122 95

ELEV 25		TDZE 25
---------	--	---------



Knots	60	90	120	150	180
Min:Sec	4:48	3:12	2:24	1:55	1:36

3000
↑

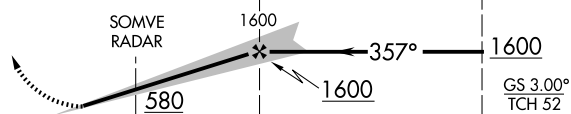
hde

357

KOON
△

VGSI and ILS glidepath not coincident (VGSI Angle 3.00/TCH 71).

PORKE
RADAR

CHACA
RADAR

	1.6 NM		3.2 NM		6 NM			
CATEGORY	A		B		C		D	E
S-ILS 36	225/40 200 (200-¾)							
S-LOC 36	360/40 335 (400-¾)							
CIRCLING	560-1	535 (600-1)	700-2 675 (700-2)	700-2¼ 675 (700-2¼)	700-2½ 675 (700-2½)			

MYRTLE BEACH, SOUTH CAROLINA

Amdt 5 03NOV22

33°41'N-78°56'W

MYRTLE BEACH INTL (MYR)

ILS or LOC RWY 36