

MYRTLE BEACH, SOUTH CAROLINA

AL-280 (FAA)

24081

LOC/DME I-MYR	APP CRS	Rwy Idg	9503
109.5	177°	TDZE	23
Chan 32		Apt Elev	25

ILS or LOC RWY 18

MYRTLE BEACH INTL (MYR)

DME required.

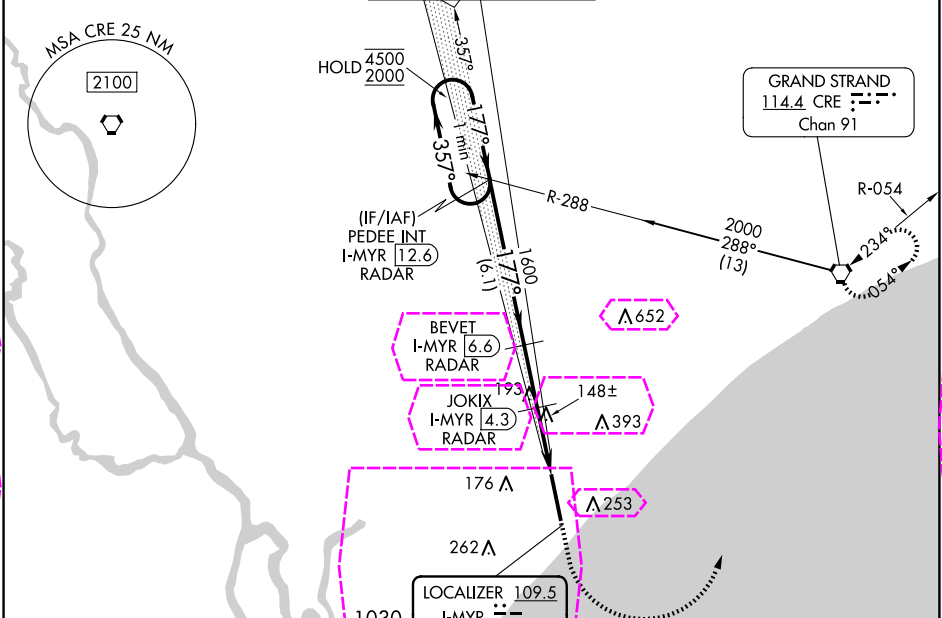
For inop ALS, increase S-ILS 18 Cat E visibility to RVR 4000 and S-LOC 18 Cats C/D/E visibility to RVR 5500.

*RVR 1800 authorized with use of FD or AP or HUD to DA.

MALSR

MISSED APPROACH: Climb to 1700 then climbing left turn to 3000 direct CRE VORTAC and hold.

ATIS	MYRTLE BEACH APP CON *	MYRTLE BEACH TOWER *	GND CON	CLNC DEL	UNICOM
123.925	(171° - 321°) 127.4 257.95 (322° - 170°) 119.2 350.3	128.45 (CTAF) 0 259.3	120.3 275.8	120.3	122.95



One Minute Holding Pattern

VGSI and ILS glidepath not coincident (VGSI Angle 3.00/TCH 64).

PEDEE INT I-MYR 12.6 RADAR

BEVET I-MYR 6.6 RADAR

JOKIX I-MYR 4.3 RADAR

1700 3000 CRE

4500 2000 357° 177°

GS 3.00° TCH 52

1600 860

6.1 NM 2.3 NM 1.5 NM 1 NM

CATEGORY	A	B	C	D	E
S-ILS 18 *	223/24 200 (200-1/2)				
S-LOC 18	400/24	377 (400-1/2)	400/35 377 (400-3/4)		
CIRCLING	560-1	535 (600-1)	700-2 675 (700-2)	700-2 1/4 675 (700-2 1/4)	700-2 1/2 675 (700-2 1/2)

HIRL Rwy 18-36

ELEV 25 TDZE 23

177°

81

TWR 124

9503 X 150

125

36

MYRTLE BEACH, SOUTH CAROLINA




AL-280 (FAA)

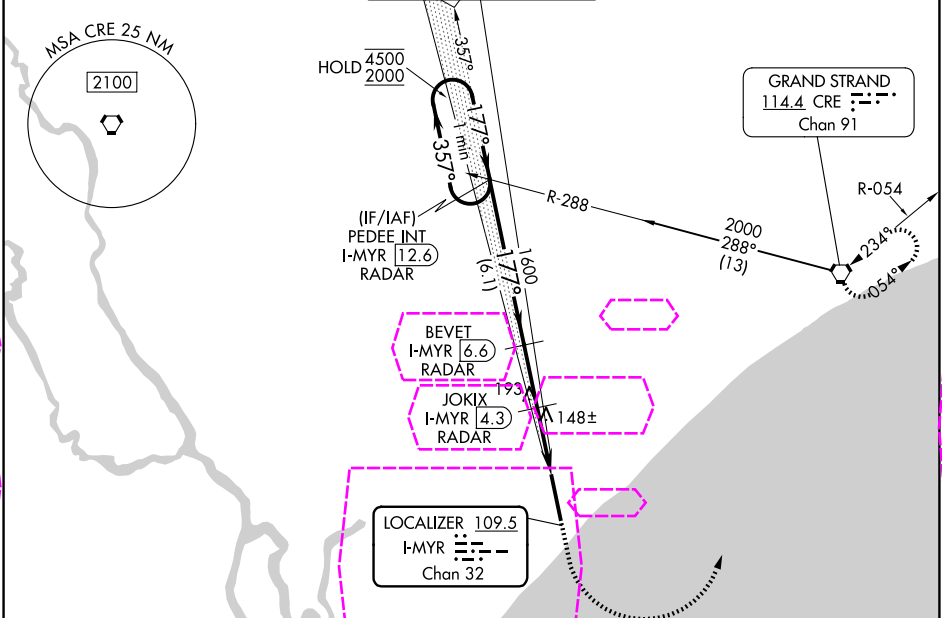
25219

LOC/DME I-MYR	APP CRS	Rwy Ldg	9503
109.5	177°	TDZE	23
Chan 32		Apt Elev	25

ILS or LOC RWY 18

MYRTLE BEACH INTL (MYR)

DME required.		<div>MALSR</div> <div></div>	MISSED APPROACH: Climb to 1700 then climbing left turn to 3000 direct CRE VORTAC and hold.				
<div></div> For inop ALS, increase S-ILS 18 Cat E visibility to RVR 4000 and S-LOC 18 Cats C/D/E visibility to RVR 5500.							
<div></div> *RVR 1800 authorized with use of FD or AP or HUD to DA.							
<div>ATIS</div> <div>123.925</div>	<div>MYRTLE BEACH APP CON ★</div> <div>(171° - 321°) 127.4 257.95</div> <div>(322° - 170°) 119.2 350.3</div>	<div>MYRTLE BEACH TOWER ★</div> <div>128.45 (CTAF) 0 259.3</div>	<div>GND CON</div> <div>120.3 275.8</div>	<div>CLNC DEL</div> <div>120.3</div>	<div>UNICOM</div> <div>122.95</div>		



One Minute Holding Pattern

VGSI and ILS glidepath not coincident (VGSI Angle 3.00/TCH 64).

PEDEE INT I-MYR 12.6 RADAR

BEVET I-MYR 6.6 RADAR

JOKIX I-MYR 4.3 RADAR

I-MYR 2.8

I-MYR 1.8

GS 3.00° TCH 52

4500 ← 357° → 177°

2000

1700

3000

CRE

1600

860

6.1 NM

2.3 NM

1.5 NM

1 NM

CATEGORY	A	B	C	D	E
S-ILS 18 *	223/24 200 (200-½)				
S-LOC 18	400/24	377 (400-½)	400/35 377 (400-¾)		
CIRCLING	560-1	535 (600-1)	700-2 675 (700-2)	700-2¼ 675 (700-2¼)	700-2½ 675 (700-2½)

HIRL Rwy 18-36

ELEV 25

TDZE 23

177°

TWR

9503 X 150

36

MYRTLE BEACH, SOUTH CAROLINA

Amtd 6A 21MAR24

33°41'N-78°56'W

MYRTLE BEACH INTL (MYR)

ILS or LOC RWY 18