

MYRTLE BEACH, SOUTH CAROLINA

AL-280 (FAA)

24081

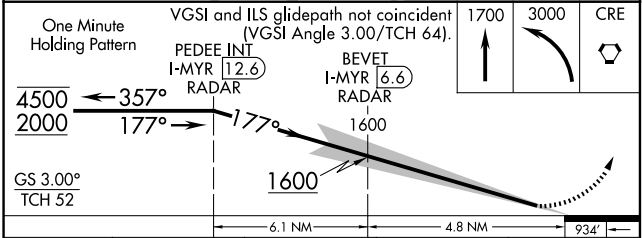
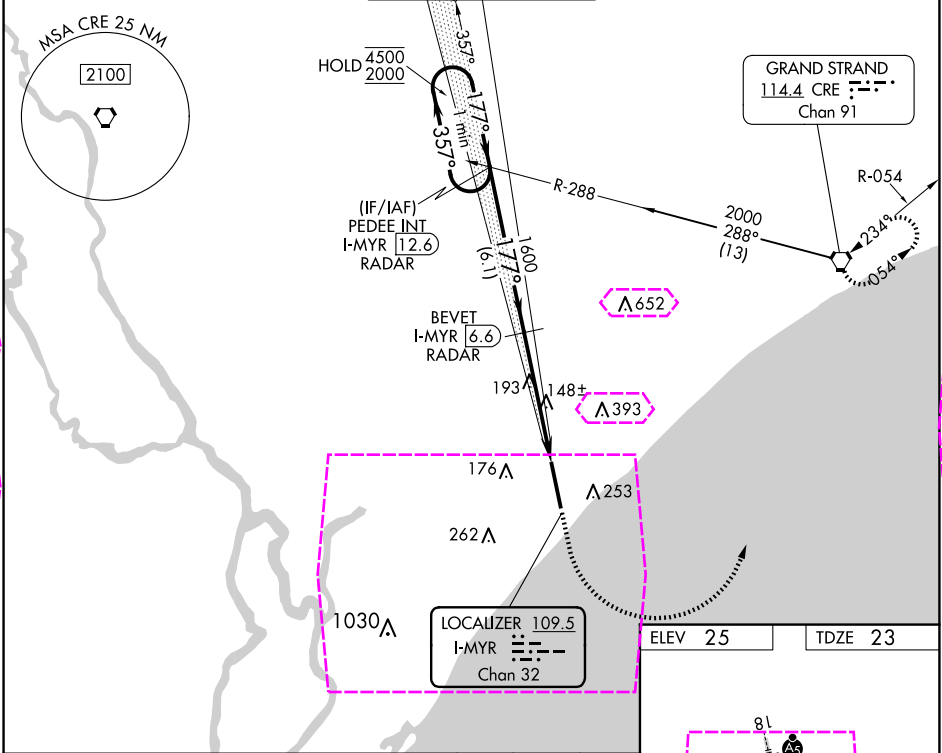
LOC/DME I-MYR	APP CRS	Rwy Idg	9503
109.5	177°	TDZE	23
Chan 32		Apt Elev	25

ILS RWY 18 (SA CAT I & II)

MYRTLE BEACH INTL (MYR)

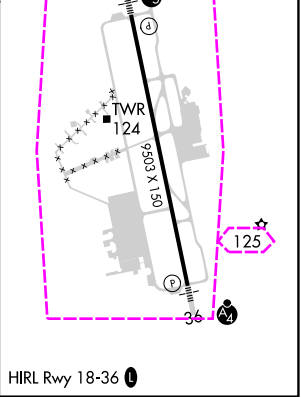
DME required.	MALSR	MISSED APPROACH: Climb to 1700 then climbing left turn to 3000 direct CRE VORTAC and hold.
SA CAT I/II: Requires specific OPSPEC, MSPEC, or LOA approval.		

ATIS	MYRTLE BEACH APP CON *	MYRTLE BEACH TOWER *	GND CON	CLNC DEL	UNICOM
123.925	(171° - 321°) 127.4 257.95 (322° - 170°) 119.2 350.3	128.45 (CTAF) 0 259.3	120.3 275.8	120.3	122.95



CATEGORY	A	B	C	D
S-ILS 18		SA CAT I RA 156/14	150 DA 173	
S-ILS 18		SA CAT II RA 101/12	100 DA 123	

SA CATEGORY I & II SPECIAL AIRCREW
& AIRCRAFT CERTIFICATION REQUIRED



MYRTLE BEACH, SOUTH CAROLINA

Amtd 6A 21MAR24

33°41'N-78°56'W

MYRTLE BEACH INTL (MYR)
ILS RWY 18 (SA CAT I & II)

MYRTLE BEACH, SOUTH CAROLINA

AL-280 (FAA)

25219

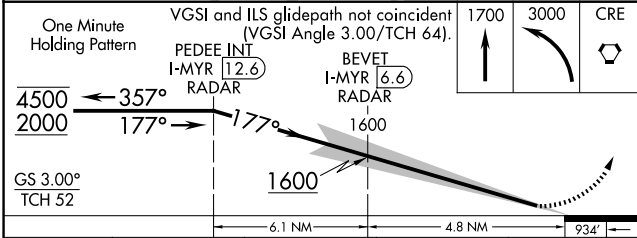
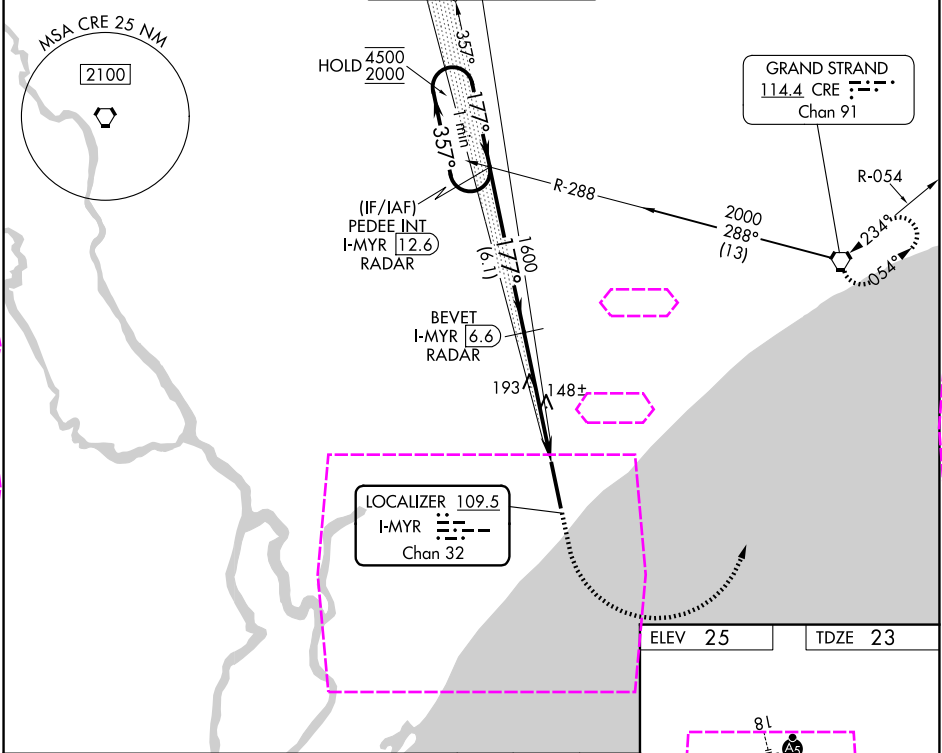
LOC/DME I-MYR	APP CRS	Rwy Ldg	9503
109.5	177°	TDZE	23
Chan 32		Apt Elev	25

ILS RWY 18 (SA CAT I & II)

MYRTLE BEACH INTL (MYR)

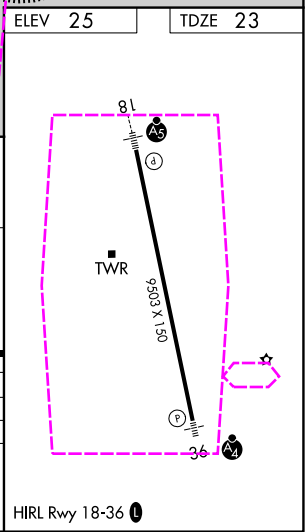
DME required.	MALSR	MISSED APPROACH: Climb to 1700 then climbing left turn to 3000 direct CRE VORTAC and hold.
SA CAT I/II: Requires specific OPSPEC, MSPEC, or LOA approval.		

ATIS	MYRTLE BEACH APP CON *	MYRTLE BEACH TOWER *	GND CON	CLNC DEL	UNICOM
123.925	(171° - 321°) 127.4 257.95 (322° - 170°) 119.2 350.3	128.45 (CTAF) 0 259.3	120.3 275.8	120.3	122.95



CATEGORY	A	B	C	D
S-ILS 18		SA CAT I RA 156/14	150 DA 173	
S-ILS 18		SA CAT II RA 101/12	100 DA 123	

SA CATEGORY I & II SPECIAL AIRCREW & AIRCRAFT CERTIFICATION REQUIRED



MYRTLE BEACH, SOUTH CAROLINA

Amtd 6A 21MAR24

33°41'N-78°56'W

MYRTLE BEACH INTL (MYR)

ILS RWY 18 (SA CAT I & II)

SE-2, 07 AUG 2025 to 04 SEP 2025

SE-2, 07 AUG 2025 to 04 SEP 2025