

(ZETTR4.ZETTR) 24137

ZETTR FOUR DEPARTURE (RNAV)

AL-276 (FAA)

SELFRRIDGE ANGB (MTC)

MOUNT CLEMENS, MICHIGAN

SELFRRIDGE DEP CON ★

119.6 391.9

ATIS

125.325 270.1

CLNC DEL

128.3 275.8

GND CON

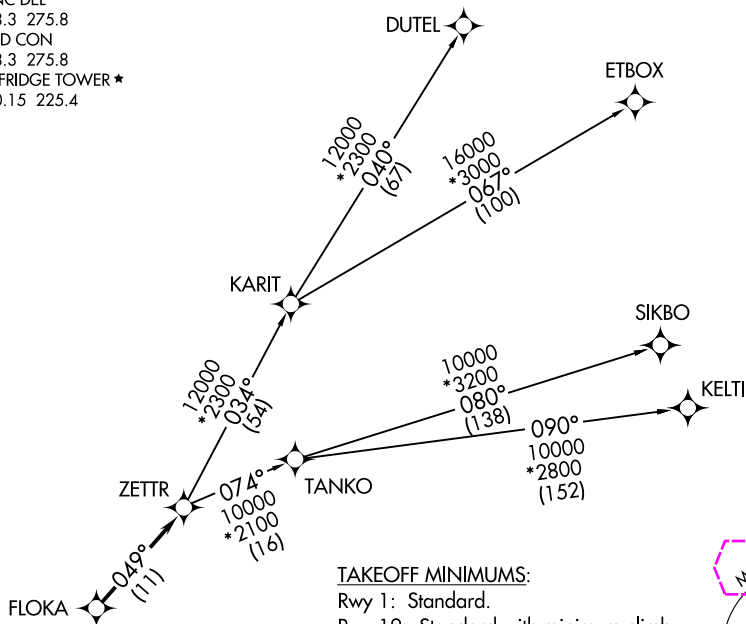
128.3 275.8

SELFRRIDGE TOWER ★

120.15 225.4

RNAV 1 - DME/DME/IRU or GPS.

RADAR required.

**TOP ALTITUDE:
ASSIGNED BY ATC**TAKEOFF MINIMUMS:

Rwy 1: Standard.

Rwy 19: Standard with minimum climb of 235' per NM to 1500.

MSA MTC 25 NM

2800

↑ 007°

↓ 187°

NOTE: Turbojet departures at/above 10000, maintain 280K until advised by ATC.

NOTE: TANKO Transition: For use by CYYZ area arrivals only, or as assigned by ATC.

NOTE: Chart not to scale.



DEPARTURE ROUTE DESCRIPTION

TAKEOFF RUNWAY 1: Climb on heading 007° or as assigned by ATC, thence....TAKEOFF RUNWAY 19: Climb on heading 187° or as assigned by ATC, thence....

....for RADAR vectors to FLOKA, then on track 049° to ZETTR, then on (transition). Maintain ATC assigned altitude, expect filed altitude 10 minutes after departure.

DUTEL TRANSITION (ZETTR4.DUTEL):ETBOX TRANSITION (ZETTR4.ETBOX):KELTI TRANSITION (ZETTR4.KELTI):SIKBO TRANSITION (ZETTR4.SIKBO):TANKO TRANSITION (ZETTR4.TANKO):

ZETTR FOUR DEPARTURE (RNAV)

(ZETTR4.ZETTR) 16MAY24

MOUNT CLEMENS, MICHIGAN

SELFRRIDGE ANGB (MTC)

EC-1, 10 JUL 2025 to 07 AUG 2025

EC-1, 10 JUL 2025 to 07 AUG 2025

(ZETTR4.ZETTR) 25219

ZETTR FOUR DEPARTURE (RNAV)

AL-276 (FAA)

SELFDRIDGE ANGB (KMTC)

MOUNT CLEMENS, MICHIGAN

SELFDRIDGE DEP CON ★

119.6 391.9

ATIS

125.325 270.1

CLNC DEL

128.3 275.8

GND CON

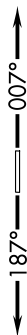
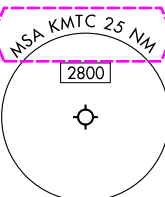
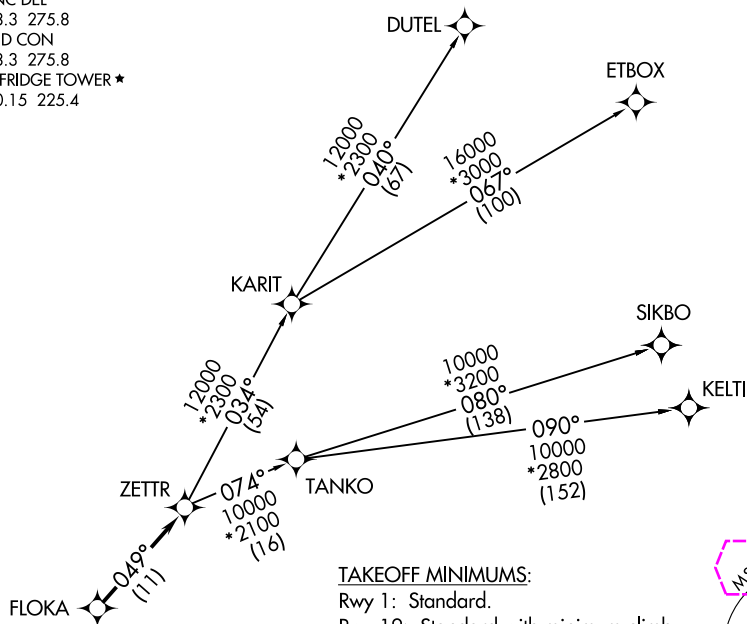
128.3 275.8

SELFDRIDGE TOWER ★

120.15 225.4

RNAV 1 - DME/DME/IRU or GPS.

RADAR required.

**TOP ALTITUDE:
ASSIGNED BY ATC**

NOTE: Turbojet departures at/above 10000, maintain 280K until advised by ATC.

NOTE: TANKO Transition: For use by CYYZ area arrivals only, or as assigned by ATC.

NOTE: Chart not to scale.



DEPARTURE ROUTE DESCRIPTION

TAKEOFF RUNWAY 1: Climb on heading 007° or as assigned by ATC, thence....TAKEOFF RUNWAY 19: Climb on heading 187° or as assigned by ATC, thence....

....for RADAR vectors to FLOKA, then on track 049° to ZETTR, then on (transition). Maintain ATC assigned altitude, expect filed altitude 10 minutes after departure.

DUTEL TRANSITION (ZETTR4.DUTEL):ETBOX TRANSITION (ZETTR4.ETBOX):KELTI TRANSITION (ZETTR4.KELTI):SIKBO TRANSITION (ZETTR4.SIKBO):TANKO TRANSITION (ZETTR4.TANKO):

ZETTR FOUR DEPARTURE (RNAV)

(ZETTR4.ZETTR) 16MAY24

MOUNT CLEMENS, MICHIGAN

SELFDRIDGE ANGB (KMTC)

EC-1, 07 AUG 2025 to 04 SEP 2025

EC-1, 07 AUG 2025 to 04 SEP 2025