

(TRMML4.TRMML) 24137

## TRMML FOUR DEPARTURE (RNAV)

AL-276 (FAA)

SELFLEDGE ANGB (MTC)

MOUNT CLEMENS, MICHIGAN

**TOP ALTITUDE:  
ASSIGNED BY ATC**

RNAV 1 - DME/DME/IRU or GPS.

RADAR required.

SELFLEDGE DEP CON \*

119.6 391.9

ATIS

125.325 270.1

CLNC DEL

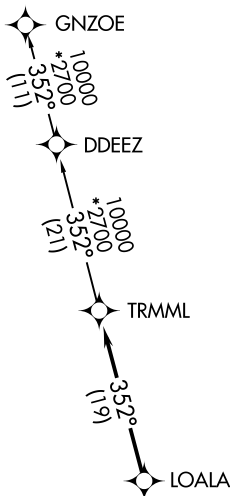
128.3 275.8

GND CON

128.3 275.8

SELFLEDGE TOWER \*

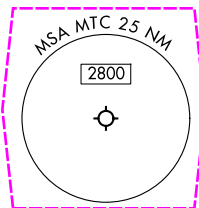
120.15 225.4

TAKEOFF MINIMUMS:

Rwy 1: Standard.

Rwy 19: Standard with minimum climb  
of 235' per NM to 1500.NOTE: Turbojet departures at/above 10000,  
maintain 280K until advised by ATC.

NOTE: Chart not to scale.



## DEPARTURE ROUTE DESCRIPTION

TAKEOFF RUNWAY 1: Climb on heading 007° or as assigned by ATC,  
thence....TAKEOFF RUNWAY 19: Climb on heading 187° or as assigned by ATC,  
thence........for RADAR vectors to LOALA, then on track 352° to TRMML, then on (transition).  
Maintain ATC assigned altitude, expect filed altitude 10 minutes after departure.GNZOE TRANSITION (TRMML4.GNZOE):

## TRMML FOUR DEPARTURE (RNAV)

(TRMML4.TRMML) 16MAY24

MOUNT CLEMENS, MICHIGAN

SELFLEDGE ANGB (MTC)

EC-1, 10 JUL 2025 to 07 AUG 2025

EC-1, 10 JUL 2025 to 07 AUG 2025

(TRMML4.TRMML) 25219

# TRMML FOUR DEPARTURE (RNAV)

AL-276 (FAA)

SELFPRIDGE ANGB (KMTC)

MOUNT CLEMENS, MICHIGAN

**TOP ALTITUDE:  
ASSIGNED BY ATC**

RNAV 1 - DME/DME/IRU or GPS.

RADAR required.

SELFPRIDGE DEP CON ★

119.6 391.9

ATIS

125.325 270.1

CLNC DEL

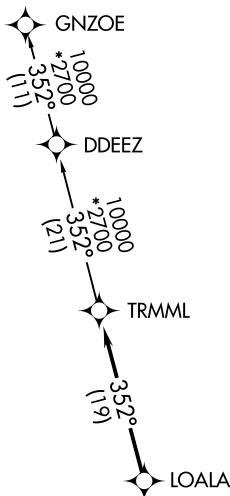
128.3 275.8

GND CON

128.3 275.8

SELFPRIDGE TOWER ★

120.15 225.4



## TAKEOFF MINIMUMS:

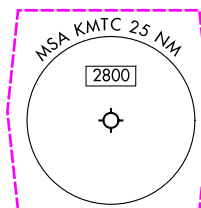
Rwy 1: Standard.

Rwy 19: Standard with minimum climb of 235' per NM to 1500.

NOTE: Turbojet departures at/above 10000, maintain 280K until advised by ATC.



NOTE: Chart not to scale.



## DEPARTURE ROUTE DESCRIPTION

TAKEOFF RUNWAY 1: Climb on heading 007° or as assigned by ATC, thence....

TAKEOFF RUNWAY 19: Climb on heading 187° or as assigned by ATC, thence....

....for RADAR vectors to LOALA, then on track 352° to TRMML, then on (transition). Maintain ATC assigned altitude, expect filed altitude 10 minutes after departure.

GNZOE TRANSITION (TRMML4.GNZOE):

# TRMML FOUR DEPARTURE (RNAV)

(TRMML4.TRMML) 16MAY24

MOUNT CLEMENS, MICHIGAN

SELFPRIDGE ANGB (KMTC)

EC-1, 07 AUG 2025 to 04 SEP 2025

EC-1, 07 AUG 2025 to 04 SEP 2025