

(PAVYL3.PAVYL) 24137

PAVYL THREE DEPARTURE (RNAV)

AL-276 (FAA)

SELFRRIDGE ANGB (MTC)
MOUNT CLEMENS, MICHIGAN

EC-1, 10 JUL 2025 to 07 AUG 2025

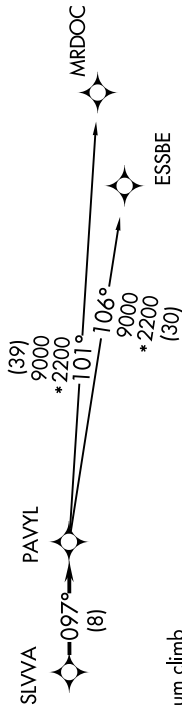
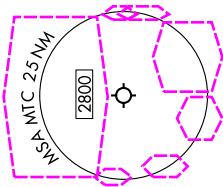
ATIS
125.325 270.1
CLNC DEL
128.3 275.8
GND CON
128.3 275.8
SELFRRIDGE TOWER ★
120.15 225.4
SELFRRIDGE DEP CON ★
119.6 391.9

NOTE: Jet departures at/above 10000,
maintain 280K until advised by ATC.

RNAV 1 - DME/DME/IRU or GPS.
RADAR required.

TOP ALTITUDE:
ASSIGNED BY ATC

007° ← → 187°



TAKEOFF MINIMUMS:
Rwy 1: Standard.
Rwy 19: Standard with minimum climb
of 235' per NM to 1500.

NOTE: Chart not to scale.

DEPARTURE ROUTE DESCRIPTION

TAKEOFF RUNWAY 1: Climb on heading 007° or as assigned by ATC, thence...
TAKEOFF RUNWAY 19: Climb on heading 187° or as assigned by ATC, thence...

....for RADAR vectors to SLWA, then on track 097° to PAVYL, then on (transition). Maintain 17000 or as assigned by ATC, expect filed altitude 10 minutes after departure.

ESSBE TRANSITION (PAVYL3.ESSBE):
MRDOC TRANSITION (PAVYL3.MRDOC):

EC-1, 10 JUL 2025 to 07 AUG 2025

PAVYL THREE DEPARTURE (RNAV)
(PAVYL3.PAVYL) 16MAY24

MOUNT CLEMENS, MICHIGAN
SELFRRIDGE ANGB (MTC)

(PAVYL3.PAVYL) 25219

PAVYL THREE DEPARTURE (RNAV)

AL-276 (FAA)

SELFRRIDGE ANGB (KMTC)

MOUNT CLEMENS, MICHIGAN

EC-1, 07 AUG 2025 to 04 SEP 2025

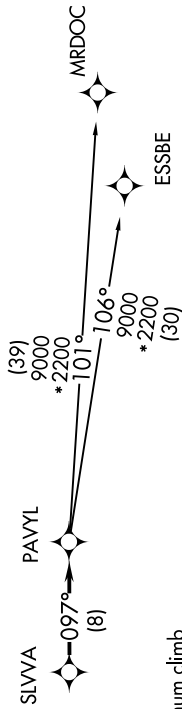
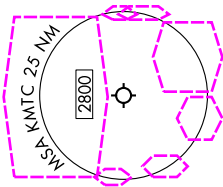
ATIS
125.325 270.1
CLNC DEL
128.3 275.8
GND CON
128.3 275.8
SELFRRIDGE TOWER *
120.15 225.4
SELFRRIDGE DEP CON *
119.6 391.9

NOTE: Jet departures at/above 10000,
maintain 280K until advised by ATC.

RNAV 1 - DME/DME/IRU or GPS.
RADAR required.

TOP ALTITUDE:
ASSIGNED BY ATC

007° 187°



TAKEOFF MINIMUMS:
Rwy 1: Standard.
Rwy 19: Standard with minimum climb
of 235' per NM to 1500.

NOTE: Chart not to scale.

DEPARTURE ROUTE DESCRIPTION

TAKEOFF RUNWAY 1: Climb on heading 007° or as assigned by ATC, thence...
TAKEOFF RUNWAY 19: Climb on heading 187° or as assigned by ATC, thence...

....for RADAR vectors to SLWA, then on track 097° to PAVYL, then on (transition). Maintain 17000 or as assigned by ATC, expect filed altitude 10 minutes after departure.

ESSBE TRANSITION (PAVYL3.ESSBE):
MRDOC TRANSITION (PAVYL3.MRDOC):

EC-1, 07 AUG 2025 to 04 SEP 2025

PAVYL THREE DEPARTURE (RNAV)

(PAVYL3.PAVYL) 16MAY24

MOUNT CLEMENS, MICHIGAN

SELFRRIDGE ANGB (KMTC)