

(LIDDS4.LIDDS) 25107

LIDDS FOUR DEPARTURE (RNAV)

AL-276 (FAA)

SELFRRIDGE ANGB (MTC)
MOUNT CLEMENS, MICHIGAN

EC-1, 10 JUL 2025 to 07 AUG 2025

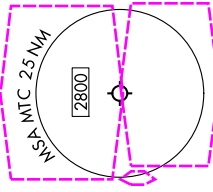
SELFRRIDGE DEP CON ★
119.6 391.9
ATIS
125.325 270.1
CLNC DEL
128.3 275.8
GND CON
128.3 275.8
SELFRRIDGE TOWER ★
120.15 225.4

RNAV 1 - DME/DME/IRU or GPS.
RADAR required
RADAR required for non-GPS equipped aircraft.

TAKEOFF MINIMUMS:
Rwy 1: Standard.
Rwy 19: Standard with minimum climb
of 235' per NM to 1500.

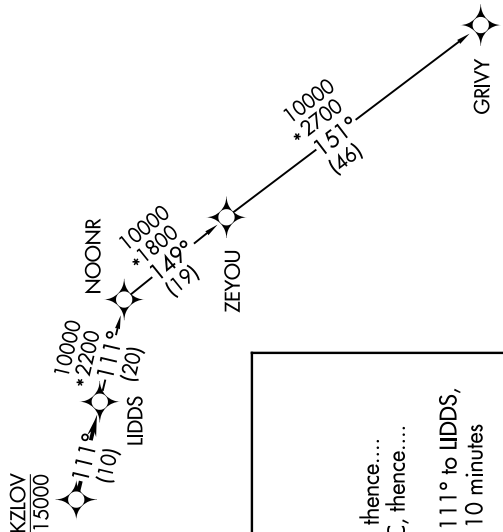
007° ← → 187°

TOP ALTITUDE:
ASSIGNED BY ATC



NOTE: Turbojet departures at/above 10000,
maintain 280K until advised by ATC.

N



NOTE: Chart not to scale.

DEPARTURE ROUTE DESCRIPTION

TAKEOFF RUNWAY 1: Climb on heading 007° or as assigned by ATC, thence....
TAKEOFF RUNWAY 19: Climb on heading 187° or as assigned by ATC, thence....
.... for RADAR vectors to cross KZLOV at or below 15000, then on track 111° to LIDDS,
then on (transition). Maintain ATC assigned altitude, expect filed altitude 10 minutes
after departure.

GRIVY TRANSITION (LIDDS4.GRIVY):

EC-1, 10 JUL 2025 to 07 AUG 2025

LIDDS FOUR DEPARTURE (RNAV)

(LIDDS4.LIDDS) 17APR25

MOUNT CLEMENS, MICHIGAN
SELFRRIDGE ANGB (MTC)

(LIDDS4.LIDDS) 25219

LIDDS FOUR DEPARTURE (RNAV)

AL-276 (FAA)

SELFRRIDGE ANGB (KMTC)

MOUNT CLEMENS, MICHIGAN

EC-1, 07 AUG 2025 to 04 SEP 2025

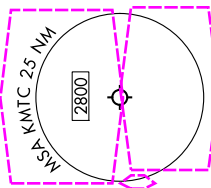
SELFRRIDGE DEP CON ★
119.6 391.9
ATIS
125.325 270.1
CLNC DEL
128.3 275.8
GND CON
128.3 275.8
SELFRRIDGE TOWER ★
120.15 225.4

RNAV - DME/DME/IRU or GPS.
RADAR required
RADAR required for non-GPS equipped aircraft.

TAKEOFF MINIMUMS:
Rwy 1: Standard.
Rwy 19: Standard with minimum climb
of 235' per NM to 1500.

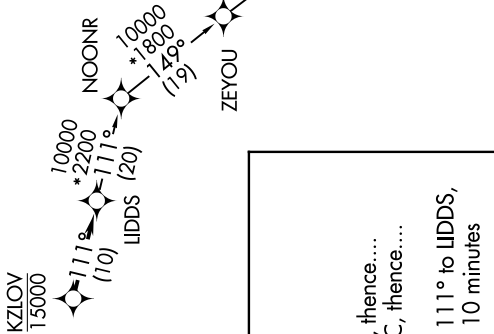
007° ← → 187°

**TOP ALTITUDE:
ASSIGNED BY ATC**



NOTE: Turbojet departures at/above 10000,
maintain 280K until advised by ATC.

N



NOTE: Chart not to scale.

DEPARTURE ROUTE DESCRIPTION

TAKEOFF RUNWAY 1: Climb on heading 007° or as assigned by ATC, thence....
TAKEOFF RUNWAY 19: Climb on heading 187° or as assigned by ATC, thence....
.... for RADAR vectors to cross KZLOV at or below 15000, then on track 111° to LIDDS,
then on (transition). Maintain ATC assigned altitude, expect filed altitude 10 minutes
after departure.

GRIVY TRANSITION (LIDDS4.GRIVY):

EC-1, 07 AUG 2025 to 04 SEP 2025

LIDDS FOUR DEPARTURE (RNAV)

(LIDDS4.LIDDS) 17APR25

MOUNT CLEMENS, MICHIGAN

SELFRRIDGE ANGB (KMTC)