

(HHOWE4.HHOWE) 24137

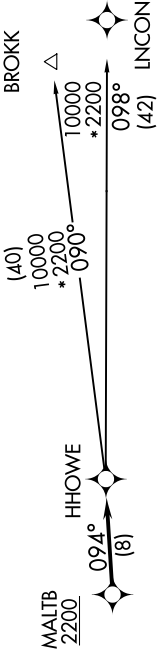
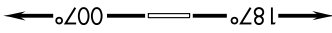
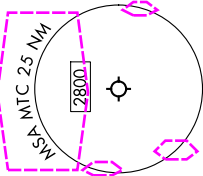
SELFTRIDGE ANGB (MTC)
MOUNT CLEMENS, MICHIGAN

HHOWE FOUR DEPARTURE (RNAV) AL-276 (FAA)

EC-1, 10 JUL 2025 to 07 AUG 2025

RNAV-1 DME/DME/IRU or GPS.
RADAR required.

SELFTRIDGE DEP CON ★
119.6 391.9
ATIS
125.325 270.1
CLNC DEL
128.3 275.8
GND CON
128.3 275.8
SELFTRIDGE TOWER ★
120.15 225.4



NOTE: Turbojet departures at /above 10000, maintain 280K until advised by ATC.
NOTE: BROKK TRANSITION: For use by flights filed at or below FL270, or as assigned by ATC.

TAKEOFF MINIMUMS:
Rwy 1: Standard.
Rwy 19: Standard with minimum climb of 235' per NM to 1500.

NOTE: Chart not to scale.

DEPARTURE ROUTE DESCRIPTION

TAKEOFF RUNWAY 1: Climb on heading 007° or as assigned by ATC, thence....
TAKEOFF RUNWAY 19: Climb on heading 187° or as assigned by ATC, thence....
....for RADAR vectors to cross MALTB at or above 2200, then on track 094° to HHOWE, then on (transition).
Maintain ATC assigned altitude, expect filed altitude 10 minutes after departure.
BROKK TRANSITION (HHOWE4,BROKK):
LINCON TRANSITION (HHOWE4,LINCON):

EC-1, 10 JUL 2025 to 07 AUG 2025

HHOWE FOUR DEPARTURE (RNAV)
(HHOWE4.HHOWE) 16MAY24

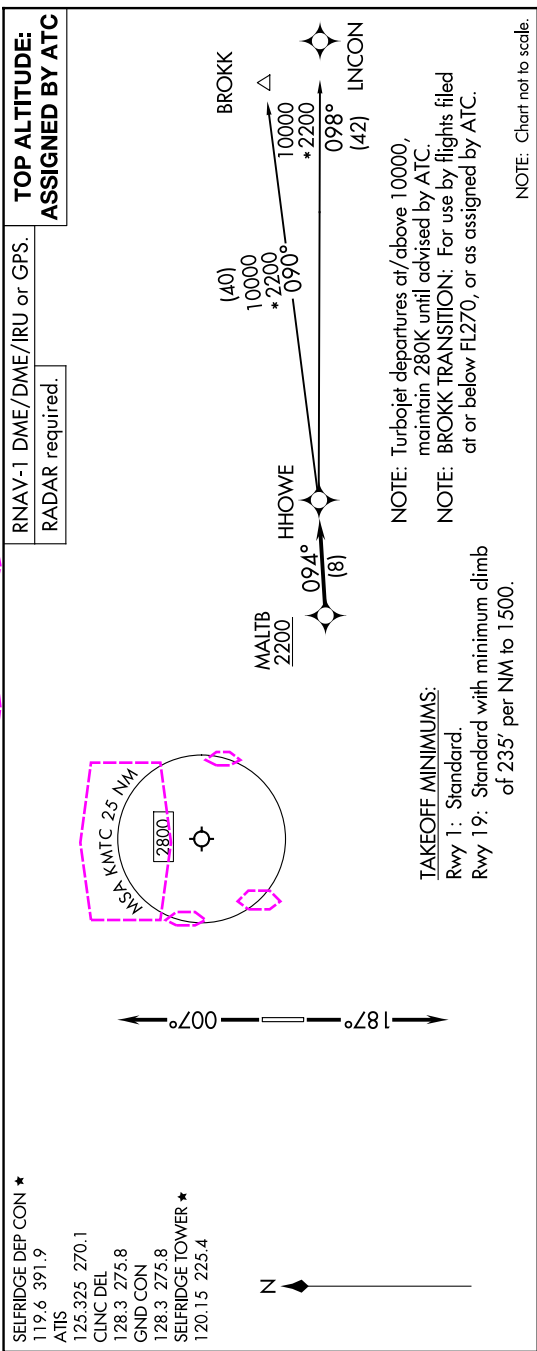
MOUNT CLEMENS, MICHIGAN
SELFTRIDGE ANGB (MTC)

(HHOWE4.HHOWE) 25219

SELFPRIDGE ANGB (KMTC)
MOUNT CLEMENS, MICHIGAN

HHOWE FOUR DEPARTURE (RNAV) AL-276 (FAA)

EC-1, 07 AUG 2025 to 04 SEP 2025



DEPARTURE ROUTE DESCRIPTION

TAKEOFF RUNWAY 1: Climb on heading 007° or as assigned by ATC, thence....
TAKEOFF RUNWAY 19: Climb on heading 187° or as assigned by ATC, thence....
....for RADAR vectors to cross MALTB at or above 2200, then on track 094° to HOWE, then on (transition).
Maintain ATC assigned altitude, expect filed altitude 10 minutes after departure.
BROKK TRANSITION (HHOWE4.BROKK):
LINCON TRANSITION (HHOWE4.LINCON):

EC-1, 07 AUG 2025 to 04 SEP 2025