

(CLVIN3.CLVIN) 24137

CLVIN THREE DEPARTURE (RNAV)

AL-276 (FAA)

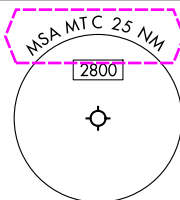
SELFRIIDGE ANGB (MTC)

MOUNT CLEMENS, MICHIGAN

**TOP ALTITUDE:
ASSIGNED BY ATC**

RNAV 1 - DME/DME/IRU or GPS.

RADAR required.



SELFRIIDGE DEP CON★
119.6 391.9
ATIS
125.325 270.1
CLNC DEL
128.3 275.8
GND CON
128.3 275.8
SELFRIIDGE TOWER★
120.15 225.4

007°
187°

TAKEOFF MINIMUMS:

Rwy 1: Standard.

Rwy 19: Standard with minimum climb
of 235' per NM to 1500.

NOTE: Turbojet departures at/above 10000,
maintain 280K until advised by ATC.

NOTE: Chart not to scale.

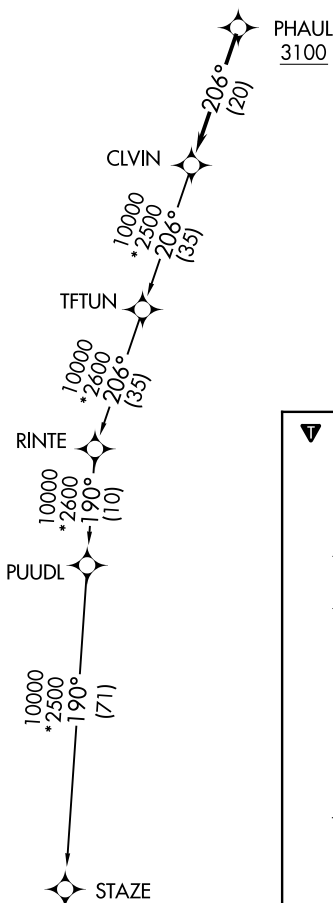
DEPARTURE ROUTE DESCRIPTION

TAKEOFF RUNWAY 1: Climb on heading 007° or as
assigned by ATC, thence....

TAKEOFF RUNWAY 19: Climb on heading 187° or as
assigned by ATC, thence....

....for RADAR vectors to cross PHAUL at or above 3100,
then on track 206° to CLVIN, then on (transition).
Maintain ATC assigned altitude, expect filed altitude
10 minutes after departure.

STAZE TRANSITION (CLVIN3.STAZE):



CLVIN THREE DEPARTURE (RNAV)

(CLVIN3.CLVIN) 16MAY24

MOUNT CLEMENS, MICHIGAN

SELFRIIDGE ANGB (MTC)

EC-1, 10 JUL 2025 to 07 AUG 2025

EC-1, 10 JUL 2025 to 07 AUG 2025

(CLVIN3.CLVIN) 25219

CLVIN THREE DEPARTURE (RNAV)

AL-276 (FAA)

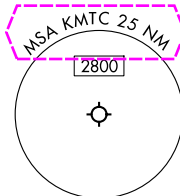
SELFRIIDGE ANGB (KMTC)

MOUNT CLEMENS, MICHIGAN

TOP ALTITUDE:
ASSIGNED BY ATC

RNAV 1 - DME/DME/IRU or GPS.

RADAR required.



SELFRIIDGE DEP CON★
119.6 391.9
ATIS
125.325 270.1
CLNC DEL
128.3 275.8
GND CON
128.3 275.8
SELFRIIDGE TOWER★
120.15 225.4



TAKEOFF MINIMUMS:

Rwy 1: Standard.

Rwy 19: Standard with minimum climb
of 235' per NM to 1500.

NOTE: Turbojet departures at/above 10000,
maintain 280K until advised by ATC.

NOTE: Chart not to scale.

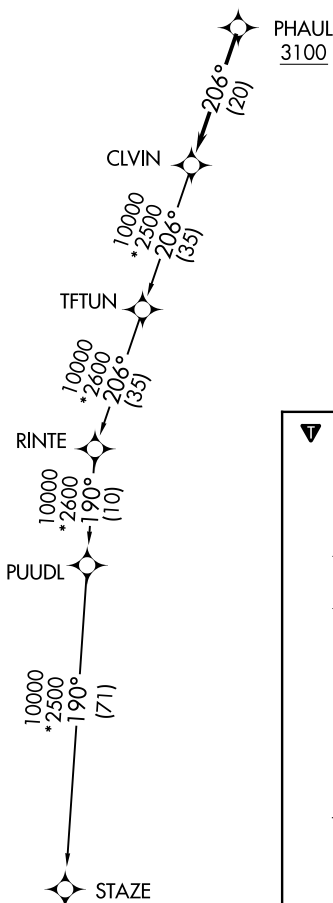
DEPARTURE ROUTE DESCRIPTION

TAKEOFF RUNWAY 1: Climb on heading 007° or as
assigned by ATC, thence....

TAKEOFF RUNWAY 19: Climb on heading 187° or as
assigned by ATC, thence....

....for RADAR vectors to cross PHAUL at or above 3100,
then on track 206° to CLVIN, then on (transition).
Maintain ATC assigned altitude, expect filed altitude
10 minutes after departure.

STAZE TRANSITION (CLVIN3.STAZE):



CLVIN THREE DEPARTURE (RNAV)

(CLVIN3.CLVIN) 16MAY24

MOUNT CLEMENS, MICHIGAN

SELFRIIDGE ANGB (KMTC)

EC-1, 07 AUG 2025 to 04 SEP 2025

EC-1, 07 AUG 2025 to 04 SEP 2025