

VOR/DME MSO <b>112.8</b> Chan <b>75</b>	APP CRS <b>339°</b>	Rwy Idg TDZE Apt Elev	<b>N/A</b> <b>N/A</b> <b>3206</b>
---	------------------------	-----------------------------	---

VOR-B

MISSOULA MONTANA (MSO)

RADAR required for procedure entry at JEPSN. DME required.

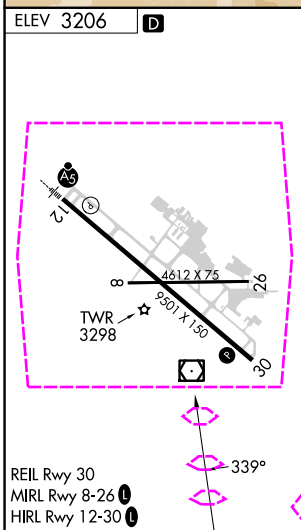
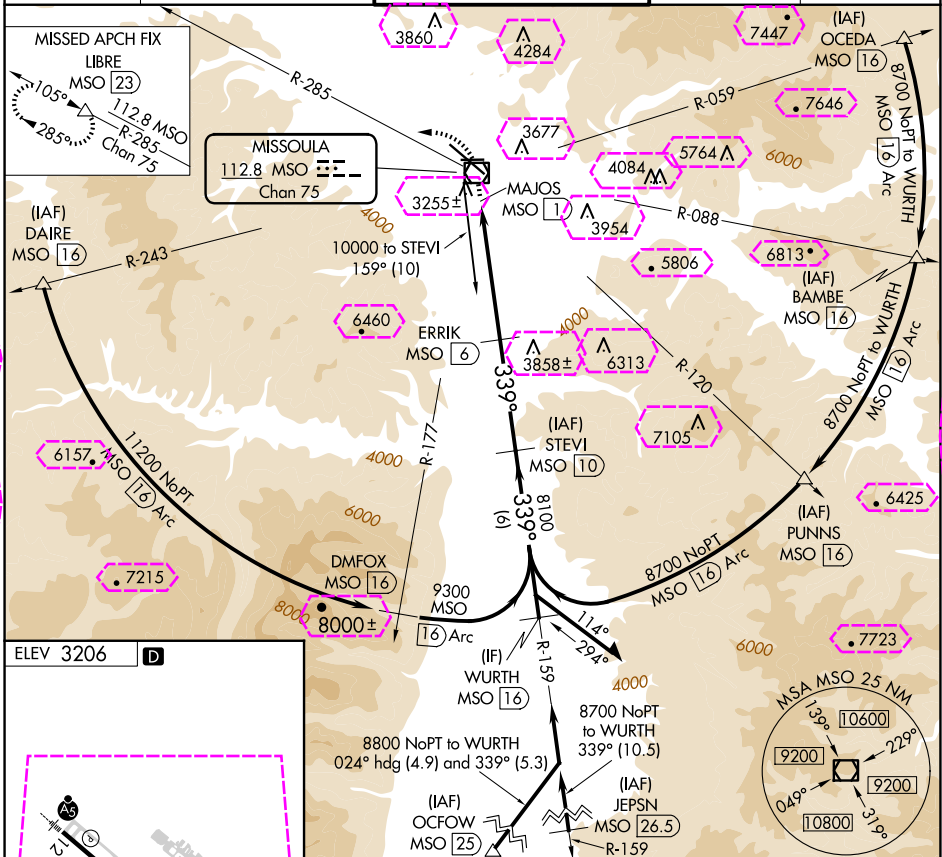
**MISSED APPROACH:** Climb to 9600 direct MSO VOR/DME and on MSO VOR/DME R-285 to LIBRE/MSO 23 DME and hold, continue climb-in-hold to 9600.

ATIS  
126.65

SPOKANE APP CON ★  
124.9 298.95

MISSOULA TOWER ★  
118.4 (CTAF) **L** 377.175

GND CON  
121.9



UNICOM  
122.95

MISSOULA, MONTANA  
Amdt 7 24MAY18

MISSOULA MONTANA (MSO)

VOR-B

46°55'N-114°05'W

9600 ↑	MSO ◻	MSO R-285	LIBRE △			
						
CATEGORY	A		B		C	D
<b>C</b> CIRCLING	4920-1¼ 1714 (1800-1¼)		4920-1½ 1714 (1800-1½)		4920-3 1714 (1800-3)	5160-3 1954 (2000-3)

VOR/DME MSO <b>112.8</b> Chan <b>75</b>	APP CRS <b>339°</b>	Rwy Ldg TDZE Apt Elev	<b>N/A</b> <b>N/A</b> <b>3206</b>
---	------------------------	-----------------------------	---

VOR-B

MISSOULA MONTANA (MSO)

RADAR required for procedure entry at JEPSN. DME required.

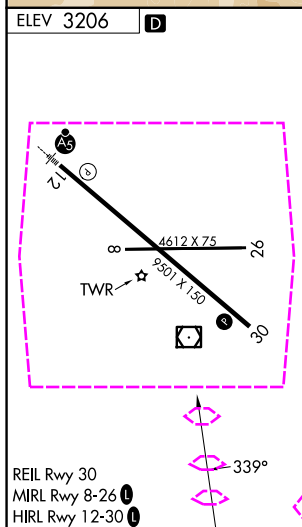
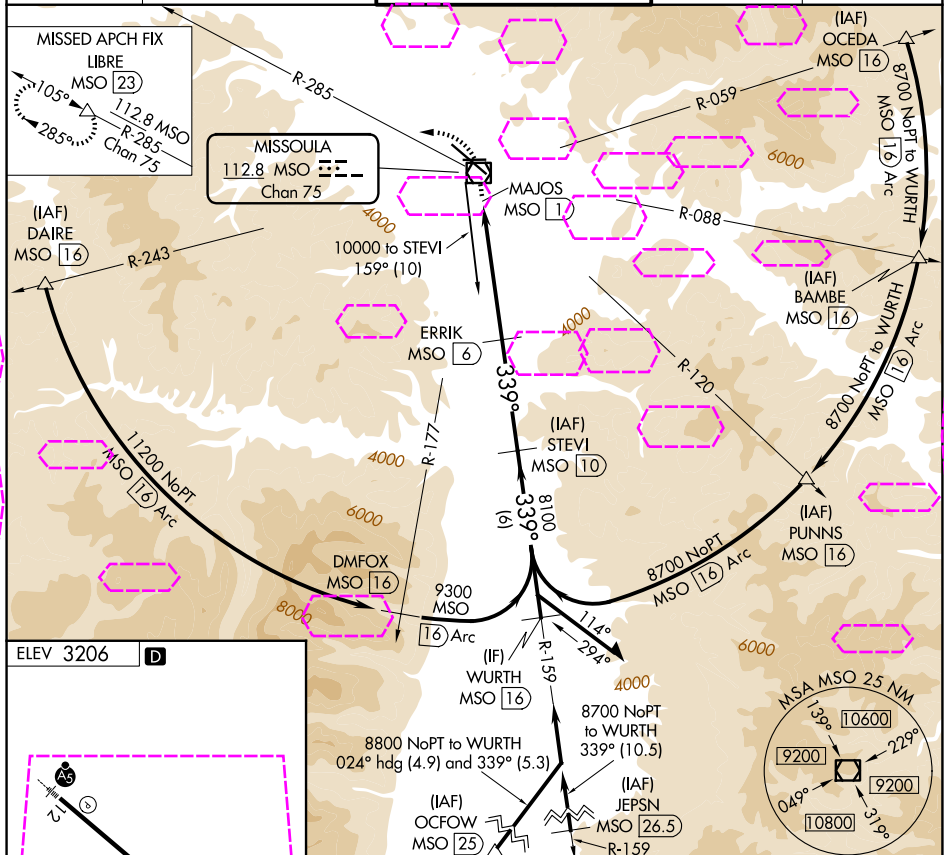
**MISSED APPROACH:** Climb to 9600 direct MSO VOR/DME and on MSO VOR/DME R-285 to LIBRE/MSO 23 DME and hold, continue climb-in-hold to 9600.

ATIS  
126.65

SPOKANE APP CON ★  
124.9 298.95

MISSOULA TOWER ★  
118.4 (CTAF) **L** 377.175

GND CON  
**121.9**

UNICOM  
122.95

MISSOULA, MONTANA  
Amdt 7 24MAY18

MISSOULA MONTANA (MSO)

VOR-B

46°55'N-114°05'W