

MISSOULA, MONTANA




AL-266 (FAA)

25107

WAAS CH <b>65715</b> <b>W12B</b>	APP CRS <b>117°</b>	Rwy Idg TDZE Apt Elev	<b>9501</b> <b>3200</b> <b>3206</b>
--	------------------------	-----------------------------	---

RNAV (GPS) Y RWY 12  
MISSOULA MONTANA (MSO)

RNP APCH.

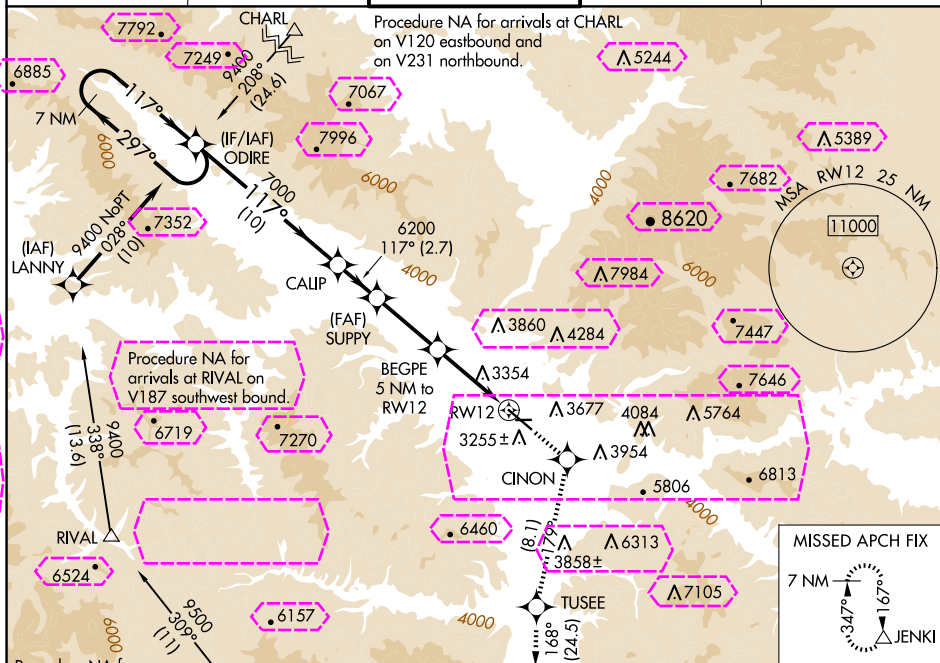
 Circling NA for Cats C and D northeast of Rwy 12-30. Inop  
 table does not apply to LNAV # Cats C/D. Inop table does  
 not apply to LPV † all Cats. \*\*RVR 1800 authorized with  
 use of FD or AP or HUD to DA.

MALS



**MISSED APPROACH:** (Do not exceed 200K until CINON) Climb to 12000 direct CINON and on track 179° to TUSEE and on track 168° to JENKI and hold, continue climb-in-hold to 12000. ## Missed approach requires minimum climb of 325 feet per NM to 7700.

ATIS <b>126.65</b>	SPOKANE APP CON ★ <b>124.9 298.95</b>	MISSOULA TOWER ★ <b>118.4 (CTAF) 0 377.175</b>	GND CON <b>121.9</b>	UNICOM <b>122.95</b>
-----------------------	--	---	-------------------------	-------------------------



Procedure NA for arrivals at JENKI on V231 southbound.

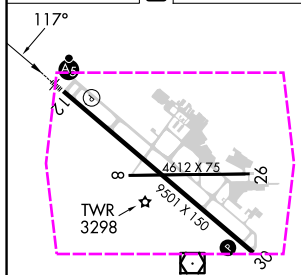
EHRAY

JENKI

11800  
309° (25)

7215

ELEV 3206	<b>D</b>	TDZE 3200
-----------	----------	-----------



REIL Rwy 30  
MIRL Rwy 8-26 **L**  
HIRL Rwy 12-30 **L**

7 NM Holding Pattern		ODIRE	CALIP	12000 ↑	CINON ✦	TUSEE tr 179°	JENKI tr 168° △
9400 ←297° 117°→		117°	7000	SUPPLY 6200	BEGPE 5 NM to RW12	*LNAV only	
GP 3.00° TCH 55		10 NM	2.7 NM	4.3 NM	3.8 NM	*1.2 NM to RW12	
CATEGORY	A	B	C	D			
LPV DA**	3400/24 200 (200-½)						
LPV DA†	4229-4 1029 (1100-4)						
LNAV MDA##	3640/24	440 (500-½)	3640/40	440 (500-¾)			
LNAV MDA#	4520/40 1320 (1400-¾)	4520/55 1320 (1400-1)	4520-3	1320 (1400-3)			
<b>C</b> CIRCLING	4520-1¼ 1314 (1400-1¼)	4700-1½ 1494 (1500-½)	4700-3 1494 (1500-3)	5140-3 1934 (2000-3)			

MISSOULA, MONTANA  
Amdt 3 24MAY18

46°55'N-114°05'W

MISSOULA MONTANA (MSO)  
RNAV (GPS) Y RWY 12

MISSOULA, MONTANA

AL-266 (FAA)

25219

WAAS CH <b>65715</b> <b>W12B</b>	APP CRS <b>117°</b>	Rwy Ldg TDZE Apt Elev	<b>9501</b> <b>3200</b> <b>3206</b>
--	------------------------	-----------------------------	---

# RNAV (GPS) Y RWY 12

MISSOULA MONTANA (MISO)

RNP APCH.

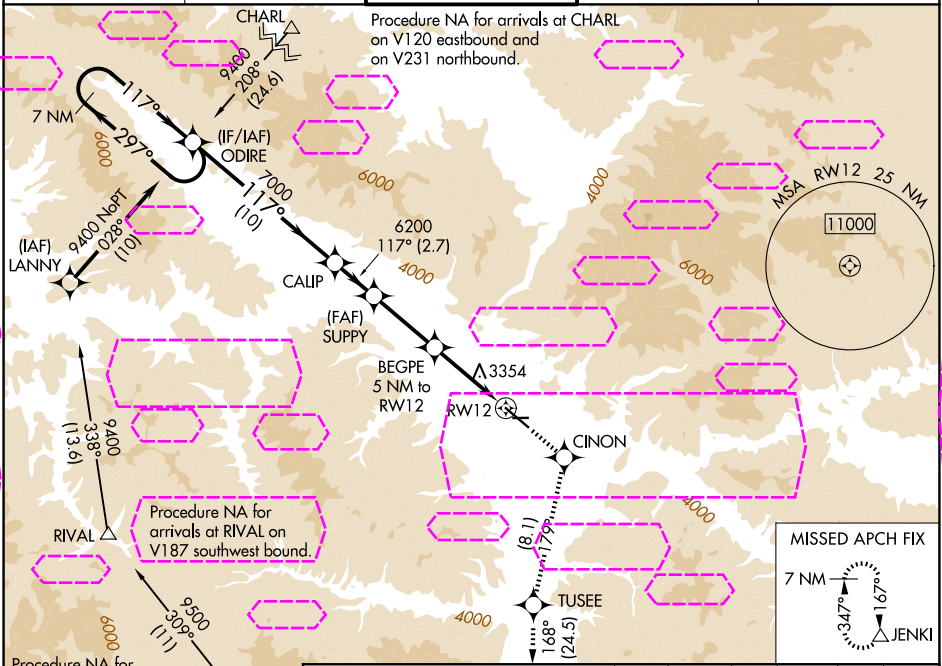
**⚠** Circling NA for Cats C and D northeast of Rwy 12-30. Inop table does not apply to LNAV # Cats C/D. Inop table does not apply to LPV † all Cats. \*\*RVR 1800 authorized with use of FD or AP or HUD to DA.

**⚠** **-11°**

MALSRL

MISSED APPROACH: (Do not exceed 200K until CINON) Climb to 12000 direct CINON and on track 179° to TUSEE and on track 168° to JENKI and hold, continue climb-in-hold to 12000. ## Missed approach requires minimum climb of 325 feet per NM to 7700.

ATIS <b>126.65</b>	SPOKANE APP CON * <b>124.9 298.95</b>	MISSOULA TOWER * <b>118.4 (CTAF) 0 377.175</b>	GND CON <b>121.9</b>	UNICOM <b>122.95</b>
-----------------------	--	---	-------------------------	-------------------------



ELEV 3206 **D** TDZE 3200

REIL Rwy 30  
MIRL Rwy 8-26 **1**  
HIRL Rwy 12-30 **1**

7 NM Holding Pattern

ODIRE

GP 3.00° TCH 55

9400 ← 297°  
117° →

7000

CALIP

SUPPLY

BEGPE 5 NM to RW12

\*4840

12000 CINON tr 179°

TUSEE tr 168°

JENKI △

\*LNAV only

\*1.2 NM to RW12

10 NM — 2.7 NM — 4.3 NM — 3.8 NM — 1.2 NM

CATEGORY	A	B	C	D
LPV DA **	3400/24	200 (200-1/2)		
LPV DA †	4229-4	1029 (1100-4)		
LNAV MDA ##	3640/24	440 (500-1/2)	3640/40	440 (500-3/4)
LNAV MDA #	4520/40 1320 (1400-3/4)	4520/55 1320 (1400-1)	4520-3	1320 (1400-3)
CIRCLING	4520-1 1/4 1314 (1400-1 1/4)	4700-1 1/2 1494 (1500-1 1/2)	4700-3	5140-3 1934 (2000-3)

MISSOULA, MONTANA  
Amdt 3 24MAY18

46°55'N-114°05'W

# MISSOULA MONTANA (MISO)

## RNAV (GPS) Y RWY 12

NW-1, 07 AUG 2025 to 04 SEP 2025

NW-1, 07 AUG 2025 to 04 SEP 2025