

MISSOULA, MONTANA

AL-266 (FAA)

25107

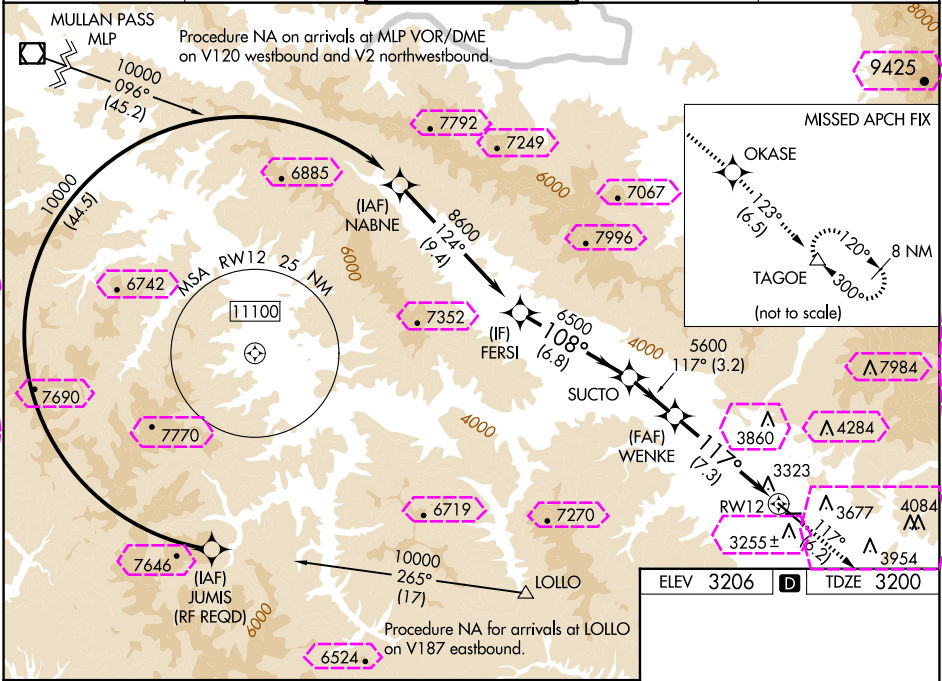
APP CRS	Rwy Idg	9501
117°	TDZE	3200
	Apt Elev	3206

# RNAV (RNP) Z RWY 12

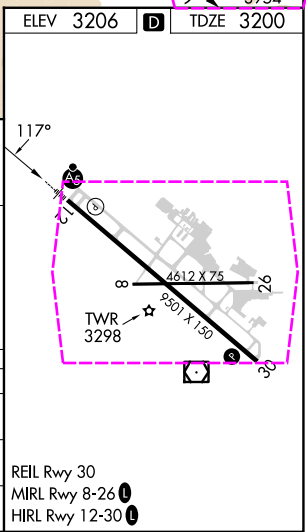
MISSOULA MONTANA (MISO)

RNP AR APCH.	MALS	MISSED APPROACH: Climb to 13000 on track 117° to OKASE and on track 123° to TAGOE and hold, continue climb-in-hold to 13000. *Missed approach requires minimum climb of 350 feet per NM to 8300; if unable to meet climb gradient, see RNAV (GPS) Y RWY 12. #Missed approach requires minimum climb of 425 feet per NM to 8300.
 -12°C		

ATIS 126.65	SPOKANE APP CON* 124.9 298.95	MISSOULA TOWER* 118.4 (CTAF) 0 377.175	GND CON 121.9	UNICOM 122.95
----------------	----------------------------------	---	------------------	------------------



VGSI and RNAV glidepath not coincident (VGSI Angle 3.00/TCH 55).		13000	OKASE	tr 123°	TAGOE
FERSI	SUCTO	WENKE	RWY12		
8600	6500	5600			
GP 3.00°	TCH 45				
6.8 NM		3.2 NM	7.3 NM		
CATEGORY	A	B	C	D	
RNP 0.12 DA#	3518/40		318 (400-¾)		
RNP 0.30 DA*	3880-2		680 (700-2)		
AUTHORIZATION REQUIRED					



MISSOULA, MONTANA  
Orig-D 24MAY18



46°55'N-114°05'W

# MISSOULA MONTANA (MISO) RNAV (RNP) Z RWY 12

## RNAV (RNP) Z RWY 12

MISSOULA MONTANA (MSO)

APP CRS <b>117°</b>	Rwy Ldg TDZE Apt Elev	<b>9501</b> <b>3200</b> <b>3206</b>
------------------------	-----------------------------	---

RNP AR APCH.		<div>MALSR</div> <div></div>	MISSED APPROACH: Climb to 13000 on track 117° to OKASE and on track 123° to TAGOE and hold, continue climb-in-hold to 13000. *Missed approach requires minimum climb of 350 feet per NM to 8300; if unable to meet climb gradient, see RNAV (GPS) Y RWY 12. #Missed approach requires minimum climb of 425 feet per NM to 8300.		
<div><div></div><div>For uncompensated Baro-VNAV systems, LNAV/VNAV NA below -21° C (-6°F) or above 43°C (109°F). For inop ALS, increase RNP 0.12 all Cats visibility to RVR 6000. For inop ALS, increase RNP 0.30 all Cats visibility to 2½ SM. When local weather not received, procedure NA.</div></div>					
ATIS 126.65	SPOKANE APP CON ★ 124.9 298.95	MISSOULA TOWER ★ 118.4 (CTAF) 0 377.175	GND CON 121.9	UNICOM 122.95	

