

APP CRS	Rwy Idg	<b>9501</b>
<b>298°</b>	TDZE	<b>3206</b>
	Apt Elev	<b>3206</b>

RNAV (RNP) RWY 30  
MISSOULA MONTANA (MSO)

RNP AR APCH. RF required.

**T** For uncompensated Baro-VNAV systems, procedure NA  
**A** below -21°C (-5°F) or above 43°C (109°F). When local  
**❄** -12°C altimeter setting not received, procedure NA.

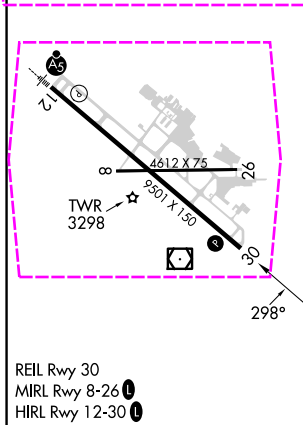
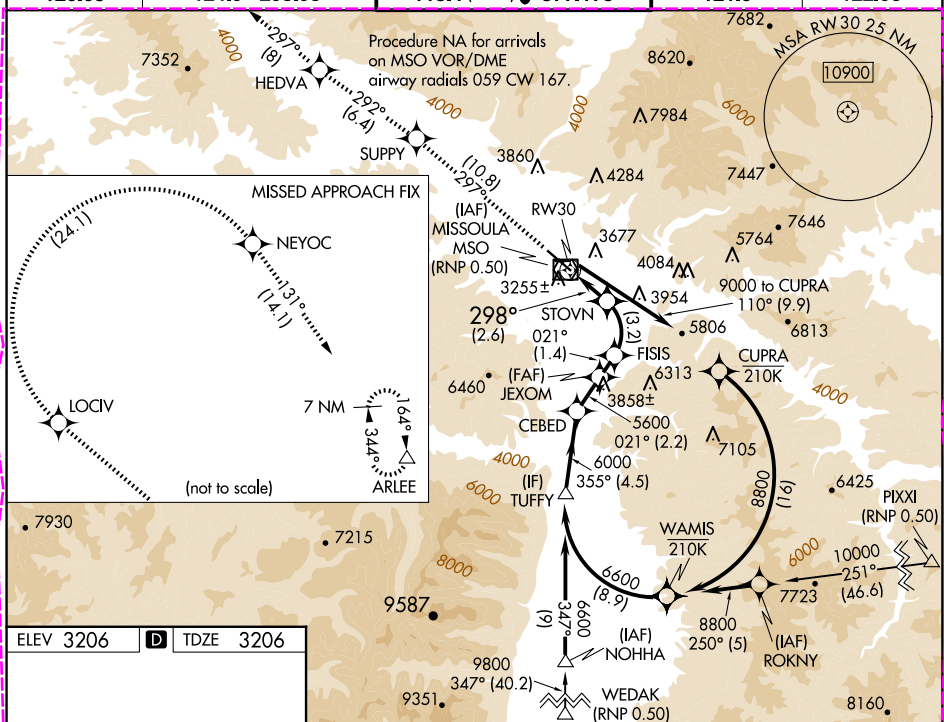
**MISSED APPROACH:** Climb to 11000 on track 297° to SUPPY and on track 292° to HEDVA and on track 297° to LOCIV, then right turn to NEYOC and on track 131° to ARLEE and hold. \*Missed approach requires minimum climb of 215 feet per NM to 5000.

ATIS	126.65
------	--------

SPOKANE APP CON ★  
124.9 298.95

MISSOULA TOWER ★  
118.4 (CTAF) **L** 377.175

GND CON  
**121.9**

UNICOM  
122.95

11000 ↑ fr 297°	SUPPLY ↑ fr 292°	HEDVA ↑ fr 292°				
CATEGORY	A	B	C	D		
RNP 0.30 DA *	3524-1 318 (400-1)					
RNP 0.30 DA	3582-1¼ 376 (400-1¼)					
<b>AUTHORIZATION REQUIRED</b>						

MISSOULA, MONTANA  
Orig-C 19JUL18

46°55'N-114°05'W

MISSOULA MONTANA (MSO)  
RNAV (RNP) RWY 30

APP CRS <b>298°</b>	Rwy Ldg <b>9501</b>
	TDZE <b>3206</b>
	Apt Elev <b>3206</b>

RNAV (RNP) RWY 30  
MISSOULA MONTANA (MSO)

RNP AR APCH. RF required.

For uncompensated Baro-VNAV systems, procedure NA below -21°C (-5°F) or above 43°C (109°F). When local altimeter setting not received, procedure NA.

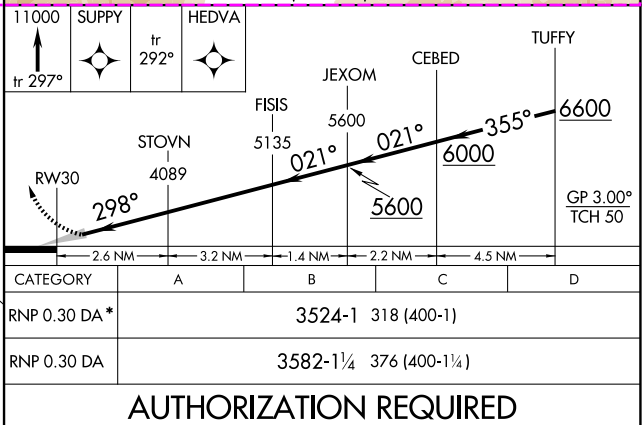
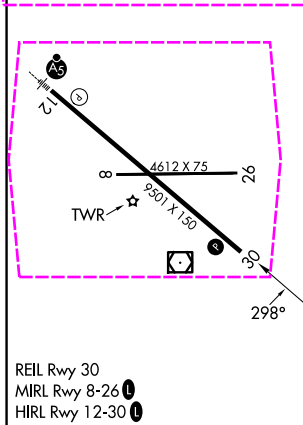
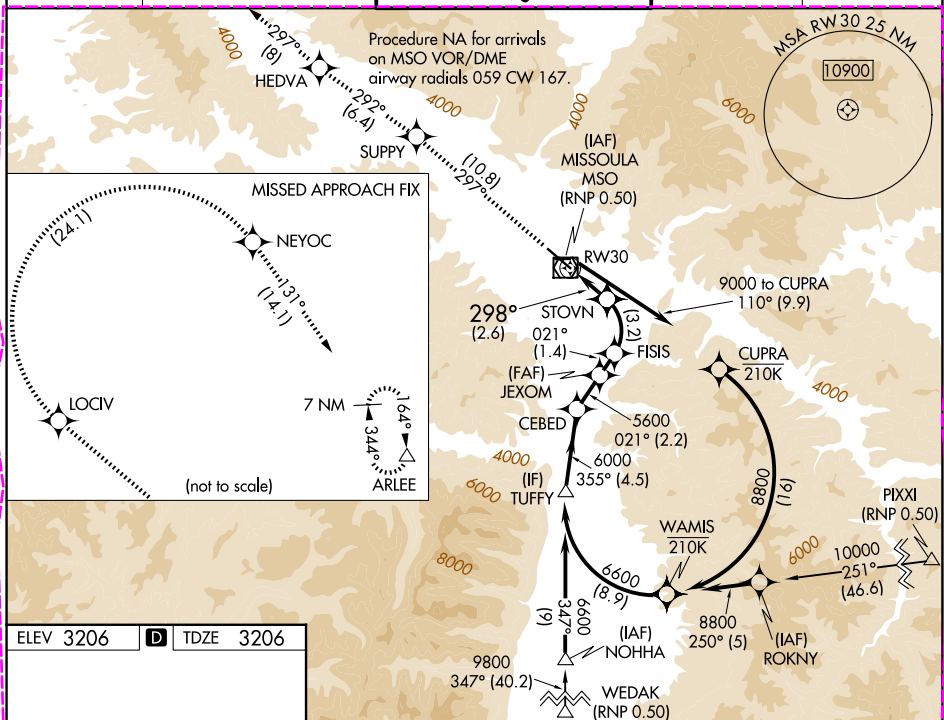
**MISSED APPROACH:** Climb to 11000 on track 297° to SUPPY and on track 292° to HEDVA and on track 297° to LOCIV, then right turn to NEYOC and on track 131° to ARLEE and hold. \*Missed approach requires minimum climb of 215 feet per NM to 5000.

ATIS  
126.65

SPOKANE APP CON ★  
124.9 298.95

MISSOULA TOWER ★  
118.4 (CTAF) 377-175

GND CON  
121.9

UNICOM  
122.95

MISSOULA, MONTANA  
Orig-C 19JUL18

46°55'N-114°05'W

MISSOULA MONTANA (MSO)  
RNAV (RNP) RWY 30

07 AUG 2025 to 04 SEP 2025

NW-1, 07 AUG 2025 to 04 SEP 2025