

MISSOULA, MONTANA

AL-266 (FAA)

25107

LOC I-MSO 109.3	APP CRS 117°	Rwy Idg TDZE Apt Elev	9501 3200 3206
---------------------------	------------------------	-----------------------------	---

ILS Z RWY 12
MISSOULA MONTANA (MSO)

DME required.



 -12°C

MALSR

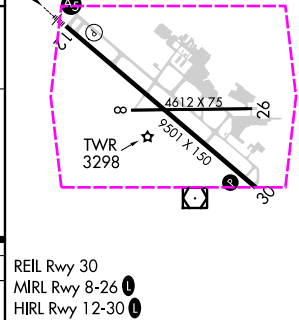
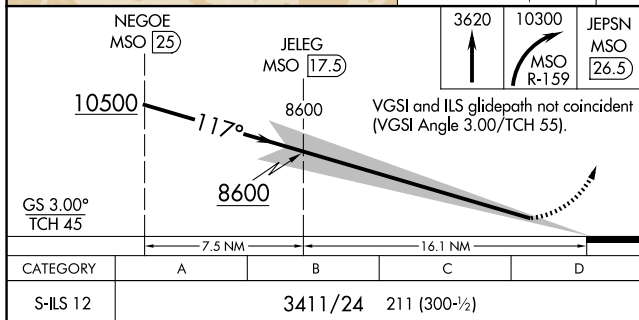
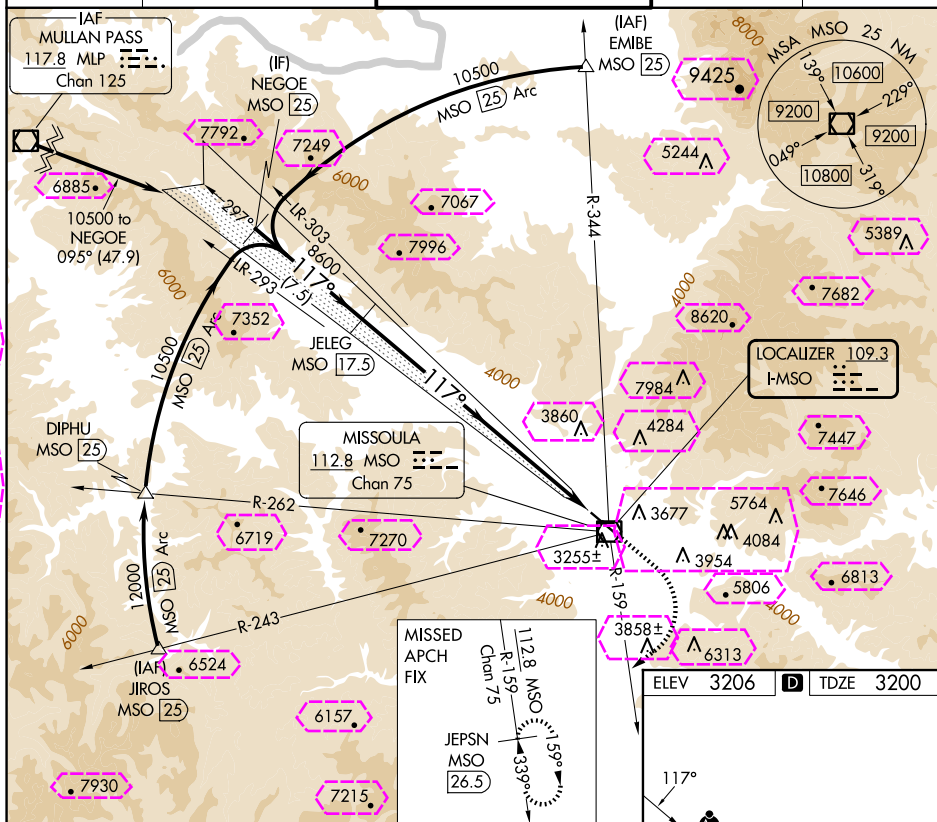
MISSED APPROACH: Climb to 3620 then climbing right turn to 10300 on MSO VOR/DME R-159 to JEPSN/MSO 26.5 DME and hold. Missed approach requires minimum climb of 410 feet per NM to 9800; if unable to meet climb gradient, see ILS Y RWY 12.

ATIS
126.65

SPOKANE APP CON ★
124.9 298.95

MISSOULA TOWER ★
118.4 (CTAF) 377.175

GND CON
121.9

UNICOM
122.95

MISSOULA, MONTANA
Amdt 12E 15AUG19

46°55'N-114°05'W

MISSOULA MONTANA (MSO)
ILS Z RWY 12

MISSOULA MONTANA (MSO)
ILS Z RWY 12