

ILS Y RWY 12

MISSOULA MONTANA (MSO)

LOC I-MSO 109.3	APP CRS 117°	Rwy Idg 9501 TDZE 3200 App Elev 3206
---------------------------	------------------------	---

DME required.

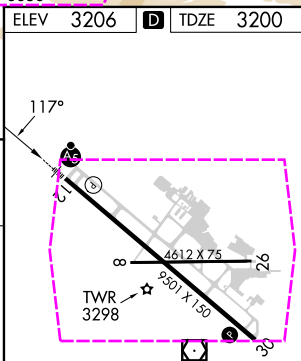
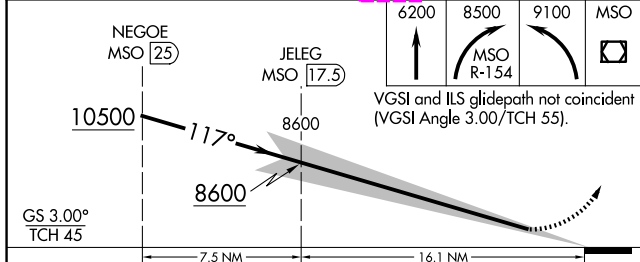
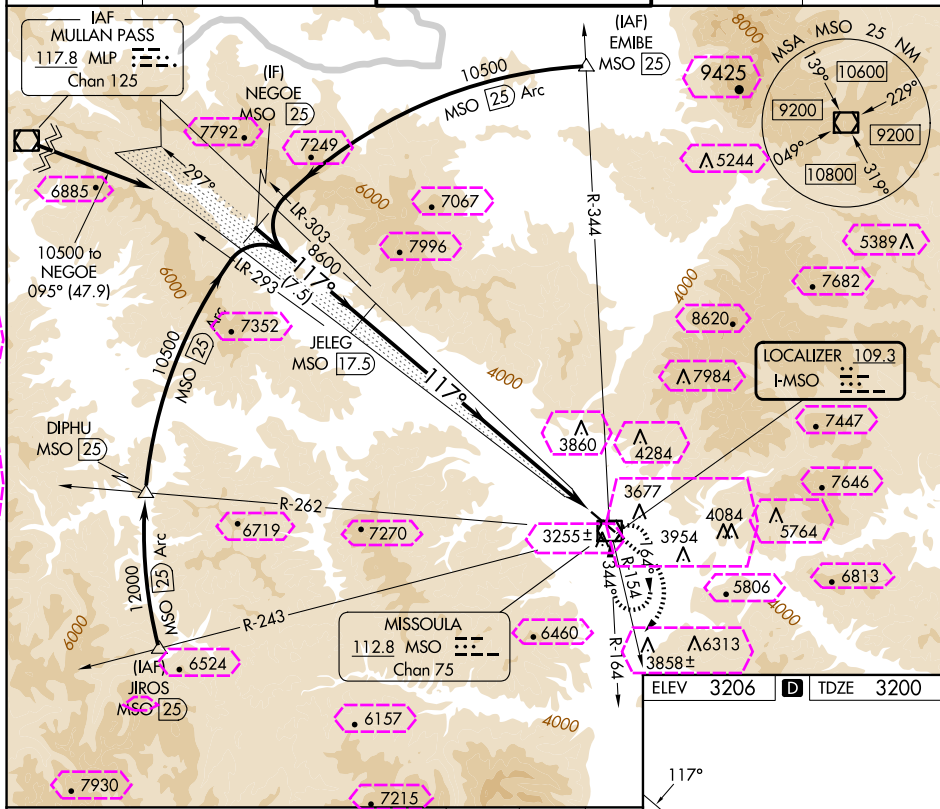


Inoperative table does not apply.



MISSED APPROACH: Climb to 6200 then climbing right turn to 8500 on MSO VOR/DME R-154 then climbing left turn to 9100 direct MSO VOR/DME and hold.

ATIS 126.65	SPOKANE APP CON ★ 124.9 298.95	MISSOULA TOWER ★ 118.4 (CTAF) 0 377.175	GND CON 121.9	UNICOM 122.95
-----------------------	--	---	-------------------------	-------------------------



CATEGORY	A	B	C	D
S-ILS 12	5022-7 1822 (1900-7)			

REIL Rwy 30
MIRL Rwy 8-26 **L**
HIRL Rwy 12-30 **L**

MISSOULA, MONTANA

AL-266 (FAA)

25219

LOC I-MSO 109.3	APP CRS 117°	Rwy Ldg TDZE App Elev	9501 3200 3206
---------------------------	------------------------	-----------------------------	---

ILS Y RWY 12
MISSOULA MONTANA (MSO)

DME required.



 NA



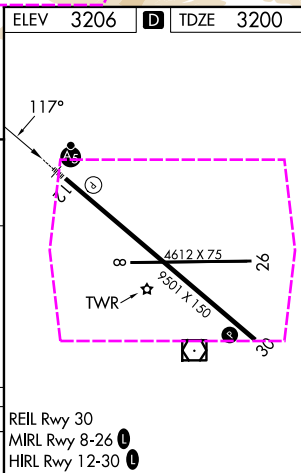
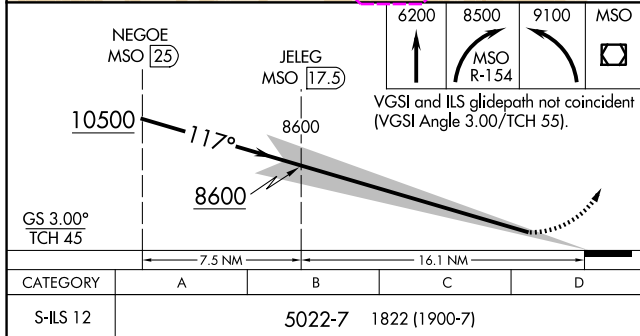
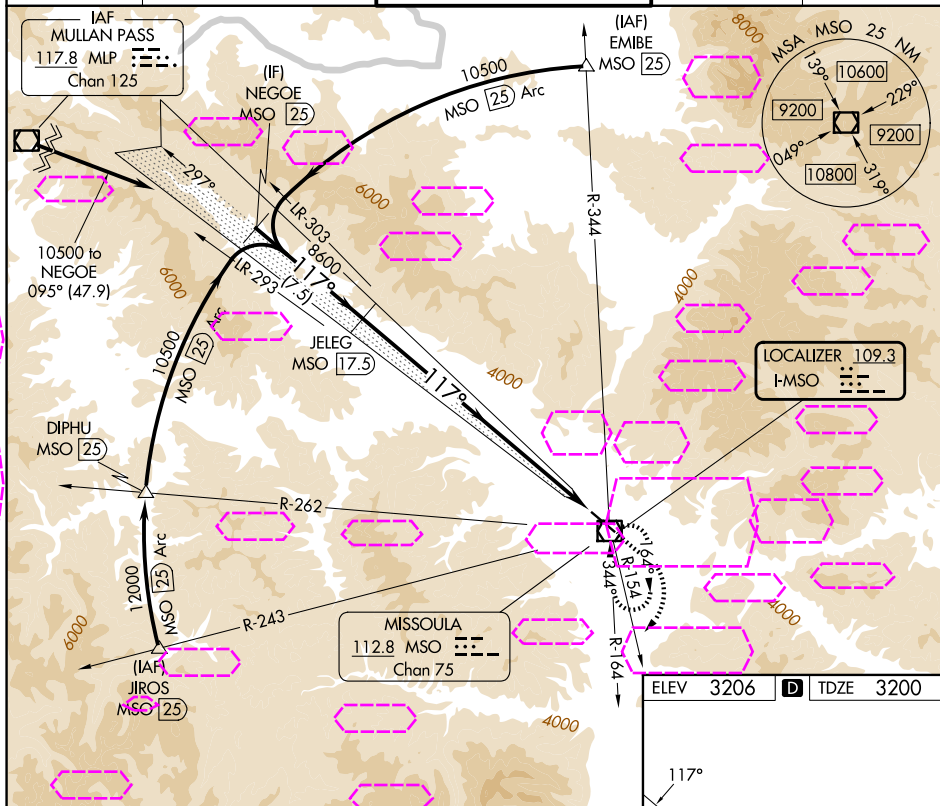
Inoperative table does not apply.

MALSR



MISSED APPROACH: Climb to 6200 then climbing right turn to 8500 on MSO VOR/DME R-154 then climbing left turn to 9100 direct MSO VOR/DME and hold.

ATIS 126.65	SPOKANE APP CON ★ 124.9 298.95	MISSOULA TOWER ★ 118.4 (CTAF) 0 377.175	GND CON 121.9	UNICOM 122.95
-----------------------	--	---	-------------------------	-------------------------



MISSOULA, MONTANA
Orig-C 24MAY18

46°55'N-114°05'W

MISSOULA MONTANA (MSO)
ILS Y RWY 12

NW-1, 07 AUG 2025 to 04 SEP 2025