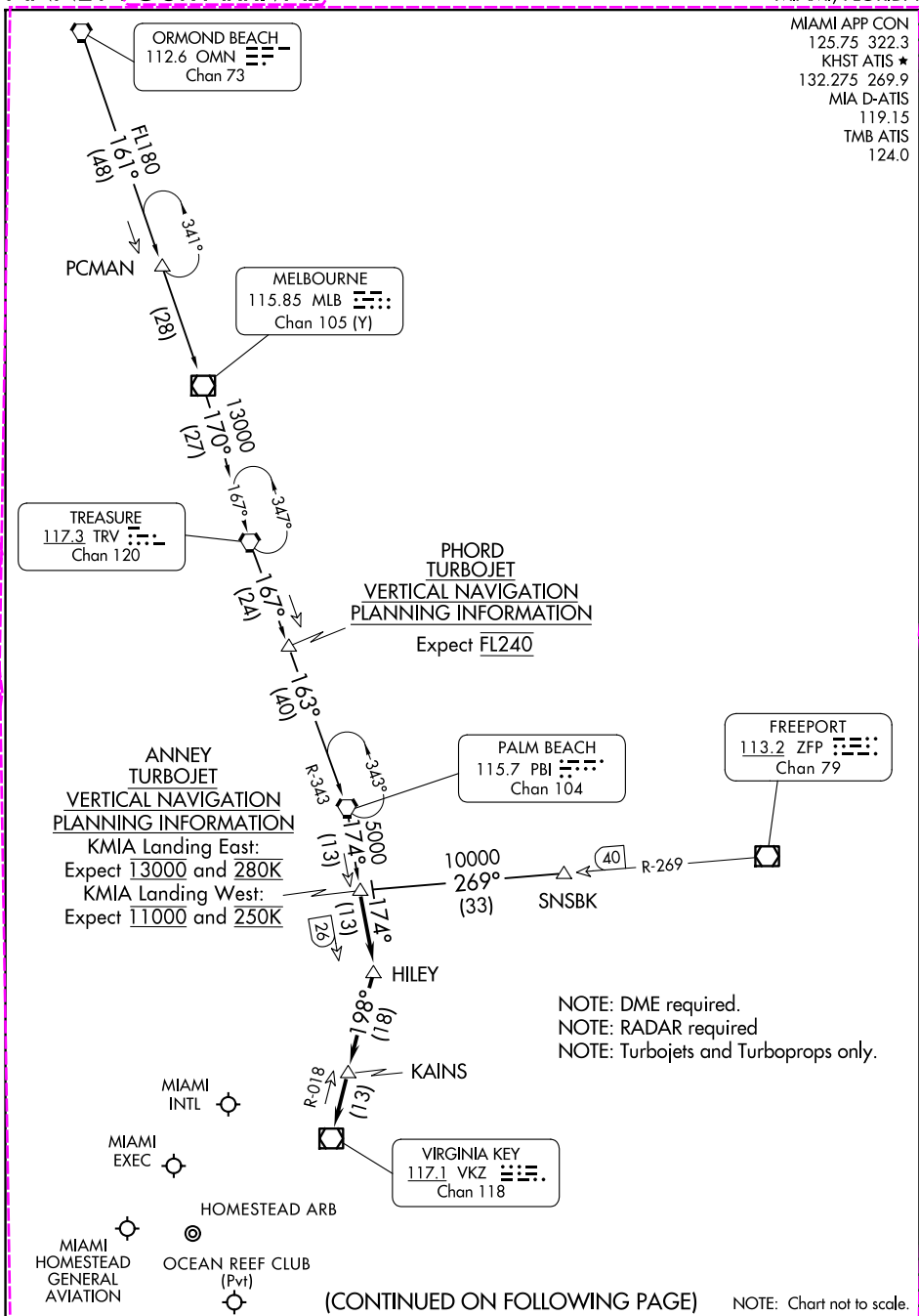


(ANNEY.ANNEY4) 24081

AL-257 (FAA)

ANNEY FOUR ARRIVAL

MIAMI, FLORIDA



SE-3, 10 JUL 2025 to 07 AUG 2025

ANNEY FOUR ARRIVAL

(ANNEY.ANNEY4) 07DEC17

MIAMI, FLORIDA

(ANNEY.ANNEY5) 25219

AL-257 (FAA)

ANNEY FIVE ARRIVAL

MIAMI, FLORIDA

RADAR required.
DME required.

MIAMI APP CON
125.75 322.3
KHST ATIS★
132.275 269.9
MIA D-ATIS
119.15
TMB ATIS
124.0

ORMOND BEACH
112.6 OMN
Chan 73

*F180
2100
161
(48)

PCMAN

*F180
2100
108
(28)

MELBOURNE
115.85 MLB
Chan 105 (Y)

*13000
2100
161
(511)

PHORD
VERTICAL NAVIGATION
PLANNING INFORMATION

Expect FL240

PALM BEACH
115.7 PBI
Chan 104

(40)
13000
2100
163
R343
343°
1500
174°
113
(113)

ANNEY
5000
VERTICAL NAVIGATION
PLANNING INFORMATION

MIA Landing East:
Expect 13000 and 280K
MIA Landing West:
Expect 11000 and 250K

5000
174°
113
(26)
5000
174°
113
(81)
0005
174°
113
(131)
R-08

NOTE: Jet and Turboprop aircraft only.

MIAMI EXEC
MIAMI INTL
MIAMI HOMESTEAD GENERAL AVIATION
HOMESTEAD ARB
OCEAN REEF CLUB (Pvt)

VIRGINIA KEY
117.1 VKZ
Chan 118

NOTE: Chart not to scale.

(CONTINUED ON FOLLOWING PAGE)

ANNEY FIVE ARRIVAL

(ANNEY.ANNEY5) 07AUG25

MIAMI, FLORIDA

SE-3, 07 AUG 2025 to 04 SEP 2025