

MIAMI, FLORIDA

AL-256 (FAA)

25219

WAAS CH 53422 W09A	APP CRS 093°	Rwy Ldg TDZE Apt Elev	8002 8 8
--	------------------------	-----------------------------	-------------------------------------

RNAV (GPS) RWY 9L

MIAMI-OPA LOCKA EXEC (OPF)

RNP APCH - GPS.

- ▼ For uncompensated Baro-VNAV systems, LNAV/VNAV NA below 8°C or above 54°C. Rwy 9L helicopter visibility reduction below $\frac{3}{4}$ SM NA. Inop table does not apply to LPV all Cats. For inop ALS, increase LNAV/VNAV all Cats and LNAV Cats A and B visibility to 1 SM, and LNAV Cats C and D visibility to $\frac{1}{2}$ SM. Caution: Lights on highway 0.7 NM north may be mistaken for runway.

MALSR

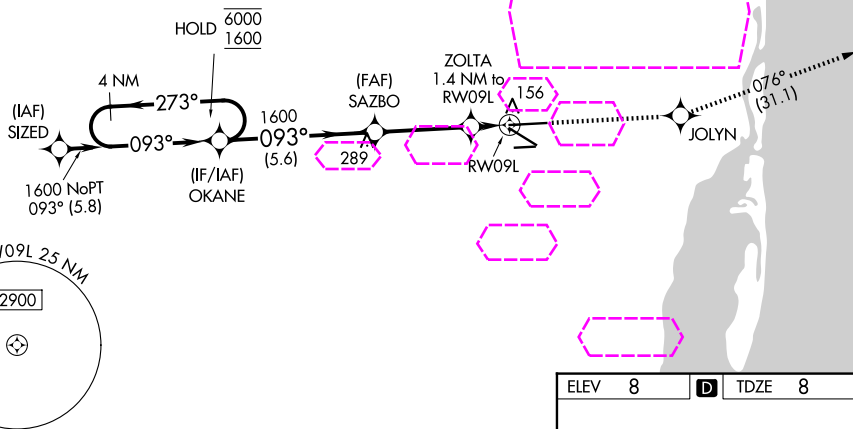


MISSED APPROACH: Climb to 2000 direct JOLYN and on 076° track to JANUS and hold.

ATIS 125.9	MIAMI APP CON 128.6 306.975	OPA LOCKA TOWER ★ 134.675 (CTAF) 0	GND CON 120.025	CLNC DEL 119.2	GCO 119.45
----------------------	---------------------------------------	--	---------------------------	--------------------------	----------------------

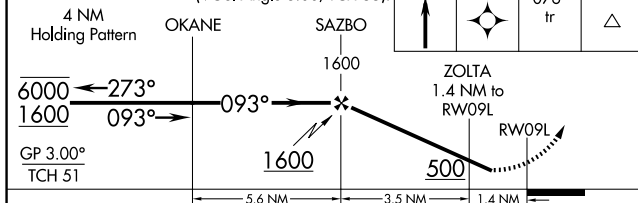
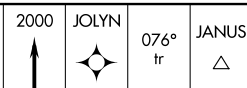
MISSED APCH FIX

JANUS

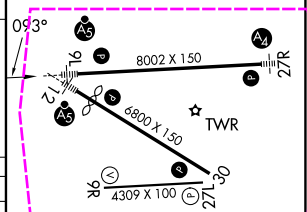


ELEV 8 D TDZE 8

VGSI and RNAV glidepath not coincident (VGSI Angle 3.00/TCH 55).



CATEGORY	A	B	C	D
LPV DA		258- $\frac{3}{4}$	250 (300- $\frac{3}{4}$)	
LNAV/VNAV DA		337- $\frac{3}{4}$	329 (400- $\frac{3}{4}$)	
LNAV MDA		420- $\frac{3}{4}$	412 (500- $\frac{3}{4}$)	
CIRCLING	480-1 472 (500-1)	520-1 512 (600-1)	620-1 $\frac{3}{4}$ 612 (700-1 $\frac{3}{4}$)	740-2 $\frac{1}{4}$ 732 (800-2 $\frac{1}{4}$)



MIRL Rwy 9R-27L
HIRL Rws 9L-27R and 12-30 0

MIAMI, FLORIDA
Amdt 1 12JUN25

25°54'N-80°17'W

MIAMI-OPA LOCKA EXEC (OPF)
RNAV (GPS) RWY 9L

SE-3, 07 AUG 2025 to 04 SEP 2025

SE-3, 07 AUG 2025 to 04 SEP 2025