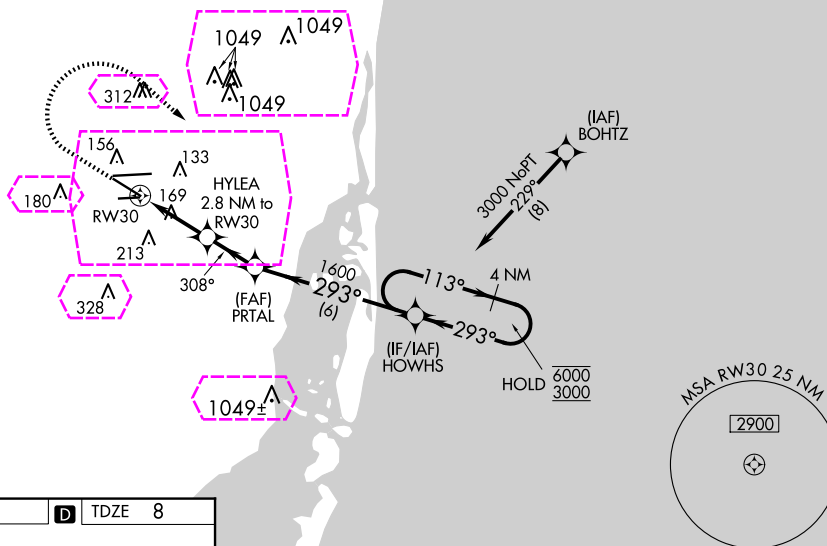


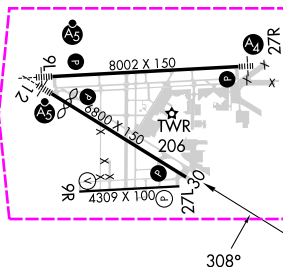
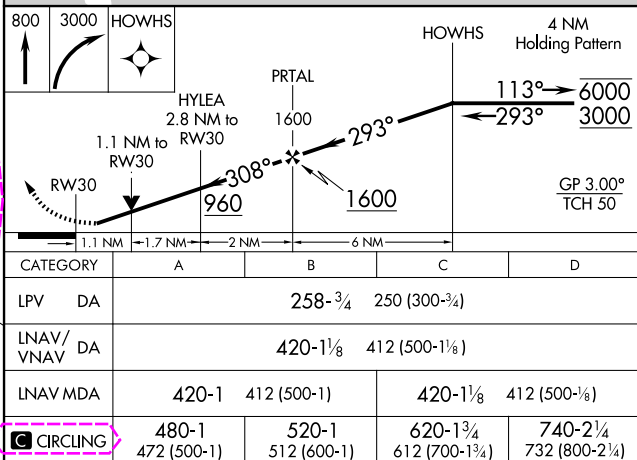
RNAV (GPS) RWY 30
MIAMI-OPA LOCKA EXEC (OPF)

MISSED APPROACH: Climb to 800 then climbing right turn to 3000 direct HOWHS and hold, continue climb-in-hold to 3000.

ATIS 125.9	MIAMI APP CON 128.6 306.975	OPA LOCKA TOWER ★ 134.675 (CTAF) 0	GND CON 120.025	CLNC DEL 119.2	GCO 119.45
---------------	--------------------------------	---------------------------------------	--------------------	-------------------	---------------



ELEV	8	D	TDZE	8
------	---	----------	------	---

HIRL Rwy 9L-27R and 12-30 **L**

MIAMI-OPA LOCKA EXEC (OPF)
RNAV (GPS) RWY 30

25°54'N-80°17'W

MIAMI, FLORIDA

AL-256 (FAA)

25219

WAAS CH 53644 W30A	APP CRS 308°	Rwy Ldg TDZE 8 Apt Elev 8
--	------------------------	---

RNAV (GPS) RWY 30

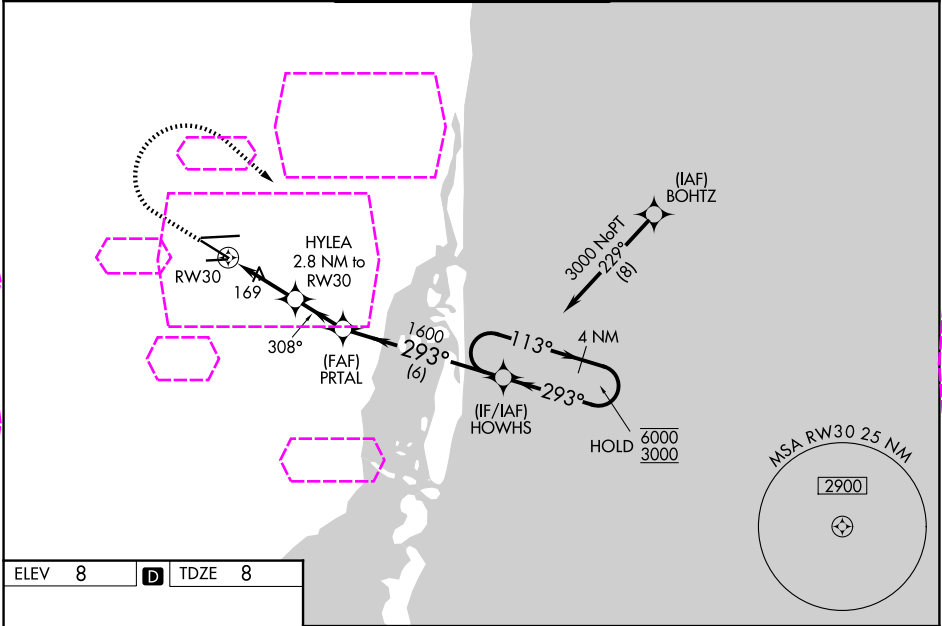
MIAMI-OPA LOCKA EXEC (OPF)

RNP APCH - GPS.

⚠ Baro-VNAV and VDP NA when using Miami Intl altimeter setting.
⚠ Rwy 30 helicopter visibility reduction below $\frac{3}{4}$ SM NA. For uncompensated Baro-VNAV systems, LNAV/VNAV NA below 7°C or above 54°C. When local altimeter setting not received, use Miami Intl altimeter setting: increase LPV DA to 276 feet and all visibilities $\frac{1}{8}$ SM; increase LNAV/VNAV DA to 438 feet and all visibilities $\frac{1}{8}$ SM; increase all MDAs 20 feet and LNAV visibility Cat C/D $\frac{1}{8}$ SM and Circling visibility Cat D $\frac{1}{4}$ SM.

MISSED APPROACH: Climb to 800 then climbing right turn to 3000 direct HOWHS and hold, continue climb-in-hold to 3000.

ATIS 125.9	MIAMI APP CON 128.6 306.975	OPA LOCKA TOWER ★ 134.675 (CTAF) 0	GND CON 120.025	CLNC DEL 119.2	GCO 119.45
----------------------	---------------------------------------	--	---------------------------	--------------------------	----------------------



ELEV 8	D	TDZE 8
---------------	----------	---------------

800	3000	HOWHS	4 NM Holding Pattern	
↑	↷	★		
HYLEA 2.8 NM to RW30		PRTAL 1600	HOWHS	
1.1 NM to RW30		293°	113° → 6000	
RW30		308°	← 293° 3000	
1.1 NM		1.7 NM	2 NM	6 NM
CATEGORY	A	B	C	D
LPV DA	258- $\frac{3}{4}$		250 (300- $\frac{3}{4}$)	
LNAV/VNAV DA	420-1 $\frac{1}{8}$		412 (500-1 $\frac{1}{8}$)	
LNAV MDA	420-1	412 (500-1)	420-1 $\frac{1}{8}$	412 (500- $\frac{1}{8}$)
CIRCLING	480-1 472 (500-1)	520-1 512 (600-1)	620-1 $\frac{3}{4}$ 612 (700-1 $\frac{3}{4}$)	740-2 $\frac{1}{4}$ 732 (800-2 $\frac{1}{4}$)

MIRL Rwy 9R-27L
HIRL Rwy 9L-27R and 12-30 **0**

GP 3.00°
TCH 50

MIAMI, FLORIDA
Orig 03NOV22

25°54'N-80°17'W

MIAMI-OPA LOCKA EXEC (OPF)
RNAV (GPS) RWY 30

SE-3, 07 AUG 2025 to 04 SEP 2025

SE-3, 07 AUG 2025 to 04 SEP 2025