

MIAMI, FLORIDA

AL-256 (FAA)

24193

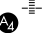
WAAS CH <b>62922</b> <b>W27A</b>	APP CRS <b>273°</b>	Rwy Idg <b>8002</b> TDZE <b>8</b> Apt Elev <b>8</b>
--	------------------------	---

# RNAV (GPS) RWY 27R

MIAMI-OPA LOCKA EXEC (OPF)

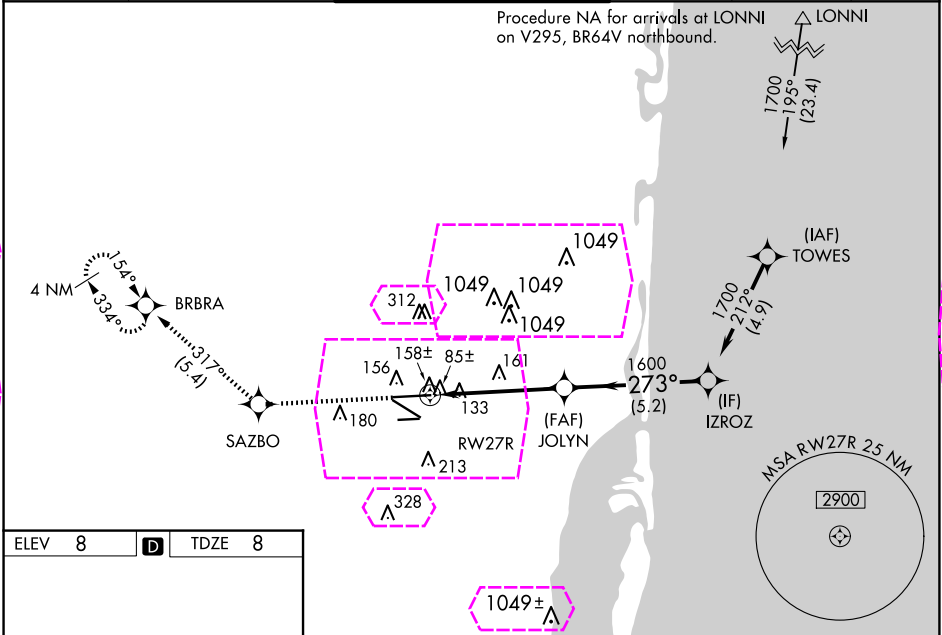
RNP APCH - GPS.

**T** Baro-VNAV NA when using Miami Intl altimeter setting. For uncompensated Baro-VNAV systems, LNAV/VNAV NA below 5°C or above 54°C. When local altimeter setting not received, use Miami Intl altimeter setting and increase all DA/MDA 20 feet and Circling Cat D visibility ¼ SM. For inop ALS, increase LPV all Cats visibility to ½ SM, LNAV/VNAV all Cats to 1½ SM, and LNAV Cats C and D visibility to 1½ SM. Rwy 27R helicopter visibility reduction below ¾ SM NA.

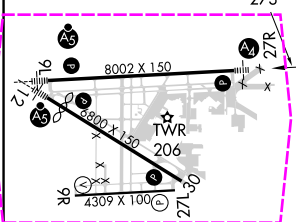
MALS  


MISSED APPROACH: Climb to 2000 direct SAZBO and on track 317° to BRBRA and hold.

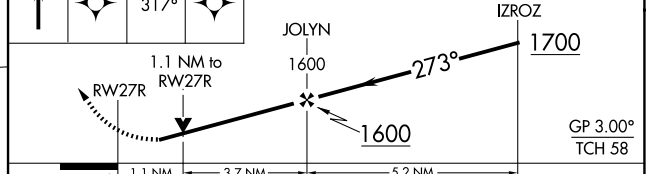
ATIS <b>125.9</b>	MIAMI APP CON <b>128.6 306.975</b>	OPA LOCKA TOWER ★ <b>134.675 (CTAF) 0</b>	GND CON <b>120.025</b>	CLNC DEL <b>119.2</b>	GCO <b>119.45</b>
----------------------	---------------------------------------	--	---------------------------	--------------------------	----------------------



ELEV 8	<b>D</b>	TDZE 8
--------	----------	--------



2000	SAZBO	tr 317°	BRBRA
------	-------	---------	-------



CATEGORY	A	B	C	D
LPV DA		291-¾	283 (300-¾)	
LNAV/VNAV DA		413-1	405 (500-1)	
LNAV MDA	420-¾	412 (500-¾)	420-1	412 (500-1)
CIRCLING	540-1	532 (600-1)	620-1¾ 612 (700-1¾)	740-2¼ 732 (800-2¼)

MIRL Rwy 9R-27L  
HIRL Rwys 9L-27R and 12-30 **L**

MIAMI, FLORIDA  
Orig-E 11JUL24

25°54'N-80°17'W

# RNAV (GPS) RWY 27R

MIAMI-OPA LOCKA EXEC (OPF)

SE-3, 10 JUL 2025 to 07 AUG 2025

SE-3, 10 JUL 2025 to 07 AUG 2025

MIAMI, FLORIDA

AL-256 (FAA)

25219

WAAS CH <b>62922</b> <b>W27A</b>	APP CRS <b>273°</b>	Rwy Ldg <b>8002</b> TDZE <b>8</b> Apt Elev <b>8</b>
--	------------------------	---


# RNAV (GPS) RWY 27R

MIAMI-OPA LOCKA EXEC (OPF)

RNP APCH - GPS.

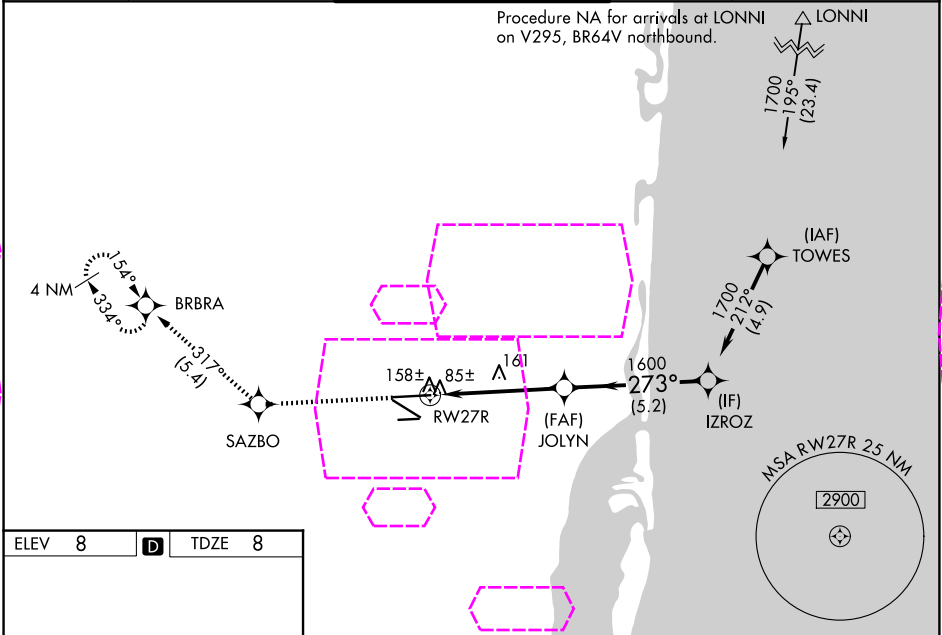
**T** Baro-VNAV NA when using Miami Intl altimeter setting. For uncompensated Baro-VNAV systems, LNAV/VNAV NA below 5°C or above 54°C.

**A** When local altimeter setting not received, use Miami Intl altimeter setting and increase all DA/MDA 20 feet and Circling Cat D visibility ¼ SM. For inop ALS, increase LPV all Cats visibility to ½ SM, LNAV/VNAV all Cats to 1½ SM, and LNAV Cats C and D visibility to 1½ SM. Rwy 27R helicopter visibility reduction below ¾ SM NA.

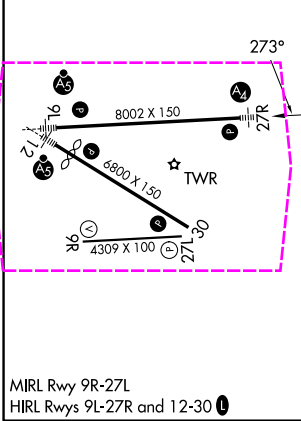
MALS  


MISSED APPROACH: Climb to 2000 direct SAZBO and on track 317° to BRBRA and hold.

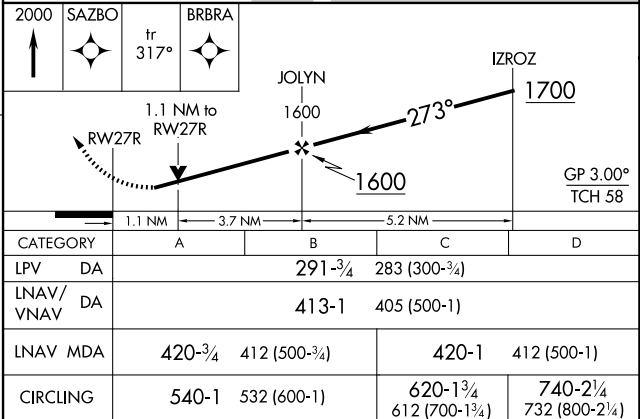
ATIS <b>125.9</b>	MIAMI APP CON <b>128.6 306.975</b>	OPA LOCKA TOWER ★ <b>134.675 (CTAF) 0</b>	GND CON <b>120.025</b>	CLNC DEL <b>119.2</b>	GCO <b>119.45</b>
----------------------	---------------------------------------	--	---------------------------	--------------------------	----------------------



ELEV 8	D	TDZE 8
--------	---	--------



MIRL Rwy 9R-27L  
HIRL Rwy 9L-27R and 12-30

2000	SAZBO	tr 317°	BRBRA	
				
CATEGORY	A	B	C	D
LPV DA	291-¾		283 (300-¾)	
LNAV/ VNAV	DA	413-1	405 (500-1)	
LNAV MDA	420-¾	412 (500-¾)	420-1	412 (500-1)
CIRCLING	540-1	532 (600-1)	620-1¾ 612 (700-1¾)	740-2¼ 732 (800-2¼)