

ILS or LOC RWY 9L  
MIAMI-OPA LOCKA EXEC(OPF)

RADAR required.

**⚠** Inop table does not apply to S-ILS 9L all Cats. Rwy 9L helicopter visibility reduction below  $\frac{3}{4}$  SM NA. For inop ALS, increase S-LOC 9L Cats A and B visibility to 1 SM and Cats C and D visibility to  $1\frac{1}{2}$  SM. ZOLTA Fix Minimums, for inop ALS, increase S-LOC 9L all Cats visibility to 1 SM. Autopilot coupled approach NA below 400 feet. Caution: Lights on highway 0.7 NM north may be mistaken for runway.

MALSR



**MISSED APPROACH:** Climb to 2000 on heading 093° and DHP VORTAC R-069 to JANUS INT/DHP 42.5 DME and hold.

ATIS  
**125.9**

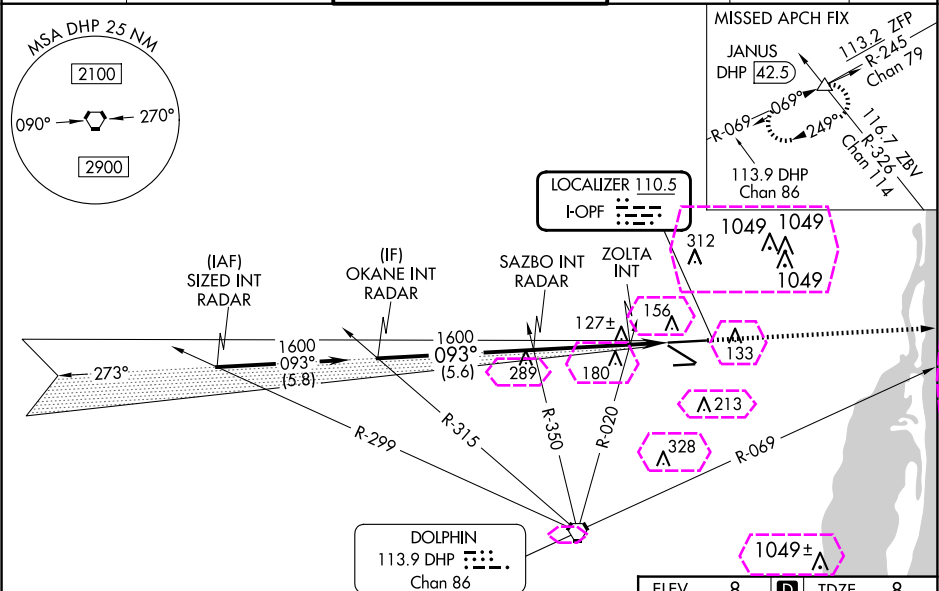
MIAMI APP CON  
128.6 306,975

OPA LOCKA TOWER ★  
134.675 (CTAF) L

GND CON  
**120,025**

CLNC DE  
119.2

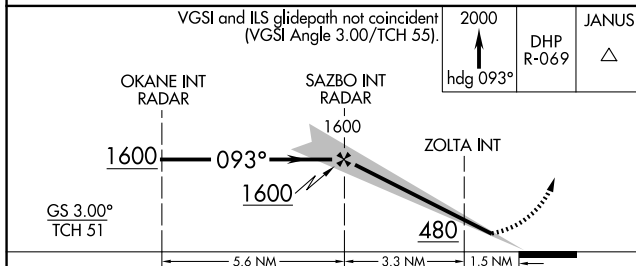
GCO  
119.45



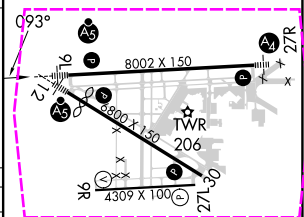
VGSI and ILS glidepath not coincident  
(VGSI Angle 3.00/TCH 55).

2000

DHP	JANUS
-----	-------



CATEGORY	A	B	C	D
S-ILS 9L	258- <sup>3</sup> / <sub>4</sub>		250 (300- <sup>3</sup> / <sub>4</sub> )	
S-LOC 9L	480- <sup>3</sup> / <sub>4</sub>	472 (500- <sup>3</sup> / <sub>4</sub> )	480-1	472 (500-1)
CIRCLING	480-1 472 (500-1)	520-1 512 (600-1)	620-1 <sup>3</sup> / <sub>4</sub> 612 (700-1 <sup>3</sup> / <sub>4</sub> )	740-2 <sup>1</sup> / <sub>4</sub> 732 (800-2 <sup>1</sup> / <sub>4</sub> )
ZOLTA FIX MINIMUMS				
S-LOC 9L	380- <sup>3</sup> / <sub>4</sub>		372 (400- <sup>3</sup> / <sub>4</sub> )	
CIRCLING	480-1 472 (500-1)	520-1 512 (600-1)	620-1 <sup>3</sup> / <sub>4</sub> 612 (700-1 <sup>3</sup> / <sub>4</sub> )	740-2 <sup>1</sup> / <sub>4</sub> 732 (800-2 <sup>1</sup> / <sub>4</sub> )



MIRL Rwy 9R-27L

HIRL Rwy 9L-27R and 12-30 **L**

FAF to MAP 4.8 NM

Knots	60	90	120	150	180
Min:Sec	4:48	3:12	2:24	1:55	1:36

MIAMI, FLORIDA  
Amdt 6 12JUN25

25°54'N-80°17'W

MIAMI-OPA LOCKA EXEC (OPF)  
ILS or LOC RWY 9L

SE-3, 10 JUL 2025 to 07 AUG 2025

SE-3, 10 JUL 2025 to 07 AUG 2025

MIAMI, FLORIDA


AL-256 (FAA)

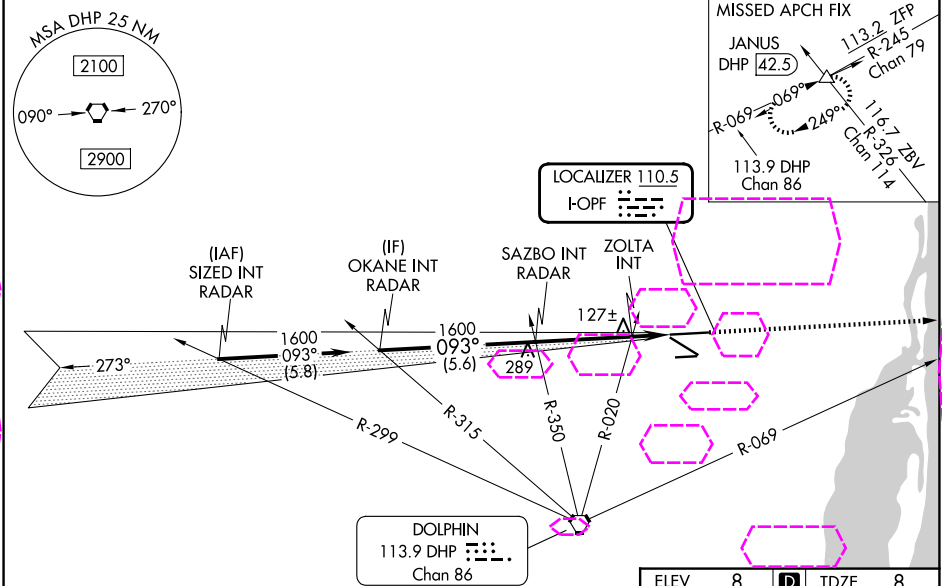
25219

LOC I-OPF <b>110.5</b>	APP CRS <b>093°</b>	Rwy Ldg TDZE Apt Elev <b>8002</b> <b>8</b> <b>8</b>
---------------------------	------------------------	--

# ILS or LOC RWY 9L

MIAMI-OPA LOCKA EXEC (OPF)

RADAR required.			<div>MALSR</div> <div></div>	MISSED APPROACH: Climb to 2000 on heading 093° and DHP VORTAC R-069 to JANUS INT/DHP 42.5 DME and hold.	
<div><div><div>T</div><div>A</div></div><div>Inop table does not apply to S-ILS 9L all Cats. Rwy 9L helicopter visibility reduction below ¾ SM NA. For inop ALS, increase S-LOC 9L Cats A and B visibility to 1 SM and Cats C and D visibility to 1 ½ SM. ZOLTA Fix Minimums, for inop ALS, increase S-LOC 9L all Cats visibility to 1 SM. Autopilot coupled approach NA below 400 feet. Caution: Lights on highway 0.7 NM north may be mistaken for runway.</div></div>					
ATIS 125.9	MIAMI APP CON 128.6 306.975	OPA LOCKA TOWER ★ 134.675 (CTAF) 0	GND CON 120.025	CLNC DEL 119.2	GCO 119.45



VGSI and ILS glidepath not coincident (VGSI Angle 3.00/TCH 55).		2000 hdg 093°	DHP R-069	JANUS △
OKANE INT RADAR 1600 093° GS 3.00° TCH 51		SAZBO INT RADAR 1600	ZOLTA INT 480	
5.6 NM		3.3 NM	1.5 NM	
CATEGORY	A	B	C	D
S-ILS 9L	258-3/4 250 (300-3/4)			
S-LOC 9L	480-3/4	472 (500-3/4)	480-1	472 (500-1)
CIRCLING	480-1 472 (500-1)	520-1 512 (600-1)	620-1 3/4 612 (700-1 3/4)	740-2 1/4 732 (800-2 1/4)
ZOLTA FIX MINIMUMS				
S-LOC 9L	380-3/4 372 (400-3/4)			
CIRCLING	480-1 472 (500-1)	520-1 512 (600-1)	620-1 3/4 612 (700-1 3/4)	740-2 1/4 732 (800-2 1/4)

ELEV	8	TDZE	8
MRL Rwy 9R-27L HRL Rwy 9L-27R and 12-30			
FAF to MAP 4.8 NM			
Knots	60	90	120 150 180
Min:Sec	4:48	3:12	2:24 1:55 1:36

SE-3, 07 AUG 2025 to 04 SEP 2025

SE-3, 07 AUG 2025 to 04 SEP 2025

MIAMI, FLORIDA  
Amdt 6 12JUN25

25°54'N-80°17'W

# ILS or LOC RWY 9L