

25°54'N-80°17'W

MIAMI, FLORIDA

AL-256 (FAA)

25219

|   |                        |   |
|---|------------------------|---|
| LOC/DME I-PLJ<br><b>111.35</b><br>Chan <b>50(Y)</b> | APP CRS<br><b>273°</b> | Rwy Ldg <b>8002</b><br>TDZE <b>8</b><br>Apt Elev <b>8</b> |
|---|------------------------|---|

ILS or LOC RWY 27R  
MIAMI-OPA LOCKA EXEC (OPF)

**⚠** DME required. When local altimeter setting not received, use Miami Intl altimeter setting and increase all DA/MDA 20 feet and Circling Cat D visibility ¼ SM. For inop ALS, increase S-ILS 27R all Cats visibility to ¾ SM and S-LOC 27R Cats C/D visibility to 1½ SM. Rwy 27R helicopter visibility reduction below ¾ SM NA. Autopilot coupled approach NA below 700 feet.

MALS

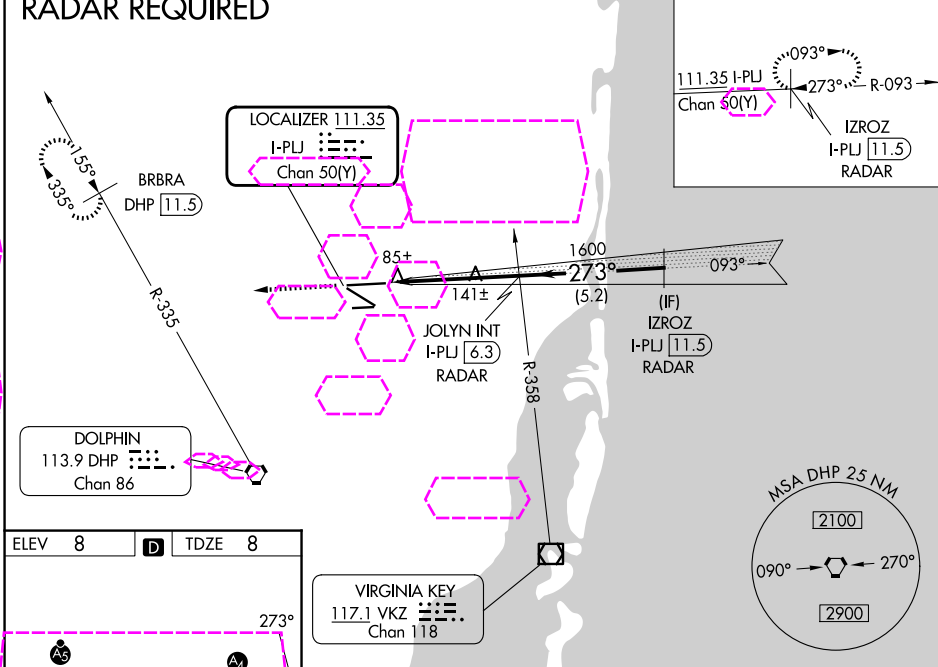
=

MISSED APPROACH: Climb to 2000 heading 273° and DHP VORTAC R-335 to BRBRA/DHP 11.5 DME and hold.

|                      |                                       |  |                           |                          |                      |
|----------------------|---------------------------------------|--|---------------------------|--------------------------|----------------------|
| ATIS<br><b>125.9</b> | MIAMI APP CON<br><b>128.6 306.975</b> | OPA LOCKA TOWER ★<br><b>134.675 (CTAF) 0</b> | GND CON<br><b>120.025</b> | CLNC DEL<br><b>119.2</b> | GCO<br><b>119.45</b> |
|----------------------|---------------------------------------|--|---------------------------|--------------------------|----------------------|

RADAR REQUIRED

ALTERNATE MISSED APCH FIX



ELEV **8** **D** TDZE **8**

273°

MIRL Rwy 9R-27L  
HIRL Rwys 9L-27R and 12-30

FAF to MAP 4.8 NM

|         |      |      |      |      |      |
|---------|------|------|------|------|------|
| Knots   | 60   | 90   | 120  | 150  | 180  |
| Min:Sec | 4:48 | 3:12 | 2:24 | 1:55 | 1:36 |

|           |                   |                |                        |                        |
|-----------|-------------------|----------------|------------------------|------------------------|
| 2000      | DHP R-335         | BRBRA DHP 11.5 | JOLYN INT I-PLJ 6.3    | IZROZ INT I-PLJ 11.5   |
| hdg 273°  |                   |                |                        |                        |
|           | I-PLJ 1.5         | I-PLJ 2.6      | 1600                   | 1700                   |
|           | 1.1 NM            | 3.7 NM         | 5.2 NM                 |                        |
| CATEGORY  | A                 | B              | C                      | D                      |
| S-ILS 27R | 291-¾ 283 (300-¾) |                |                        |                        |
| S-LOC 27R | 420-¾             | 412 (500-¾)    | 420-1                  | 412 (500-1)            |
| CIRCLING  | 540-1             | 532 (600-1)    | 620-1¾<br>612 (700-1¾) | 740-2¾<br>732 (800-2¾) |

MIAMI, FLORIDA  
Amdt 1F 11JUL24

25°54'N-80°17'W

MIAMI-OPA LOCKA EXEC (OPF)  
ILS or LOC RWY 27R

SE-3, 07 AUG 2025 to 04 SEP 2025

SE-3, 07 AUG 2025 to 04 SEP 2025