

MIAMI, FLORIDA

AL-256 (FAA)

24137

LOC/DME I-OLX <b>111.55</b> Chan <b>52</b> (Y)	APP CRS <b>128°</b>	Rwy Idg <b>6000</b> TDZE <b>8</b> Apt Elev <b>8</b>
--	------------------------	---

ILS or LOC RWY 12  
MIAMI-OPA LOCKA EXEC(OPF)

**T** Inop table does not apply to S-ILS 12. Helicopter visibility reduction below  $\frac{3}{4}$  SM NA. VDP NA with Miami Intl altimeter setting. When local altimeter setting not received, use Miami Intl altimeter setting and increase all DA/MDA 20 feet and Circling Cat D visibility  $\frac{1}{4}$  SM. For inop MALSR, increase S-LOC 12 Cats A and B visibility to 1 mile and Cats C and D visibility to  $\frac{1}{2}$  miles.

MALSR

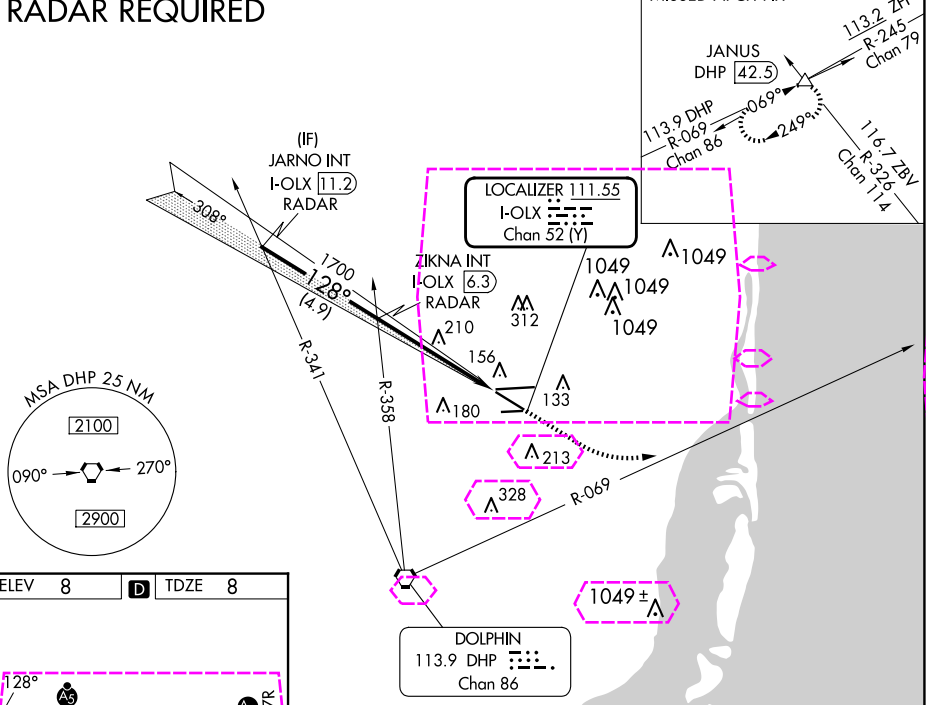


**MISSED APPROACH:** Climb to 800 then climbing left turn to 2000 on heading 090° and DHP VORTAC R-069 to JANUS INT/DHP 42.5 DME and hold.

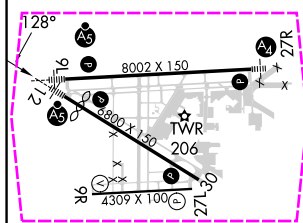
ATIS 125.9	MIAMI APP CON 128.6 306.975	OPA LOCKA TOWER ★ 134.675 (CTAF) 0	GND CON 120.025	CLNC DEL 119.2	GCO 119.45
---------------	--------------------------------	---------------------------------------	--------------------	-------------------	---------------

## RADAR REQUIRED

MISSED APCH FIX



ELEV	8	<b>D</b>	TDZE	8
------	---	----------	------	---



MIRL Rwy 9R-27L	
HIRL Rwy 9L-27R and 12-30	<b>L</b>
FAF to MAP 5.2 NM	

Knots	60	90	120	150	180
Min:Sec	5:12	3:28	2:36	2:05	1:44

MIAMI, FLORIDA  
Amdt 2C 02DEC21

25°54'N-80°17'W

MIAMI-OPA LOCKA EXEC (OPF)  
ILS or LOC RWY 12

MIAMI, FLORIDA

AL-256 (FAA)

25219


LOC/DME I-OLX <b>111.55</b> Chan <b>52 (Y)</b>	APP CRS <b>128°</b>	Rwy Ldg TDZE Apt Elev <b>8</b>
--	------------------------	--------------------------------------

# ILS or LOC RWY 12

MIAMI-OPA LOCKA EXEC (OPF)

**⚠** Inop table does not apply to S-ILS 12. Helicopter visibility reduction below ¾ SM NA. VDP NA with Miami Intl altimeter setting. When local altimeter setting not received, use Miami Intl altimeter setting and increase all DA/MDA 20 feet and Circling Cat D visibility ¼ SM. For inop MALSR, increase S-LOC 12 Cats A and B visibility to 1 mile and Cats C and D visibility to 1½ miles.

MALSR

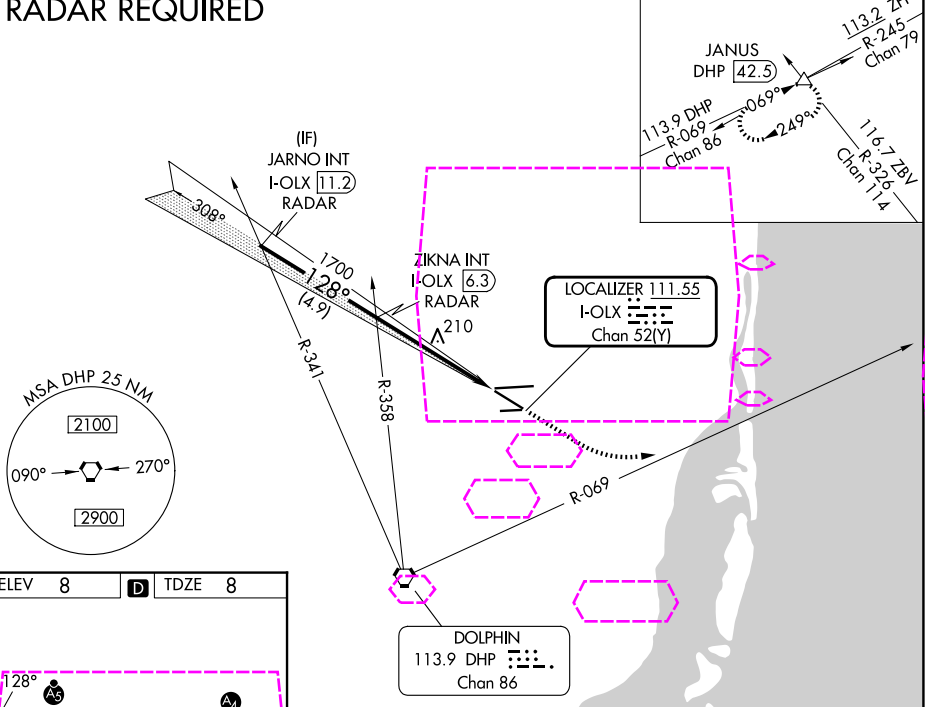


MISSED APPROACH: Climb to 800 then climbing left turn to 2000 on heading 090° and DHP VORTAC R-069 to JANUS INT/DHP 42.5 DME and hold.

ATIS <b>125.9</b>	MIAMI APP CON <b>128.6 306.975</b>	OPA LOCKA TOWER ★ <b>134.675 (CTAF) 0</b>	GND CON <b>120.025</b>	CLNC DEL <b>119.2</b>	GCO <b>119.45</b>
----------------------	---------------------------------------	--	---------------------------	--------------------------	----------------------

## RADAR REQUIRED

MISSED APCH FIX



ELEV 8	D	TDZE 8
--------	---	--------

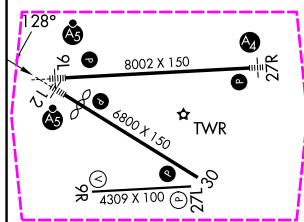


Diagram showing the missed approach fix and the radar coverage for the ILS or LOC RWY 12. The chart includes the MSA DHP 25 NM and the DOLPHIN 113.9 DHP Chan 86.

MIRL Rwy 9R-27L  
HIRL Rwys 9L-27R and 12-30 0  
FAF to MAP 5.2 NM

Knots	60	90	120	150	180
Min:Sec	5:12	3:28	2:36	2:05	1:44

JARNO INT I-OLX 11.2 RADAR		ZIKNA INT I-OLX 6.3 RADAR		800	2000	DHP R-069	JANUS
1700		1700		hdg 090°			△
GS 3.00° TCH 53		1700		*LOC only.			
4.9 NM		3.7 NM					
CATEGORY	A	B	C	D			
S-ILS 12	208-¾ 200 (200-¾)						
S-LOC 12	520-¾	512 (600-¾)	520-1	512 (600-1)			
CIRCLING	540-1	532 (600-1)	620-1¾ 612 (700-1¾)	740-2¼ 732 (800-2¼)			

MIAMI, FLORIDA  
Amdt 2C 02DEC21

25°54'N-80°17'W

MIAMI-OPA LOCKA EXEC (OPF)  
ILS or LOC RWY 12

SE-3, 07 AUG 2025 to 04 SEP 2025

SE-3, 07 AUG 2025 to 04 SEP 2025