

MELBOURNE, FLORIDA

AL-252 (FAA)

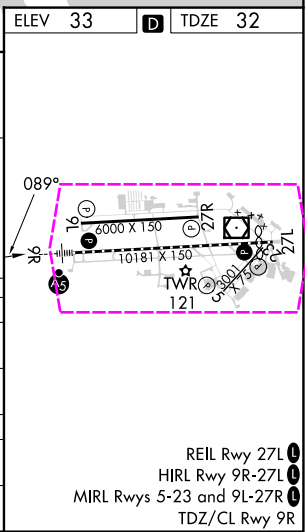
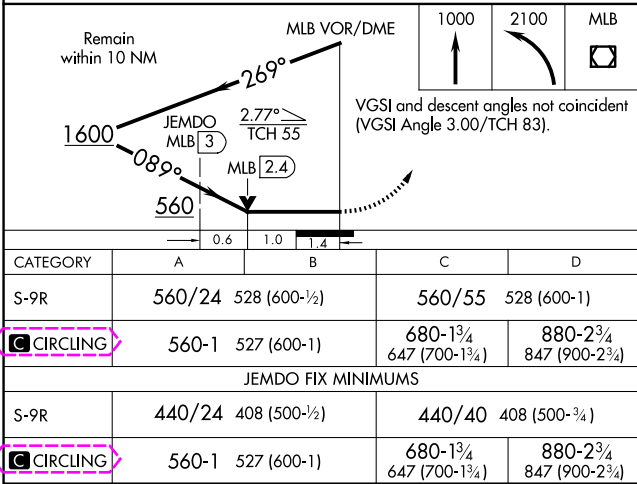
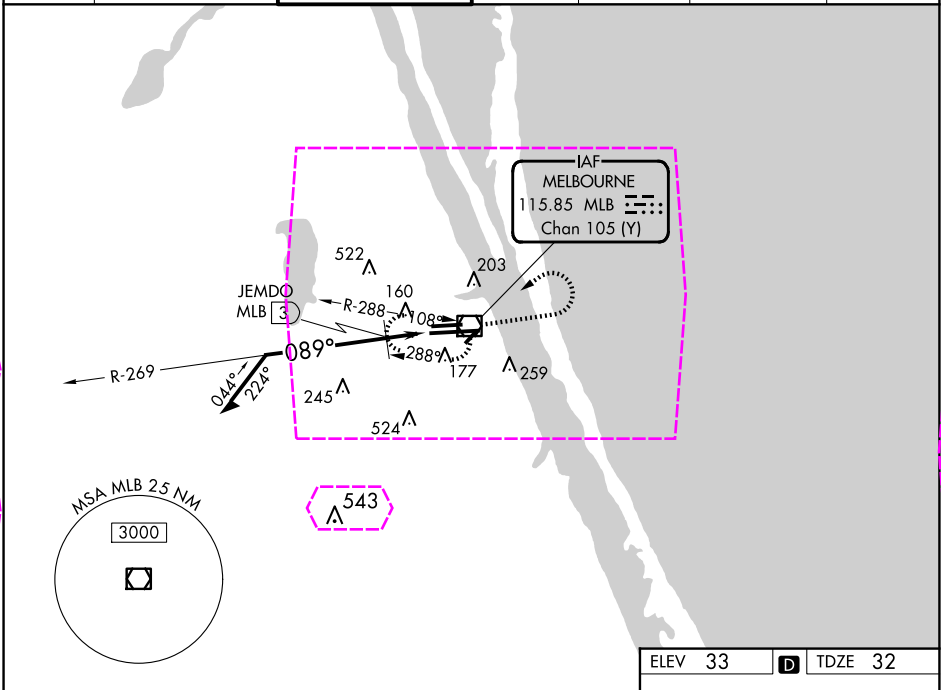
25107

VOR/DME MLB	APP CRS	Rwy Idg
115.85	089°	10181
Chan 105 (Y)		TDZE 32
		Apt Elev 33

VOR RWY 9R
MELBOURNE ORLANDO INTL (MLB)

⚠ JEMDO FIX minimums: For inop MALSRL, increase S-9R Cats C and D visibility to RVR 6000.	MALSRL AS	MISSED APPROACH: Climb to 1000, then climbing left turn to 2100 direct MLB VOR/DME and hold, continue climb-in-hold to 2100.
--	---------------------	--

ATIS	ORLANDO APP CON	MELBOURNE TOWER ★	GND CON	CLNC DEL	CLNC DEL	UNICOM
132.55	132.65 281.425	118.2 (CTAF) 257.8	121.9	121.9	132.65 (When twr closed)	122.95



MELBOURNE, FLORIDA
Amdt 21C 11AUG22

28°06'N-80°39'W

MELBOURNE ORLANDO INTL (MLB)
VOR RWY 9R

REIL Rwy 27L 0
HIRL Rwy 9R-27L 0
MIRL Rwy 5-23 and 9L-27R 0
TDZ/CL Rwy 9R

MELBOURNE, FLORIDA

AL-252 (FAA)

25219

VOR/DME MLB	APP CRS	Rwy Ldg
115.85	089°	10181
Chan 105 (Y)		TDZE 32
		Apt Elev 33

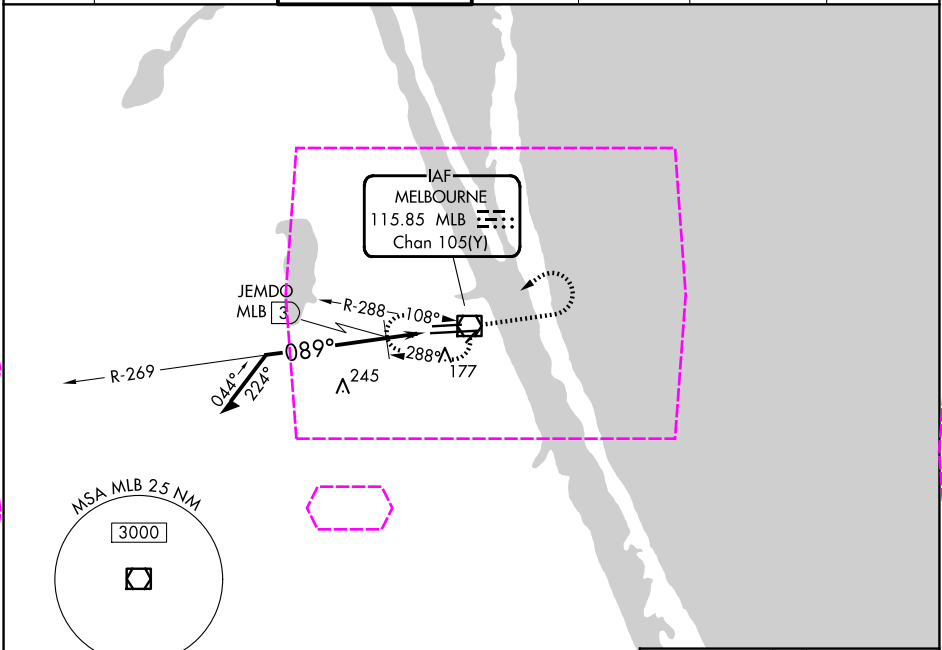
VOR RWY 9R
MELBOURNE ORLANDO INTL (MLB)

JEMDO FIX minimums: For inop MALSRL, increase S-9R Cats C and D visibility to RVR 6000.

MALSRL

MISSED APPROACH: Climb to 1000, then climbing left turn to 2100 direct MLB VOR/DME and hold, continue climb-in-hold to 2100.

ATIS	ORLANDO APP CON	MELBOURNE TOWER ★	GND CON	CLNC DEL	CLNC DEL	UNICOM
132.55	126.025 281.425	118.2 (CTAF) 257.8	121.9	121.9	126.025 (When twr closed)	122.95



ELEV 33

TDZE 32

Remain within 10 NM

MLB VOR/DME

1000

2100

MLB

VGSI and descent angles not coincident (VGSI Angle 3.00/TCH 83).

1600

JEMDO MLB 3

2.77° TCH 55

560

MLB 2.4

0.6

1.0

1.4

CATEGORY	A	B	C	D
S-9R	560/24	528 (600-½)	560/55	528 (600-1)
CIRCLING	560-1	527 (600-1)	680-1¾ 647 (700-1¾)	880-2¾ 847 (900-2¾)
JEMDO FIX MINIMUMS				
S-9R	440/24	408 (500-½)	440/40	408 (500-¾)
CIRCLING	560-1	527 (600-1)	680-1¾ 647 (700-1¾)	880-2¾ 847 (900-2¾)

089°

6000 X 150

10181 X 150

TWR

REIL Rwy 27L

HIRL Rwy 9R-27L

MIRL Rwy 5-23 and 9L-27R

TDZ/CL Rwy 9R

MELBOURNE, FLORIDA
Amdt 21C 11AUG22

28°06'N-80°39'W

MELBOURNE ORLANDO INTL (MLB)
VOR RWY 9R

SE-3, 07 AUG 2025 to 04 SEP 2025

SE-3, 07 AUG 2025 to 04 SEP 2025