

MELBOURNE, FLORIDA

AL-252 (FAA)

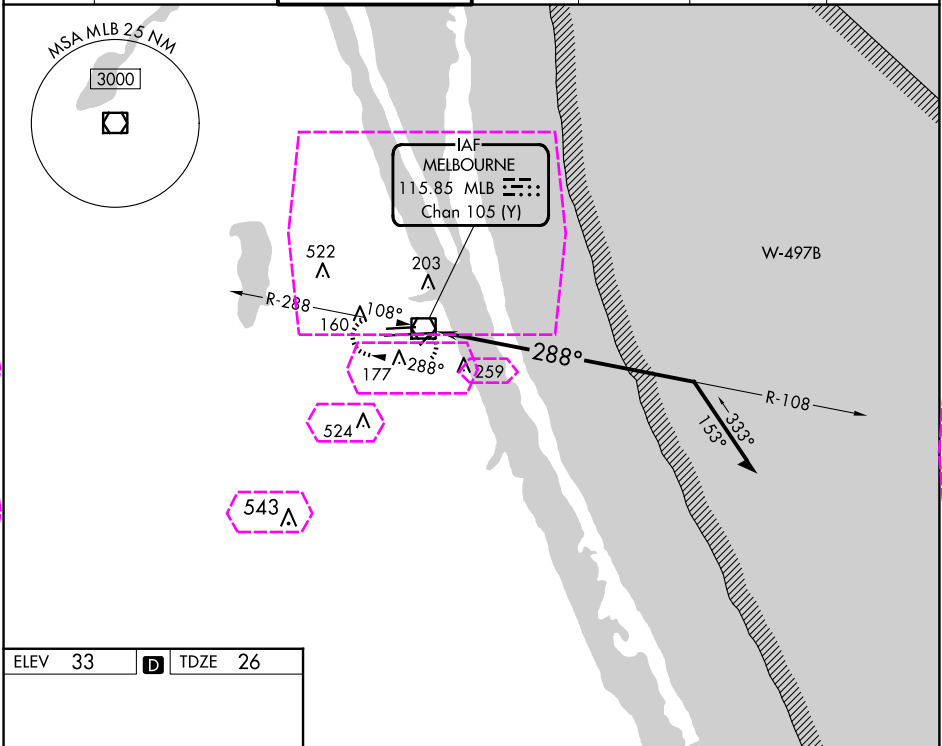
25107

VOR/DME MLB	APP CRS	Rwy Idg
115.85	288°	9482
Chan 105 (Y)		26
		Apt Elev 33

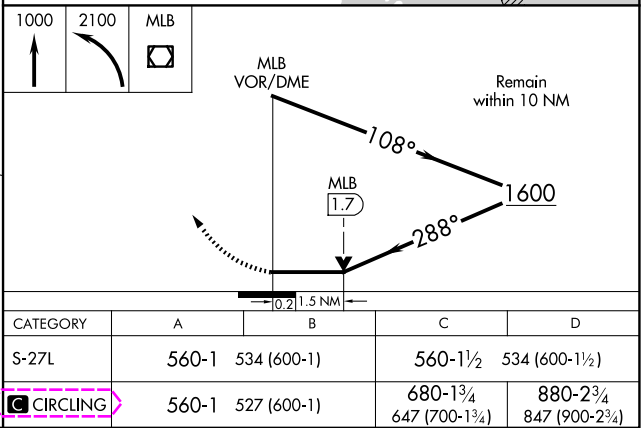
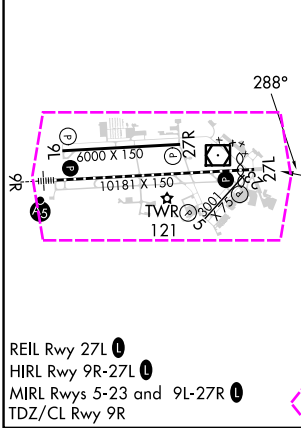
VOR RWY 27L
MELBOURNE ORLANDO INTL (MLB)

MISSSED APPROACH: Climb to 1000 then climbing left turn to 2100 direct MLB VOR/DME and hold.

ATIS	ORLANDO APP CON	MELBOURNE TOWER ★	GND CON	CLNC DEL	CLNC DEL	UNICOM
132.55	132.65 281.425	118.2 (CTAF) 257.8	121.9	121.9	132.65 (When twr closed)	122.95



ELEV 33	D	TDZE 26
---------	---	---------



MELBOURNE, FLORIDA
Orig 08NOV18

28°06'N-80°39'W

MELBOURNE ORLANDO INTL (MLB)
VOR RWY 27L

SE-3, 10 JUL 2025 to 07 AUG 2025

SE-3, 10 JUL 2025 to 07 AUG 2025

MELBOURNE, FLORIDA

AL-252 (FAA)

25219

VOR/DME MLB 115.85 Chan 105 (Y)	APP CRS 288°	Rwy Ldg 9482 TDZE 26 Apt Elev 33
---	------------------------	---

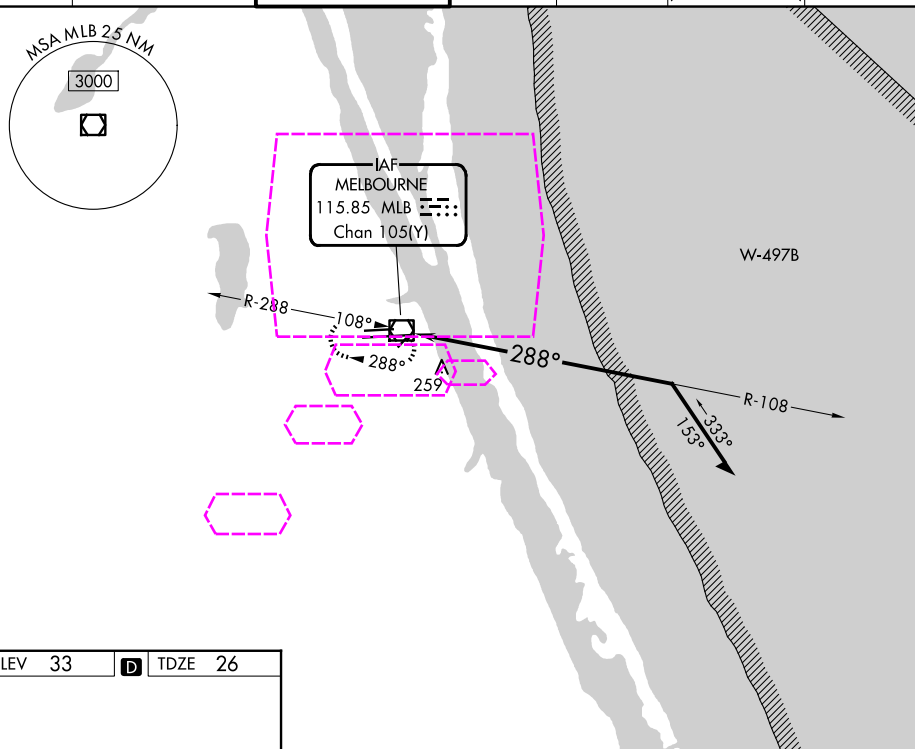
VOR RWY 27L

MELBOURNE ORLANDO INTL (MLB)

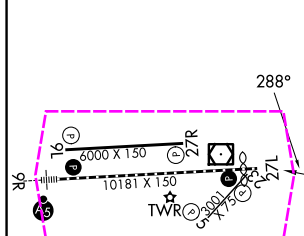


MISSED APPROACH: Climb to 1000 then climbing left turn to 2100 direct MLB VOR/DME and hold.

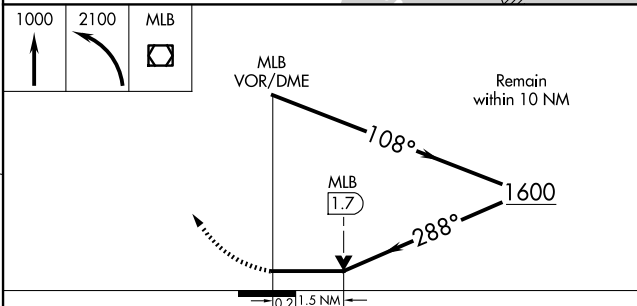
ATIS 132.55	ORLANDO APP CON 126.025 281.425	MELBOURNE TOWER ★ 118.2 (CTAF) 0 257.8	GND CON 121.9	CLNC DEL 121.9	CLNC DEL 126.025 (When twr closed)	UNICOM 122.95
----------------	------------------------------------	---	------------------	-------------------	--	------------------



ELEV 33	D	TDZE 26
---------	----------	---------



REIL Rwy 27L **L**
HIRL Rwy 9R-27L **L**
MIRL Rwy 5-23 and 9L-27R **L**
TDZ/CL Rwy 9R



CATEGORY	A	B	C	D
S-27L	560-1	534 (600-1)	560-1½	534 (600-1½)
CIRCLING	560-1	527 (600-1)	680-1¾ 647 (700-1¾)	880-2¾ 847 (900-2¾)

MELBOURNE, FLORIDA

Orig 08NOV18

MELBOURNE ORLANDO INTL (MLB)

28°06'N-80°39'W

VOR RWY 27L

SE-3, 07 AUG 2025 to 04 SEP 2025

SE-3, 07 AUG 2025 to 04 SEP 2025