

MELBOURNE, FLORIDA

AL-252 (FAA)

25107

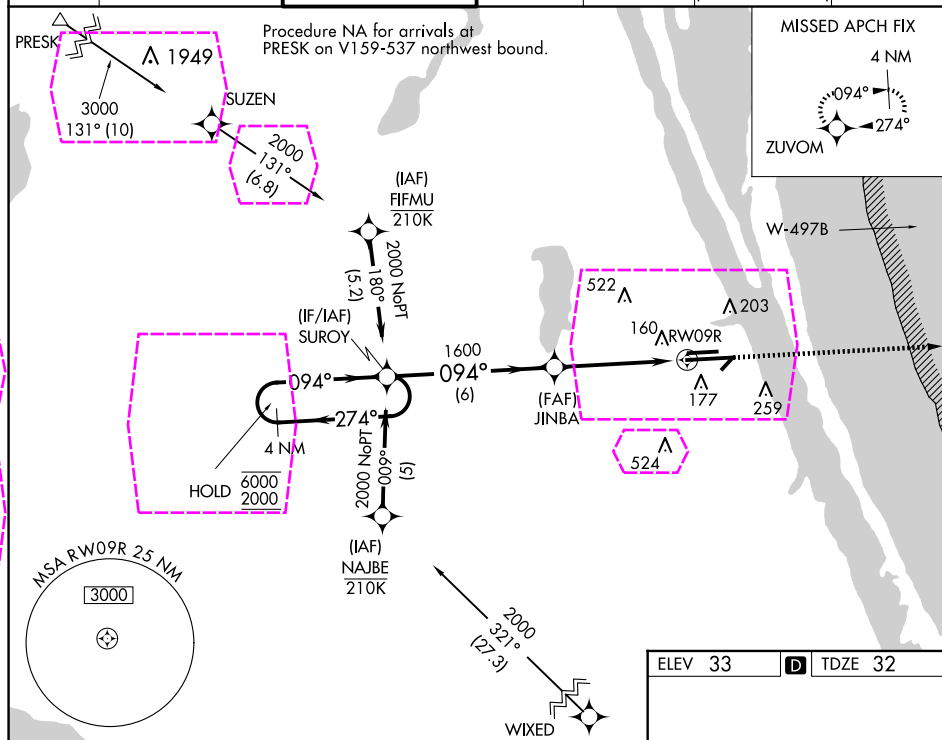
WAAS CH 60901 W09B	APP CRS 094°	Rwy Idg 10181 TDZE 32 Apt Elev 33
--	------------------------	--

RNAV (GPS) RWY 9R

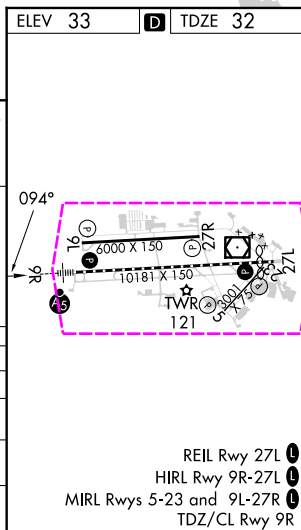
MELBOURNE ORLANDO INTL (MLB)

RNP APCH - GPS.			MALSR		MISSED APPROACH: Climb to 2000 direct ZUVOM and hold.	
For uncompensated Baro-VNAV systems, LNAV/VNAV NA below 2°C or above 54°C.						

ATIS 132.55	ORLANDO APP CON 132.65 281.425	MELBOURNE TOWER ★ 118.2 (CTAF) 0 257.8	GND CON 121.9	CLNC DEL 121.9	CLNC DEL 132.65 (When twr closed)	UNICOM 122.95
-----------------------	--	--	-------------------------	--------------------------	--	-------------------------



CATEGORY		A	B	C	D
LPV	DA	232/18 200 (200-½)			
LNAV/VNAV	DA	427/35 395 (400-⅝)			
LNAV MDA		480/24	448 (500-½)	480/45	448 (500-⅞)
CIRCLING		500-1 467 (500-1)	560-1 527 (600-1)	680-1¾ 647 (700-1¾)	880-2¾ 847 (900-2¾)



MELBOURNE, FLORIDA

Amtd 2 20FEB25

28°06'N-80°39'W

MELBOURNE ORLANDO INTL (MLB)

RNAV (GPS) RWY 9R

MELBOURNE, FLORIDA

AL-252 (FAA)

25219

WAAS CH 60901 W09B	APP CRS 094°	Rwy Ldg 10181 TDZE 32 Apt Elev 33
--	------------------------	--

RNAV (GPS) RWY 9R

MELBOURNE ORLANDO INTL (MLB)

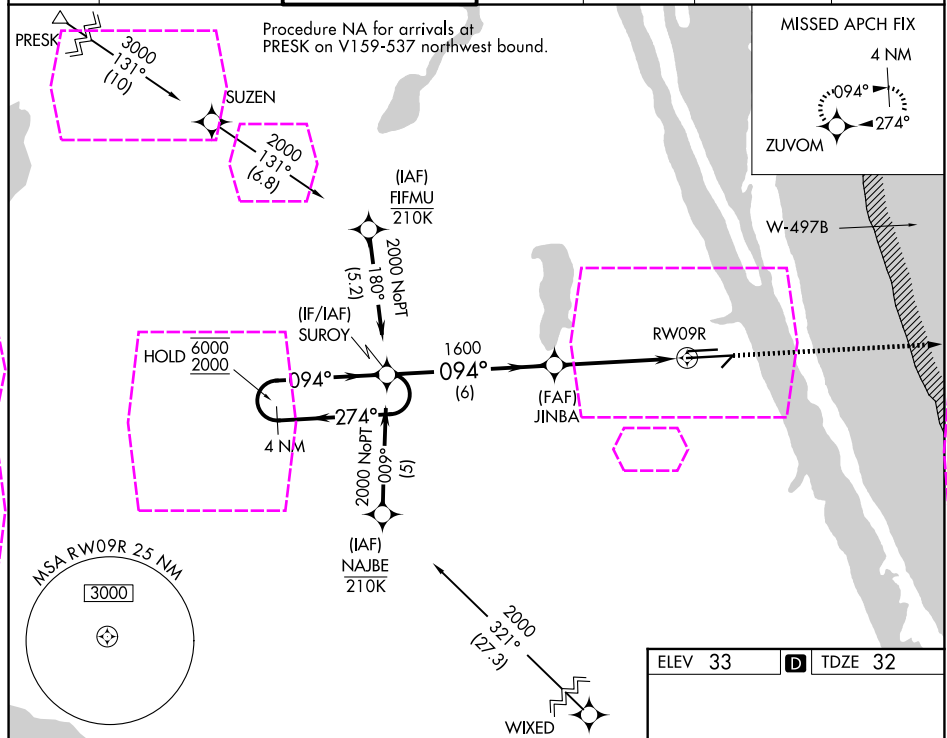
RNP APCH - GPS.

For uncompensated Baro-VNAV systems, LNAV/VNAV NA below 2°C or above 54°C.

MALSR

MISSED APPROACH: Climb to 2000 direct ZUVOM and hold.

ATIS 132.55	ORLANDO APP CON 126.025 281.425	MELBOURNE TOWER ★ 118.2 (CTAF) 0 257.8	GND CON 121.9	CLNC DEL 121.9	CLNC DEL 126.025 (When twr closed)	UNICOM 122.95
-----------------------	---	---	-------------------------	--------------------------	---	-------------------------



4 NM Holding Pattern

VGSI and RNAV glidepath not coincident (VGSI Angle 3.00/TCH 83).

SUROY

JINBA

RW09R

ZUVOM

GP 3.00° TCH 55

6000

2000

1600

1.1 NM to RW09R

6 NM

3.6 NM

1.1 NM

CATEGORY	A	B	C	D
LPV DA	232/18 200 (200-½)			
LNAV/VNAV DA	427/35 395 (400-⅝)			
LNAV MDA	480/24 448 (500-½)	480/45 448 (500-⅞)		
CIRCLING	500-1 467 (500-1)	560-1 527 (600-1)	680-1¾ 647 (700-1¾)	880-2¾ 847 (900-2¾)

ELEV 33 TDZE 32

MELBOURNE, FLORIDA

Amtd 2 20FEB25

28°06'N-80°39'W

MELBOURNE ORLANDO INTL (MLB)

RNAV (GPS) RWY 9R

SE-3, 07 AUG 2025 to 04 SEP 2025

SE-3, 07 AUG 2025 to 04 SEP 2025