

MELBOURNE ORLANDO INTL (MLB)
RNAV (GPS) RWY 9L

MELBOURNE, FLORIDA

AL-252 (FAA)

25219

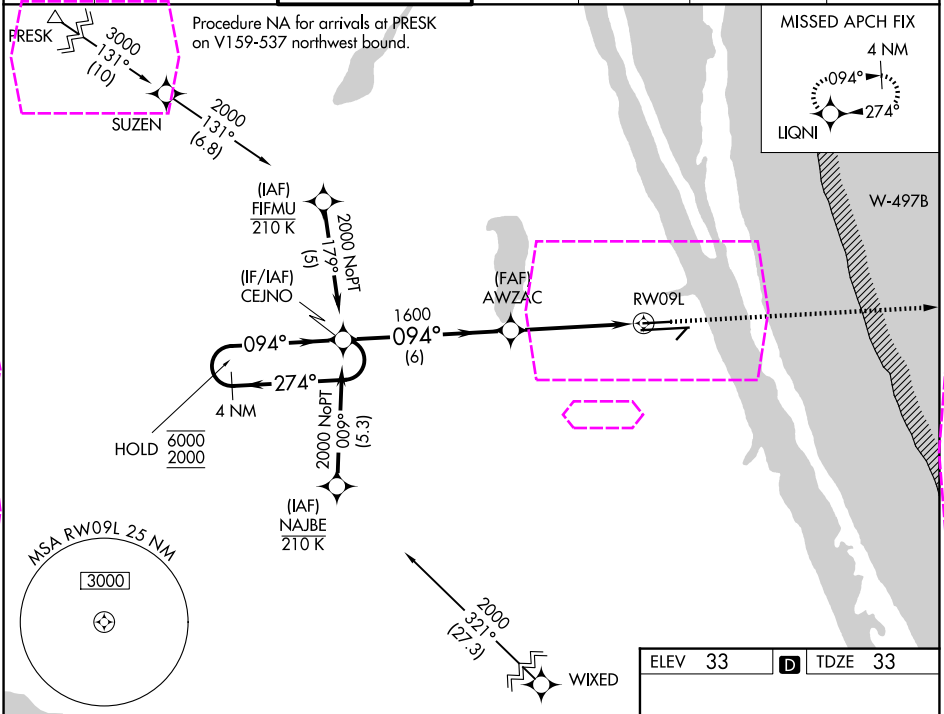
WAAS CH 65601 W09A	APP CRS 094°	Rwy Ldg TDZE Apt Elev	6000 33 33
--	------------------------	-----------------------------	---------------------------------------

RNAV (GPS) RWY 9L

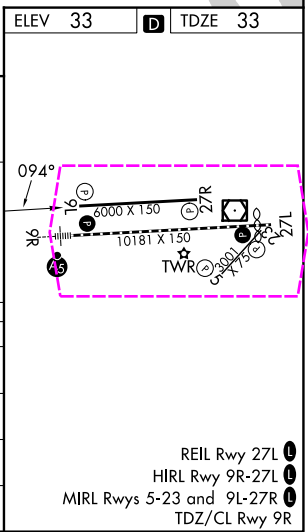
MELBOURNE ORLANDO INTL (MLB)

RNP APCH - GPS.		MISSED APPROACH: Climb to 2000 direct LIQNI and hold.	
For uncompensated Baro-VNAV systems, LNAV/VNAV NA below 2°C or above 54°C. Rwy 9L helicopter visibility reduction below 3/4 SM NA.			

ATIS 132.55	ORLANDO APP CON 126.025 281.425	MELBOURNE TOWER ★ 118.2 (CTAF) 257.8	GND CON 121.9	CLNC DEL 121.9	CLNC DEL 126.025 (When twr closed)	UNICOM 122.95
-----------------------	---	--	-------------------------	--------------------------	---	-------------------------



4NM Holding Pattern		VGSI and RNAV glidepath not coincident (VGSI Angle 3.00/TCH 39).		2000	LIQNI
6000 2000		CEJNO	AWZAC	1600	1.3 NM to RW09L
GP 3.00° TCH 55		274°	094°	1600	RW09L
		6 NM	3.5 NM	1.3	
CATEGORY	A	B	C	D	
LPV DA	283-3/4		250 (300-3/4)		
LNAV/VNAV DA	473-1 1/4		440 (500-1 1/4)		
LNAV MDA	480-1	447 (500-1)	480-1 3/8	447 (500-1 3/8)	
CIRCLING	500-1 467 (500-1)	560-1 527 (600-1)	680-1 3/4 647 (700-1 3/4)	880-2 3/4 847 (900-2 3/4)	



MELBOURNE, FLORIDA

Amtd 2 20FEB25

28°06'N-80°39'W

MELBOURNE ORLANDO INTL (MLB)

RNAV (GPS) RWY 9L

SE-3, 07 AUG 2025 to 04 SEP 2025

SE-3, 07 AUG 2025 to 04 SEP 2025