

MELBOURNE, FLORIDA

AL-252 (FAA)

25107

WAAS CH 50101 W27A	APP CRS 274°	Rwy Idg TDZE Apt Elev	6000 32 33
--	------------------------	-----------------------------	---------------------------------------

RNAV (GPS) RWY 27R

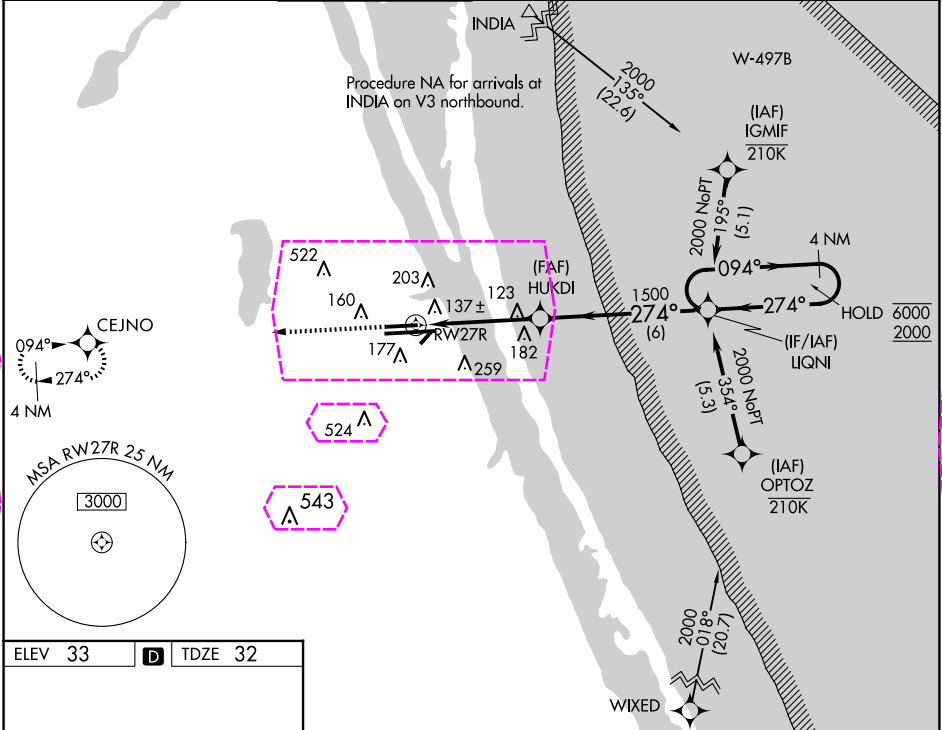
MELBOURNE ORLANDO INTL (MLB)

RNP APCH - GPS.

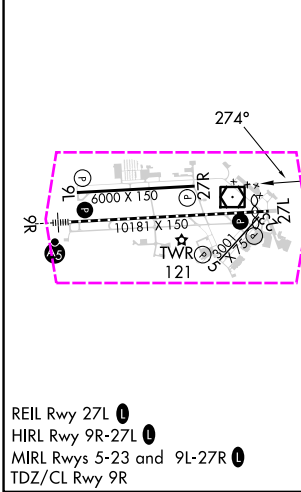
For uncompensated Baro-VNAV systems, LNAV/VNAV NA below 2°C or above 54°C.

MISSED APPROACH: Climb to 2000 direct CEJNO and hold.

ATIS 132.55	ORLANDO APP CON 132.65 281.425	MELBOURNE TOWER ★ 118.2(CTAF) 257.8	GND CON 121.9	CLNC DEL 121.9	CLNC DEL 132.65 (When twr closed)	UNICOM 122.95
-----------------------	--	---	-------------------------	--------------------------	--	-------------------------



ELEV 33	D	TDZE 32
---------	---	---------



2000	CEJNO	VGSI and RNAV glidepath not coincident (VGSI Angle 3.00/TCH 40).		4 NM Holding Pattern

MELBOURNE, FLORIDA

Amdt 2 20FEB25

28°06'N-80°39'W

MELBOURNE ORLANDO INTL (MLB)

RNAV (GPS) RWY 27R

MELBOURNE, FLORIDA

AL-252 (FAA)

25219

WAAS CH 50101 W27A	APP CRS 274°	Rwy Ldg TDZE Apt Elev	6000 32 33
--	------------------------	-----------------------------	---------------------------------------

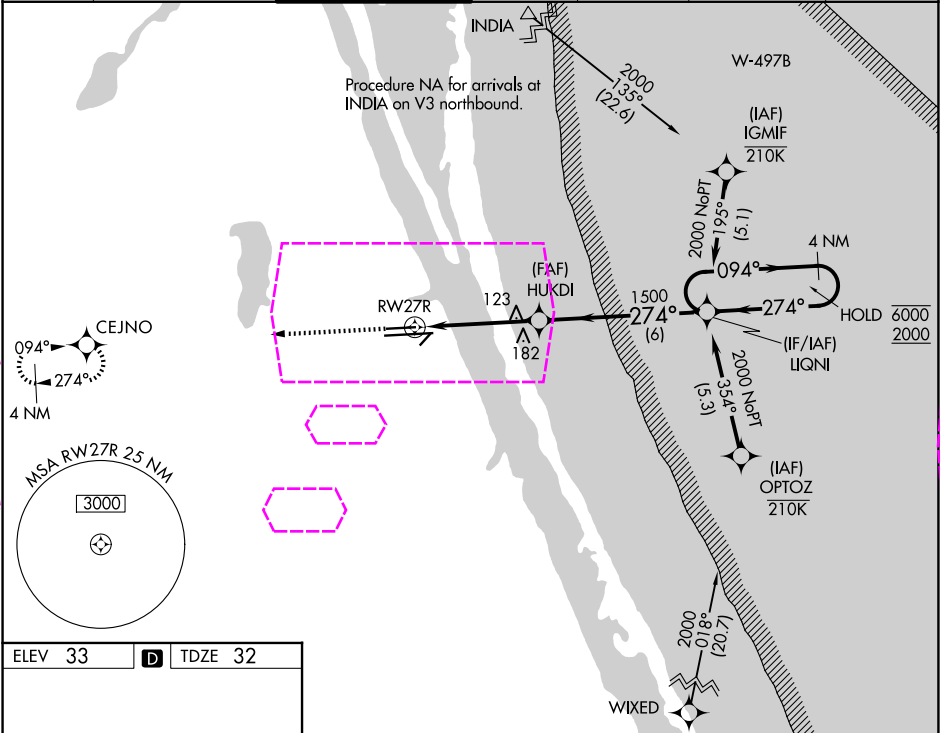
RNAV (GPS) RWY 27R
MELBOURNE ORLANDO INTL (MLB)

RNP APCH - GPS.

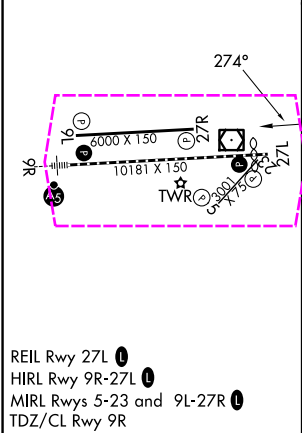
▼ For uncompensated Baro-VNAV systems, LNAV/VNAV NA below 2°C or above 54°C.
▲


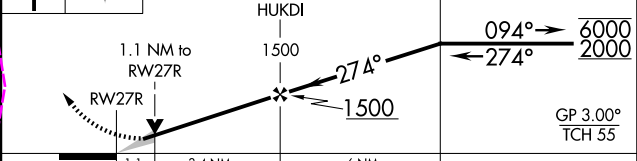
MISSED APPROACH: Climb to 2000 direct CEJNO and hold.

ATIS 132.55	ORLANDO APP CON 126.025 281.425	MELBOURNE TOWER ★ 118.2 (CTAF) 0 257.8	GND CON 121.9	CLNC DEL 121.9	CLNC DEL 126.025 (When twr closed)	UNICOM 122.95
-----------------------	---	--	-------------------------	--------------------------	---	-------------------------



ELEV 33	D	TDZE 32
---------	---	---------



2000 ↑	CEJNO 	VGSI and RNAV glidepath not coincident (VGSI Angle 3.00/TCH 40).	4 NM Holding Pattern	
				
CATEGORY	A	B	C	D
LPV DA	232- ³ / ₄ 200 (200- ³ / ₄)			
LNAV/ VNAV DA	282- ³ / ₄ 250 (300- ³ / ₄)			
LNAV MDA	400-1 368 (400-1)			
CIRCLING	500-1 467 (500-1)	560-1 527 (600-1)	680-1 ³ / ₄ 647 (700-1 ³ / ₄)	880-2 ³ / ₄ 847 (900-2 ³ / ₄)

MELBOURNE, FLORIDA

Amtd 2 20FEB25

28°06'N-80°39'W

MELBOURNE ORLANDO INTL (MLB)

RNAV (GPS) RWY 27R