

MELBOURNE, FLORIDA

AL-252 (FAA)

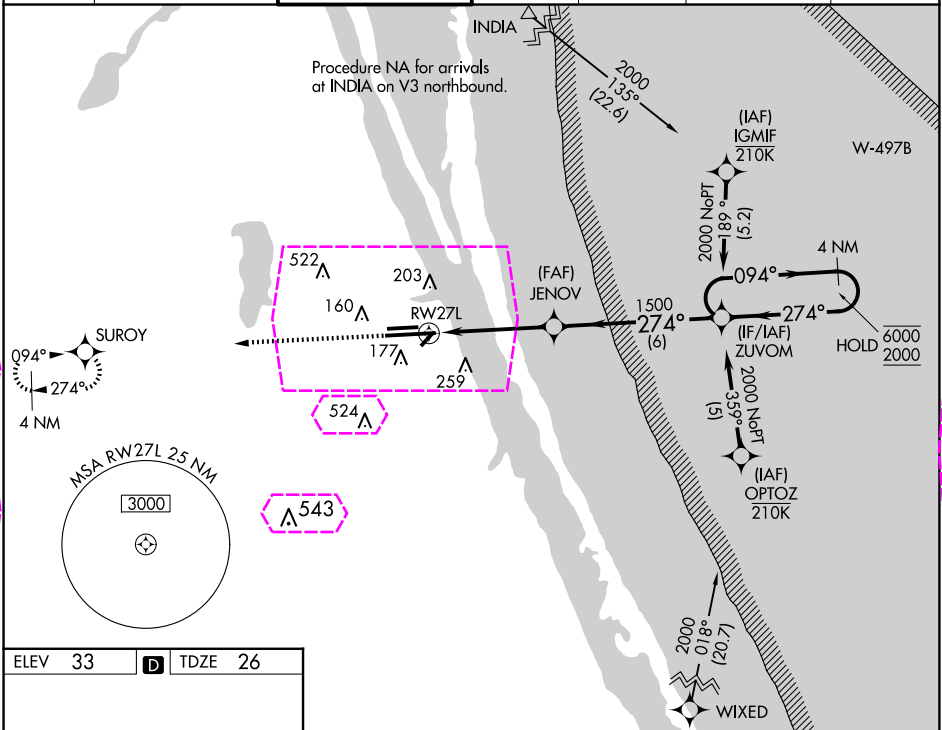
25107

WAAS CH 56201 W27B	APP CRS 274°	Rwy Idg 9482 TDZE 26 Apt Elev 33
--	------------------------	---

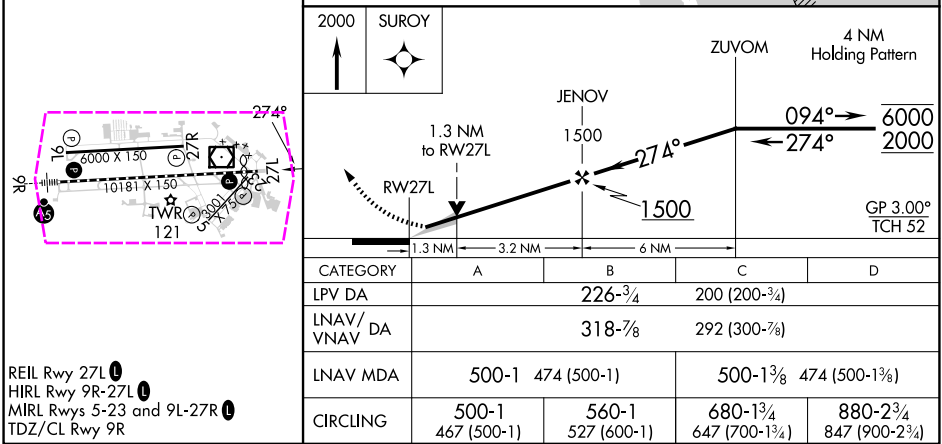
RNAV (GPS) RWY 27L

MELBOURNE ORLANDO INTL (MLB)

RNP APCH - GPS. ▼ For uncompensated Baro-VNAV systems, LNAV/VNAV ▲ NA below 2°C or above 54°C.			MISSED APPROACH: Climb to 2000 direct SUROY and hold.			
ATIS 132.55	ORLANDO APP CON 132.65 281.425	MELBOURNE TOWER ★ 118.2(CTAF) 0 257.8	GND CON 121.9	CLNC DEL 121.9	CLNC DEL 132.65 (When twr closed)	UNICOM 122.95



ELEV 33	D	TDZE 26
---------	---	---------



REIL Rwy 27L
HIRL Rwy 9R-27L
MIRL Rwy 5-23 and 9L-27R
TDZ/CL Rwy 9R

MELBOURNE, FLORIDA

Amtd 2 20FEB25

28°06'N-80°39'W

MELBOURNE ORLANDO INTL (MLB)

RNAV (GPS) RWY 27L

MELBOURNE, FLORIDA

AL-252 (FAA)

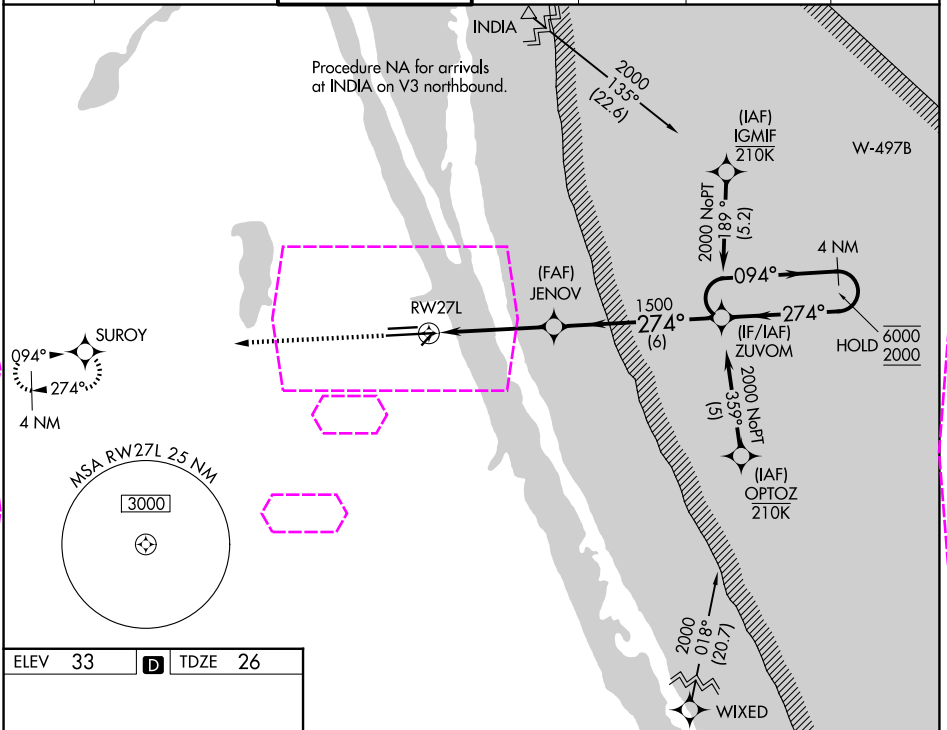
25219

WAAS CH 56201 W27B	APP CRS 274°	Rwy Ldg TDZE Apt Elev	9482 26 33
--	------------------------	-----------------------------	---------------------------------------

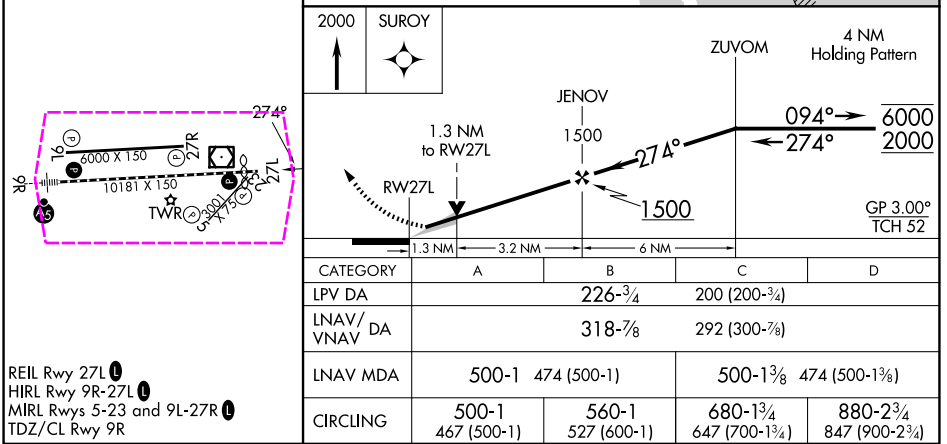
RNAV (GPS) RWY 27L

MELBOURNE ORLANDO INTL (MLB)

RNP APCH - GPS.			MISSED APPROACH: Climb to 2000 direct SUROY and hold.			
▼ For uncompensated Baro-VNAV systems, LNAV/VNAV ▲ NA below 2°C or above 54°C.						
ATIS 132.55	ORLANDO APP CON 126.025 281.425	MELBOURNE TOWER ★ 118.2(CTAF) 0 257.8	GND CON 121.9	CLNC DEL 121.9	CLNC DEL 126.025 (When twr closed)	UNICOM 122.95



ELEV 33	D	TDZE 26
---------	---	---------



REIL Rwy 27L
HIRL Rwy 9R-27L
MIRL Rwy 5-23 and 9L-27R
TDZ/CL Rwy 9R

MELBOURNE, FLORIDA

Amdt 2 20FEB25

28°06'N-80°39'W

MELBOURNE ORLANDO INTL (MLB)

RNAV (GPS) RWY 27L