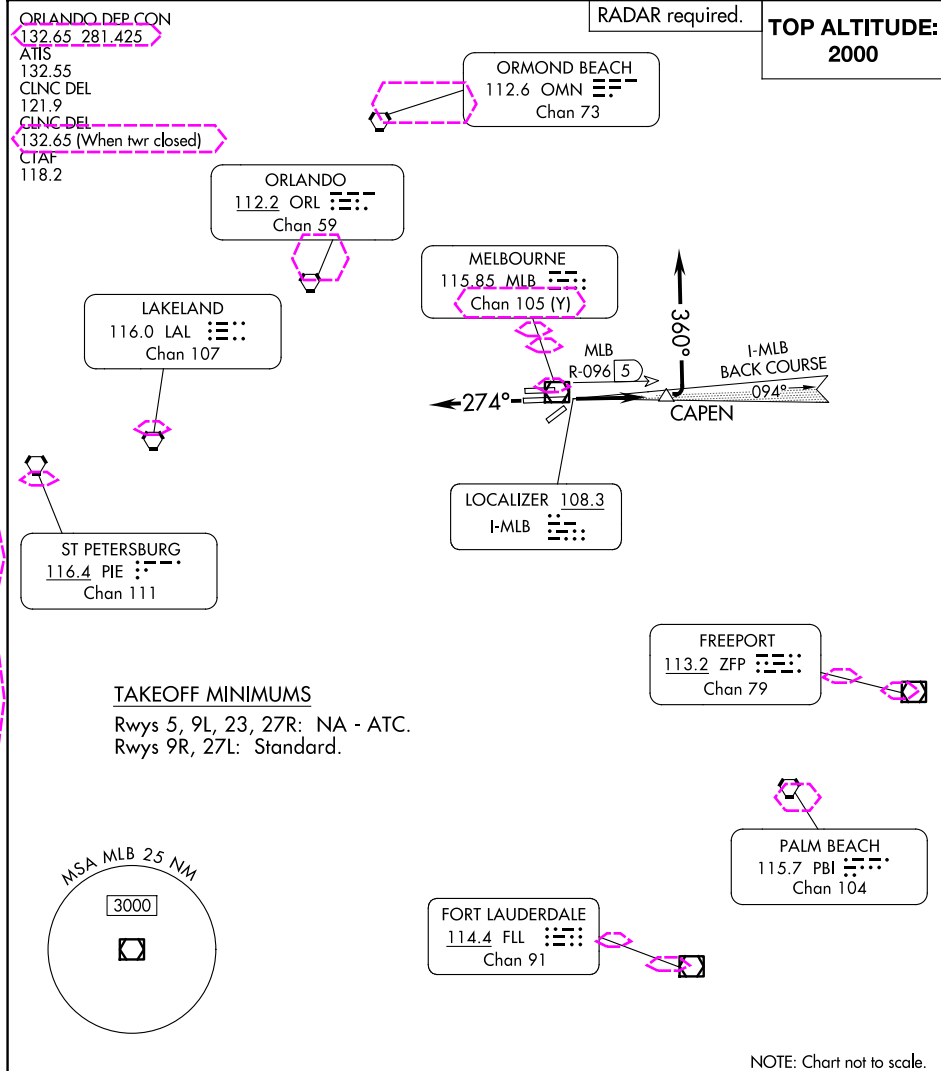


(MLB8.MLB) 25163

AL-252 (FAA)

MELBOURNE ORLANDO INTL (MLB)
MELBOURNE, FLORIDA

MELBOURNE EIGHT DEPARTURE



DEPARTURE ROUTE DESCRIPTION

TAKEOFF RUNWAY 9R: Climb on MLB VOR/DME R-096 to CAPEN/MLB VOR/DME 5.3 DME, then turn left heading 360°, thence. . .

TAKEOFF RUNWAY 27L: Climb on heading 274°, thence. . .

. . . all aircraft expect RADAR vectors to join assigned route, maintain 2000.
Expect clearance to filed altitude/flight level 10 minutes after departure.

MELBOURNE EIGHT DEPARTURE

(MLB8.MLB) 12JUN25

MELBOURNE, FLORIDA
MELBOURNE ORLANDO INTL (MLB)

SE-3, 10 JUL 2025 to 07 AUG 2025

SE-3, 10 JUL 2025 to 07 AUG 2025

(MLB8.MLB) 25219

AL-252 (FAA)

MELBOURNE ORLANDO INTL (MLB)
MELBOURNE, FLORIDA

MELBOURNE EIGHT DEPARTURE

ORLANDO DEP CON

126.025 281.425

ATIS

132.55

CLNC DEL

121.9

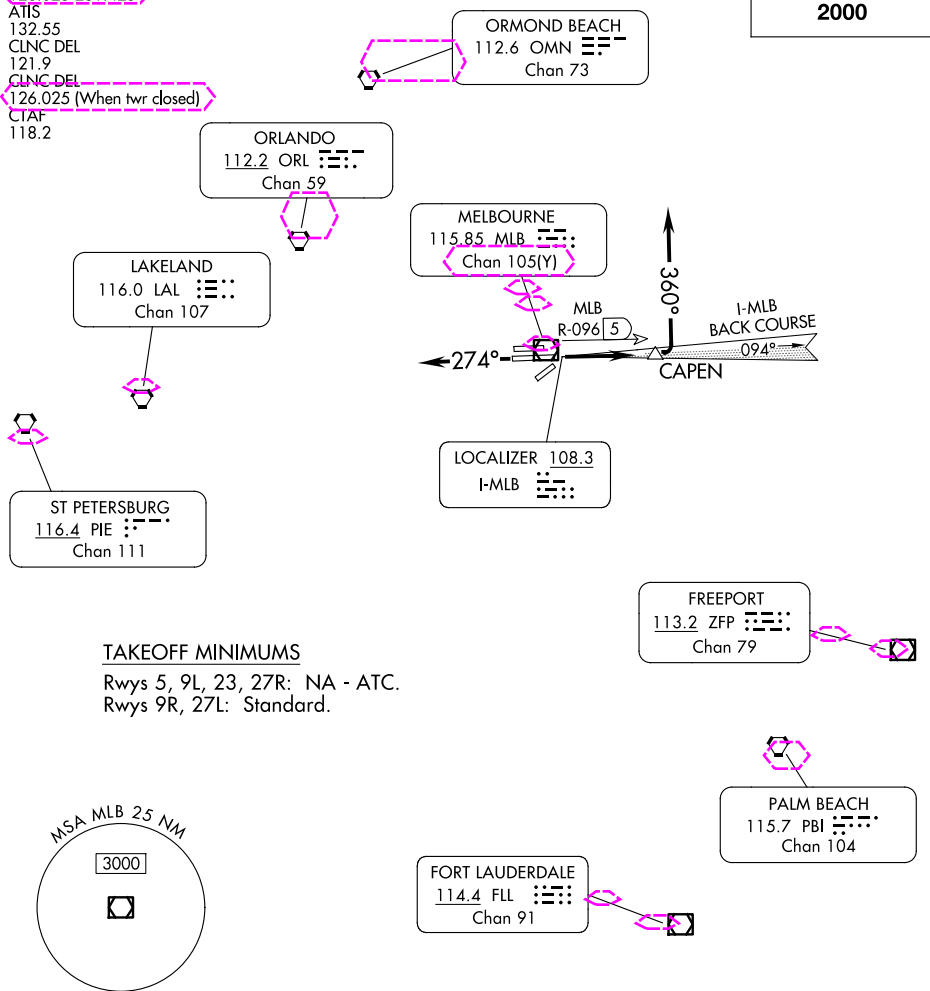
CLNC DEL

126.025 (When twr closed)

CTAF

118.2

RADAR required.

TOP ALTITUDE:
2000

TAKEOFF MINIMUMS

Rwys 5, 9L, 23, 27R: NA - ATC.
Rwys 9R, 27L: Standard.

NOTE: Chart not to scale.



DEPARTURE ROUTE DESCRIPTION

TAKEOFF RUNWAY 9R: Climb on MLB VOR/DME R-096 to CAPEN/MLB VOR/DME 5.3 DME, then turn left heading 360°, thence. . .TAKEOFF RUNWAY 27L: Climb on heading 274°, thence. all aircraft expect RADAR vectors to join assigned route, maintain 2000.
Expect clearance to filed altitude/flight level 10 minutes after departure.

MELBOURNE EIGHT DEPARTURE

(MLB8.MLB) 12JUN25

MELBOURNE, FLORIDA
MELBOURNE ORLANDO INTL (MLB)