

MELBOURNE, FLORIDA

AL-252 (FAA)

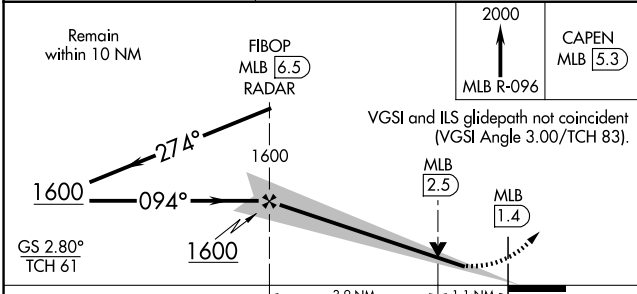
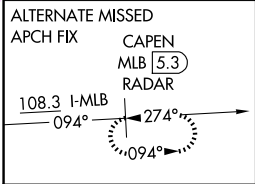
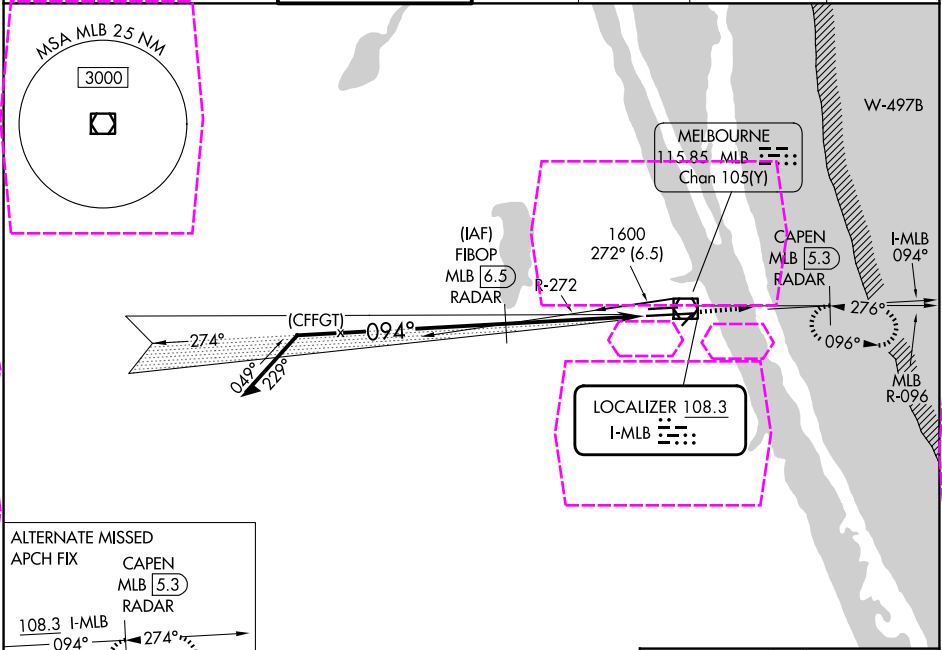
25219

LOC I-MLB 108.3	APP CRS 094°	Rwy Ldg TDZE Apt Elev	10181 32 33
---------------------------	------------------------	-----------------------------	--

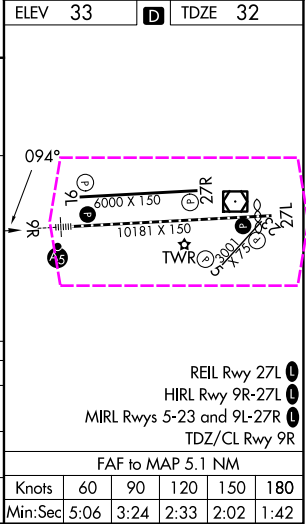
ILS or LOC RWY 9R
MELBOURNE ORLANDO INTL (MLB)

DME or RADAR required.	MALSR	MISSED APPROACH: Climb to 2000 on MLB VOR/DME R-096 to CAPEN/MLB VOR/DME 5.3 DME/RADAR and hold, continue climb-in-hold 2000.
------------------------	-------	---

ATIS 132.55	ORLANDO APP CON 126.025 281.425	MELBOURNE TOWER ★ 118.2 (CTAF) 257.8	GND CON 121.9	CLNC DEL 121.9	CLNC DEL 126.025 (When twr closed)	UNICOM 122.95
-----------------------	---	---	-------------------------	--------------------------	---	-------------------------



CATEGORY	A	B	C	D
S-ILS 9R	232/18 200 (200-½)			
S-LOC 9R	480/24	448 (500-½)	480/45	448 (500-¾)
CIRCLING	500-1 467 (500-1)	560-1 527 (600-1)	680-1¾ 647 (700-1¾)	880-2¾ 847 (900-2¾)



MELBOURNE, FLORIDA
Amdt 13 20FEB25

28°06'N-80°39'W

MELBOURNE ORLANDO INTL (MLB)
ILS or LOC RWY 9R