




| | | | |
|---------------------------------------|------------------------|-----------------------------|---|
| VORTAC OED 113.6 Chan 83 | APP CRS 325° | Rwy Idg TDZE Agt Elev | N/A N/A 1335 |
|---------------------------------------|------------------------|-----------------------------|---|

VOR/DME-C

ROGUE VALLEY INTL/MEDFORD (MFR)




 Circling NA for Cats C and D northeast of Rwy 14-32. -3°C

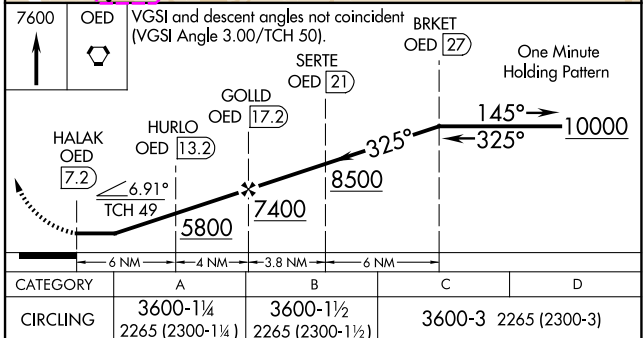
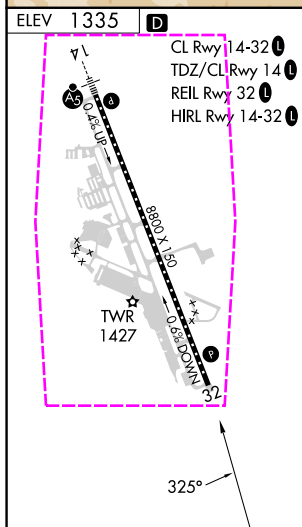
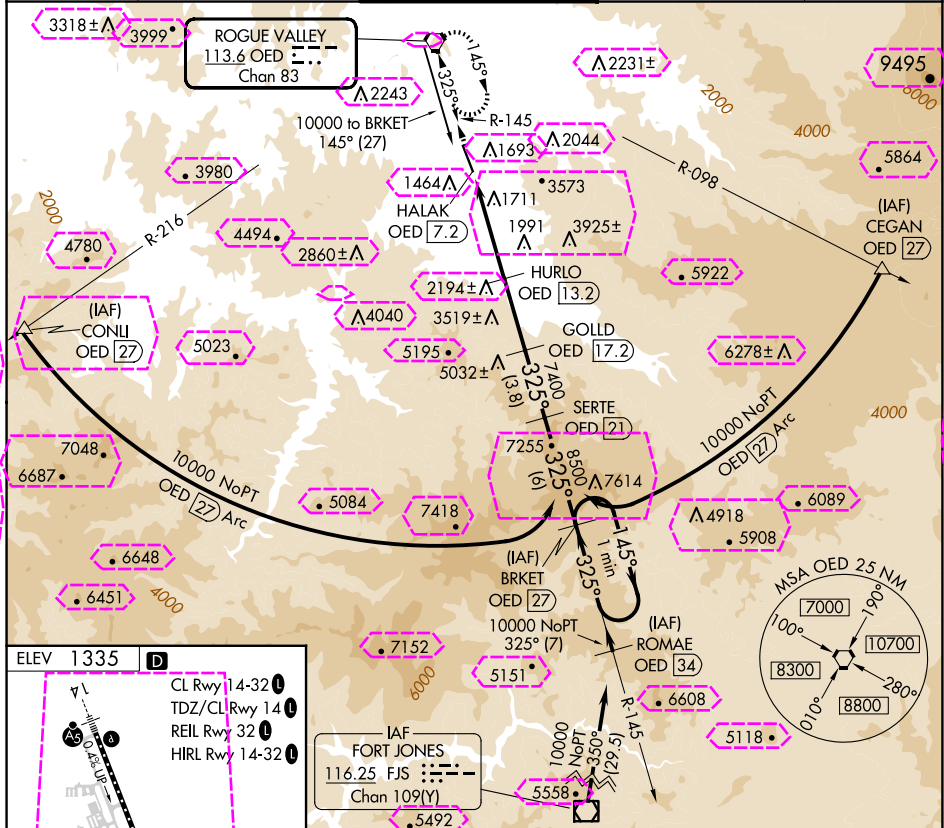
MISSED APPROACH: Climb to 7600 direct OED VORTAC and hold, continue climb-in-hold to 7600.

ATIS
127.25

CASCADE APP CON ★
124.3 379.9

MEDFORD TOWER ★
119.4 (CTAF) **L** 257.8

GND CON
121.8

UNICOM
122.95

MEDFORD, OREGON
Amdt 3B 07OCT21




ROGUE VALLEY INTL/MEDFORD (MFR)
VOR/DME-C

42°22'N-122°52'W

| | | | |
|---------------------------------------|------------------------|-----------------------------|---|
| VORTAC OED 113.6 Chan 83 | APP CRS 325° | Rwy Ldg TDZE Apt Elev | N/A N/A 1335 |
|---------------------------------------|------------------------|-----------------------------|---|

VOR/DME-C

ROGUE VALLEY INTL/MEDFORD (MFR)




 Circling NA for Cats C and D northeast of
 Rwy 14-32.

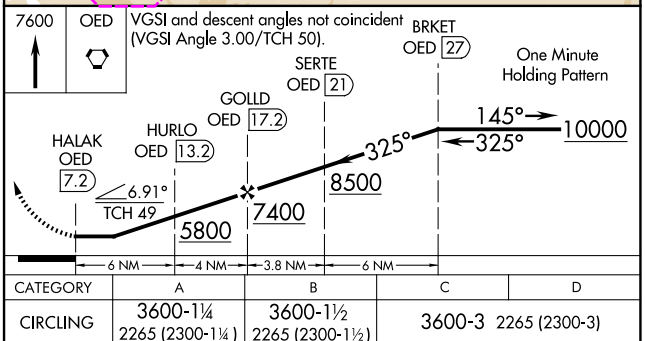
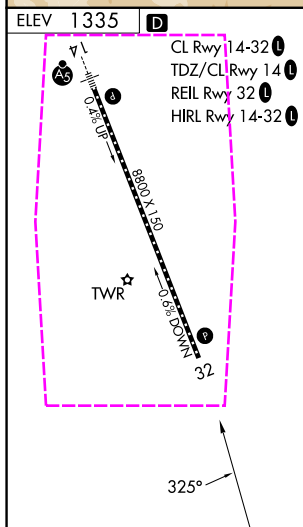
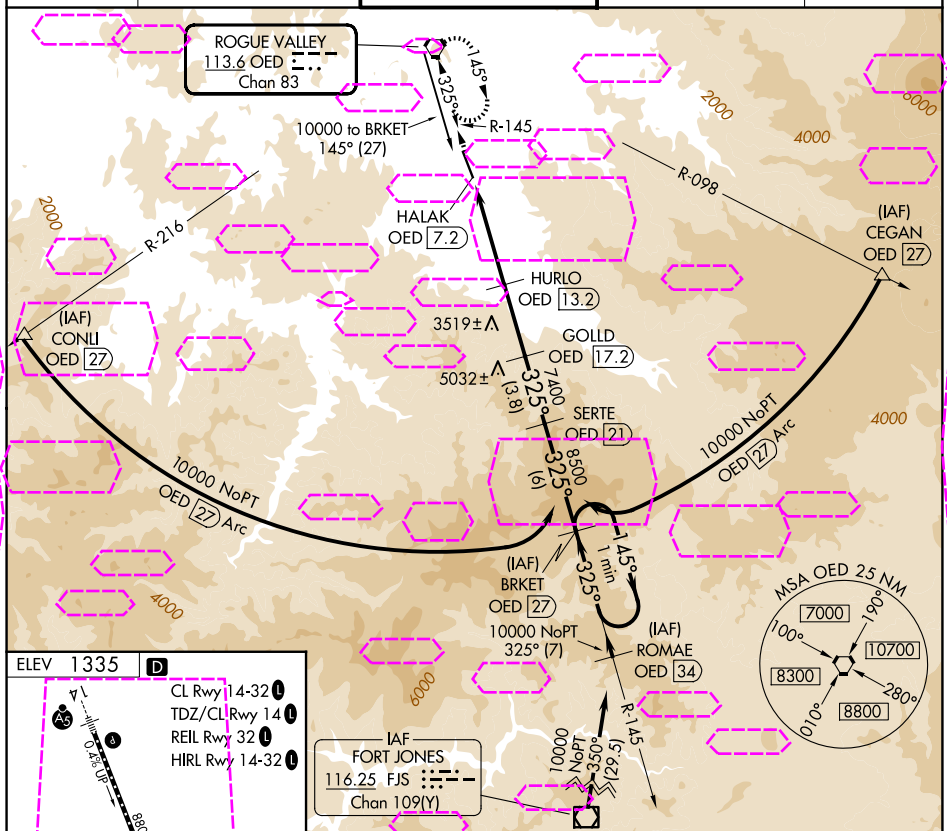
MISSED APPROACH: Climb to 7600 direct OED VORTAC and hold, continue climb-in-hold to 7600.

ATIS
127.25

CASCADE APP CON★
124.3 379.9

MEDFORD TOWER ★
119.4 (CTAF) **L** 257.8

GND CON
121.8

UNICOM
122.95

MEDFORD, OREGON
Amdt 3B 07OCT21

42°22'N-122°52'W

ROGUE VALLEY INTL/MEDFORD (MFR)
VOR/DME-C