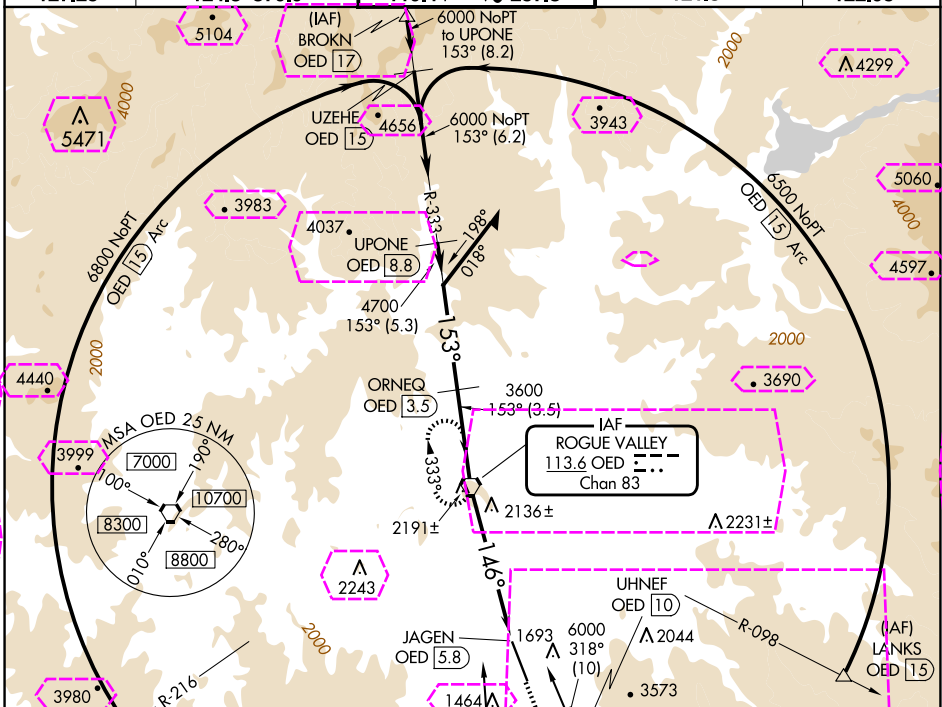


VOR/DME RWY 14
ROGUE VALLEY INTL/MEDFORD (MFR)

MISSED APPROACH: Climb to 2900 then climbing right turn to 6400 direct OED VORTAC and hold, continue climb-in-hold to 6400.

UNICOM	122.95
--------	--------



OED

OED

1.7

1

C

2680-

2680-

ROGUE VALLEY INTL/MEDFORD (MFR)
VOR/DME RWY 14

42°22'N-122°52'W

VOR/DME RWY 14
ROGUE VALLEY INTL/MEDFORD (MFR)

MISSED APPROACH: Climb to 2900 then climbing right turn to 6400 direct OED VORTAC and hold, continue climb-in-hold to 6400.

	OED
--	-----

1

3630\

TCH 73

-146

1.7510

1.7 N	
-------	--

4)	
----	--

41	
42	

$$\begin{array}{|c} 2 \\ 1\frac{1}{2}) \end{array}$$

42°22'N-122°52'W

ROGUE VALLEY INTL/MEDFORD (MFR)
VOR/DME RWY 14