

MEDFORD, OREGON

AL-251 (FAA)

24305

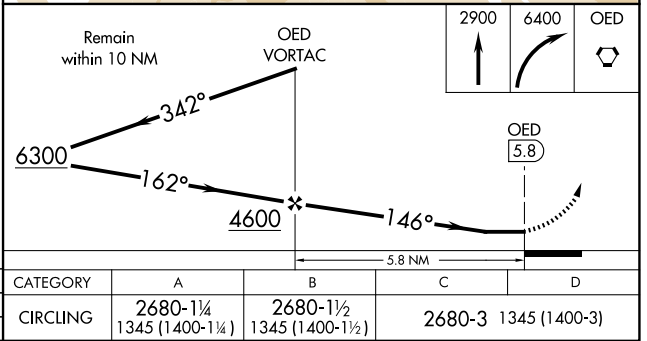
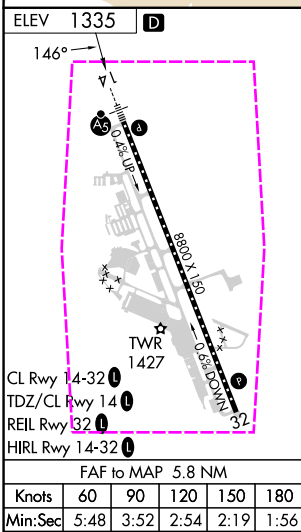
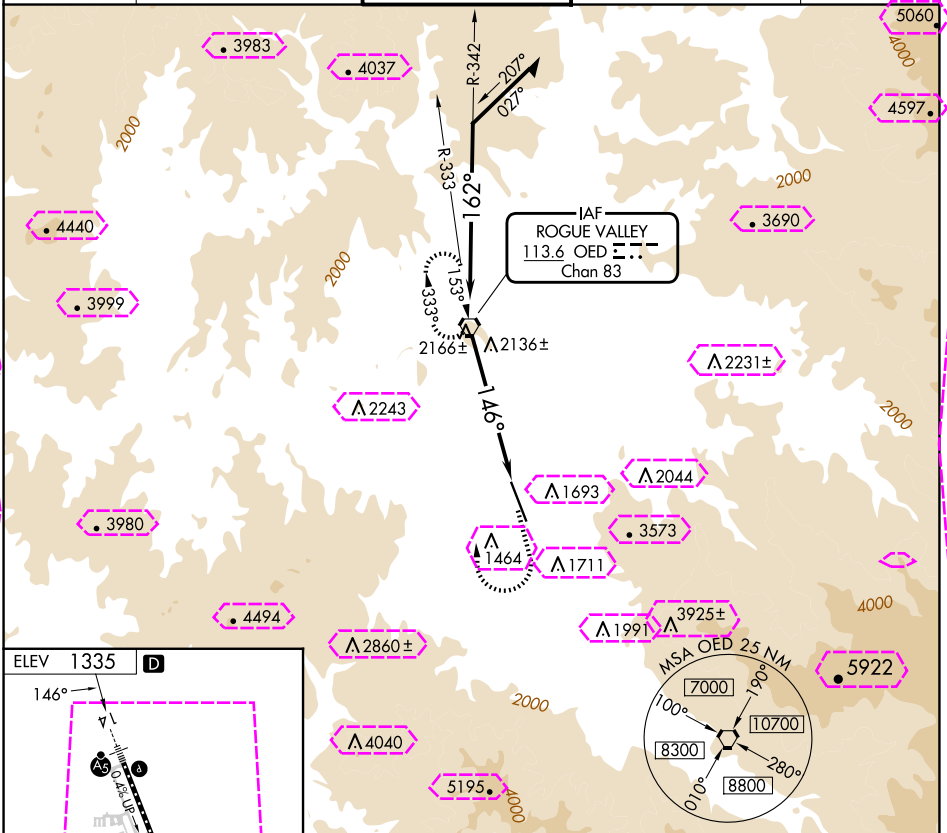
VORTAC OED 113.6 Chan 83	APP CRS 146°	Rwy Idg TDZE Apt Elev N/A N/A 1335
--	------------------------	--

VOR-A

ROGUE VALLEY INTL/MEDFORD (MF'R)

<p>V A -3°C</p> <p>If local altimeter setting not received, procedure NA. Circling NA for Cats C and D northeast of Rwy 14-32.</p>	<p>MISSED APPROACH: Climb to 2900 then climbing right turn to 6400 direct OED VORTAC and hold, continue climb-in-hold to 6400.</p>
--	--

ATIS 127.25	CASCADE APP CON * 124.3 379.9	MEDFORD TOWER * 119.4 (CTAF) 257.8	GND CON 121.8	UNICOM 122.95
-----------------------	---	--	-------------------------	-------------------------



MEDFORD, OREGON
Amdt 4A 07OCT21

42°22'N-122°52'W

ROGUE VALLEY INTL/MEDFORD (MF'R)
VOR-A

NW-1, 10 JUL 2025 to 07 AUG 2025

NW-1, 10 JUL 2025 to 07 AUG 2025

MEDFORD, OREGON

AL-251 (FAA)

25219

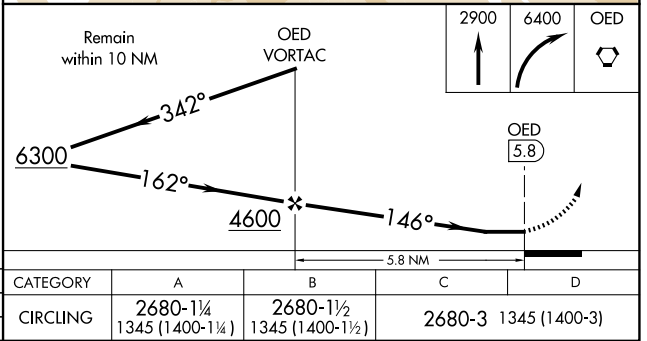
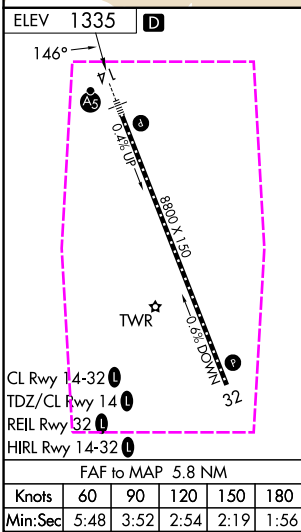
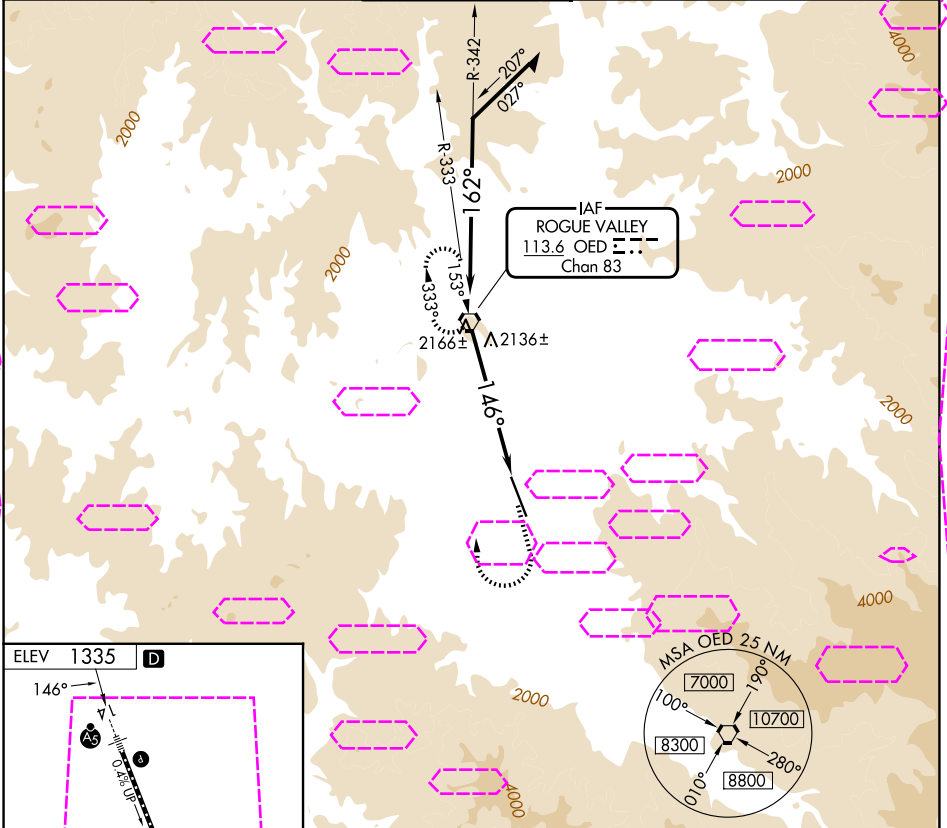
VORTAC OED 113.6 Chan 83	APP CRS 146°	Rwy Ldg TDZE App Elev N/A N/A 1335
--	------------------------	--

VOR-A

ROGUE VALLEY INTL/MEDFORD (MFR)

<p>V A -2°C</p> <p>If local altimeter setting not received, procedure NA. Circling NA for Cats C and D northeast of Rwy 14-32.</p>	<p>MISSED APPROACH: Climb to 2900 then climbing right turn to 6400 direct OED VORTAC and hold, continue climb-in-hold to 6400.</p>
--	--

ATIS 127.25	CASCADE APP CON * 124.3 379.9	MEDFORD TOWER * 119.4 (CTAF) 257.8	GND CON 121.8	UNICOM 122.95
-----------------------	---	--	-------------------------	-------------------------



MEDFORD, OREGON						ROGUE VALLEY INTL/MEDFORD (MFR)					
Amdt 4A 07OCT21						42°22'N-122°52'W					
VOR-A						VOR-A					