

MEDFORD, OREGON

AL-251 (FAA)

24305

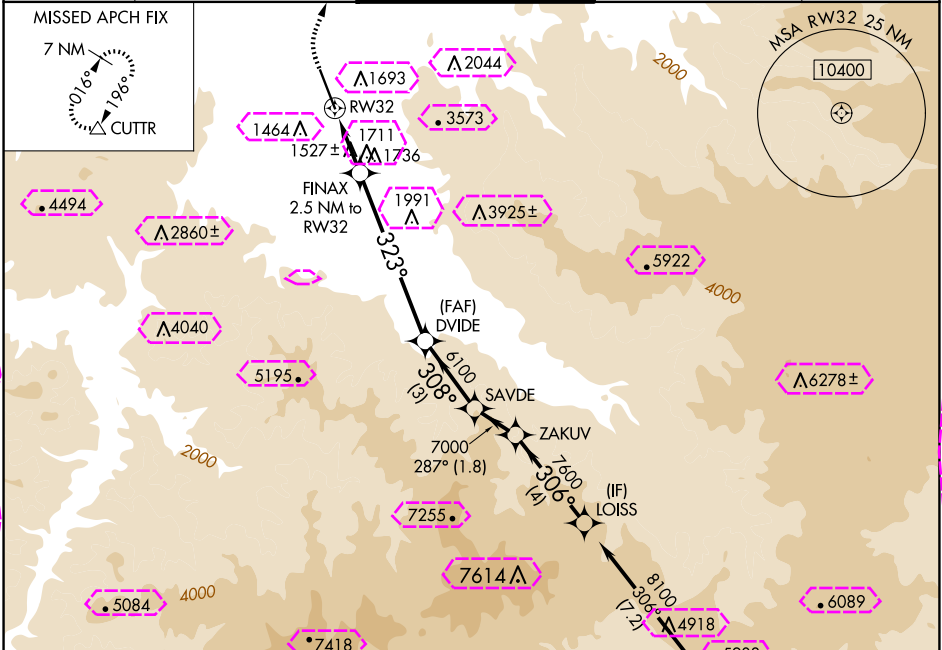
WAAS CH <b>56544</b> <b>W32A</b>	APP CRS <b>323°</b>	Rwy Idg TDZE <b>1335</b> Apt Elev <b>1335</b>
--	------------------------	---

# RNAV (GPS) Y RWY 32

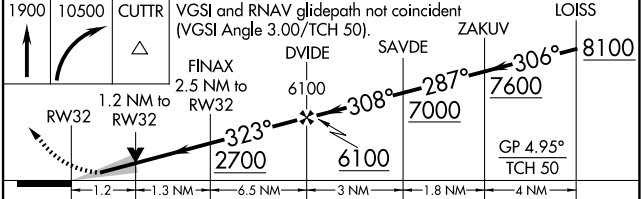
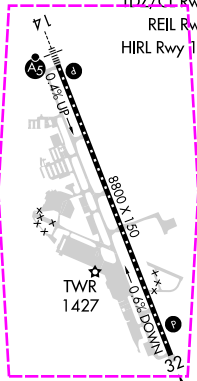
ROGUE VALLEY INTL/MEDFORD (MFR)

RNP APCH - GPS.	Baro-VNAV NA.	MISSED APPROACH: Climb to 1900 then climbing right turn to 10500 direct CUTTR and hold, continue climb-in-hold to 10500.
-----------------	---------------	--

ATIS <b>127.25</b>	CASCADE APP CON* <b>124.3 379.9</b>	MEDFORD TOWER* <b>119.4 (CTAF) 0 257.8</b>	GND CON <b>121.8</b>	UNICOM <b>122.95</b>
-----------------------	--	---	-------------------------	-------------------------



ELEV 1335	D TDZE 1335
CL Rwy 14-32	TDZ/CL Rwy 14
REIL Rwy 32	
HIRL Rwy 14-32	



CATEGORY	A	B	C	D
LPV DA	1610-7/8 275 (300-7/8)		NA	
LNNAV/ VNAV DA	1768-1 1/4 433 (500-1 1/4)		NA	
LNNAV MDA	1780-1 445 (500-1)		NA	
CIRCLING	2000-1 665 (700-1)		NA	

MEDFORD, OREGON  
Orig 15JUN23

42°22'N-122°52'W

ROGUE VALLEY INTL/MEDFORD (MFR)  
RNAV (GPS) Y RWY 32

NW-1, 10 JUL 2025 to 07 AUG 2025

NW-1, 10 JUL 2025 to 07 AUG 2025

MEDFORD, OREGON

AL-251 (FAA)

25219

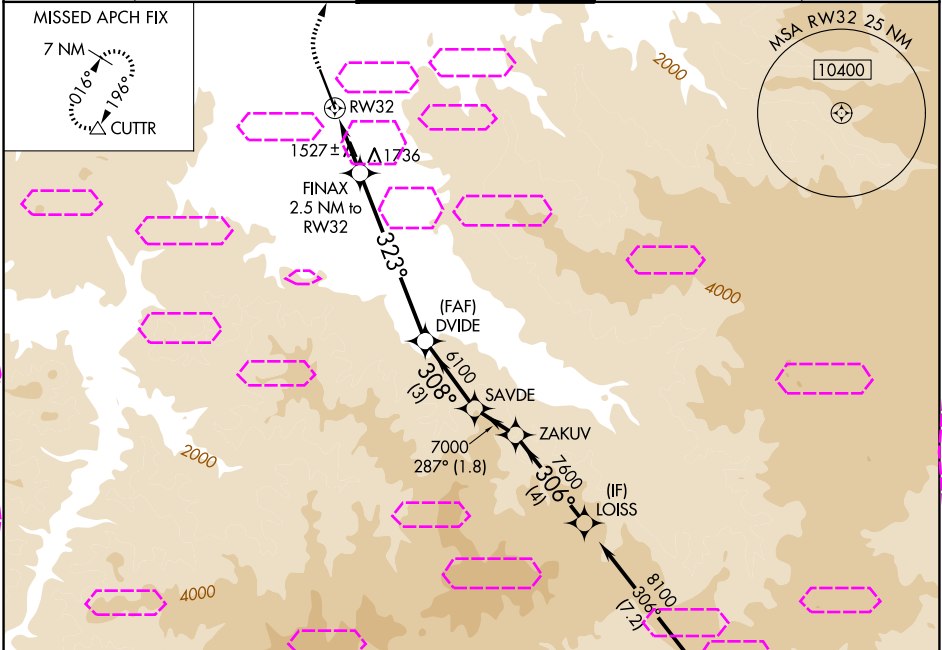
WAAS CH <b>56544</b> <b>W32A</b>	APP CRS <b>323°</b>	Rwy Ldg TDZE <b>1335</b> Apt Elev <b>1335</b>
--	------------------------	---

# RNAV (GPS) Y RWY 32

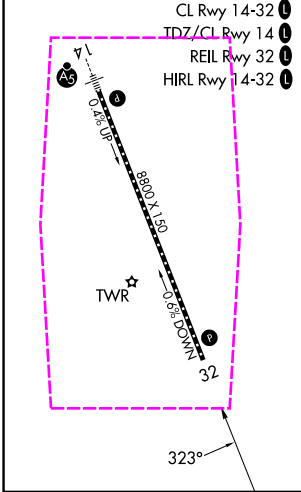
ROGUE VALLEY INTL/MEDFORD (MFR)

RNP APCH - GPS.		MISSED APPROACH: Climb to 1900 then climbing right turn to 10500 direct CUTTR and hold, continue climb-in-hold to 10500.	
Baro-VNAV NA.			

ATIS <b>127.25</b>	CASCADE APP CON* <b>124.3 379.9</b>	MEDFORD TOWER* <b>119.4 (CTAF) 0 257.8</b>	GND CON <b>121.8</b>	UNICOM <b>122.95</b>
-----------------------	--	---	-------------------------	-------------------------



ELEV 1335	D TDZE 1335
-----------	-------------



1900 10500 CUTTR		VGSI and RNAV glidepath not coincident (VGSI Angle 3.00/TCH 50).		LOISS	
FINAX 2.5 NM to RW32		SAVDE		ZAKUV	
RW32 1.2 NM to RW32		DVIDE		SAVDE	
RW32 323° 2700		6100		287° 7000	
1.2		1.3		6.5	
CATEGORY		A		B	
LPV DA		1610-7/8 275 (300-7/8)		NA	
LNAV/VNAV DA		1768-1 4/4 433 (500-1 1/4)		NA	
LNAV MDA		1780-1 445 (500-1)		NA	
CIRCLING		2000-1 665 (700-1)		NA	

MEDFORD, OREGON  
Orig 15JUN23

42°22'N-122°52'W

ROGUE VALLEY INTL/MEDFORD (MFR)  
RNAV (GPS) Y RWY 32

NW-1, 07 AUG 2025 to 04 SEP 2025

NW-1, 07 AUG 2025 to 04 SEP 2025