

MEDFORD, OREGON

AL-251 (FAA)

24305

APP CRS	Rwy Idg	8800
143°	TDZE	1303
	Apt Elev	1335

RNAV (GPS) Y RWY 14

ROGUE VALLEY INTL/MEDFORD (MFR)

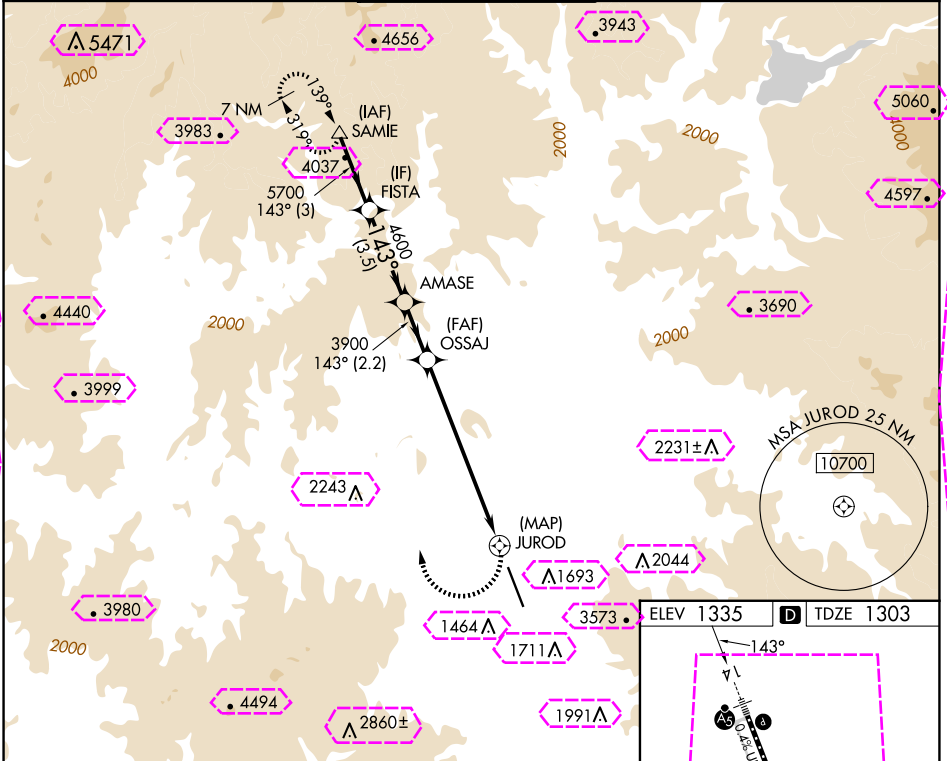
RNP APCH.

When Medford altimeter setting not received, procedure NA.
Inop table does not apply to Cats C and D.

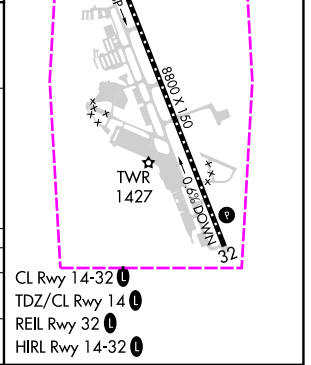
MALS R

MISSED APPROACH: Climbing right turn 7000 direct SAMIE and hold, continue climb-in-hold to 7000.
*Missed approach requires minimum climb of 334 feet per NM to 4800.

ATIS	CASCADE APP CON *	MEDFORD TOWER *	GND CON	UNICOM
127.25	124.3 379.9	119.4 (CTAF) 257.8	121.8	122.95



VGSI and descent angles not coincident (VGSI Angle 3.00/TCH 73).				
CATEGORY	A	B	C	D
LNAV MDA*	2600/40 1297 (1300-3/4)	2600/55 1297 (1300-1)	2600-3 1297 (1300-3)	
LNAV MDA	2600/40 1297 (1300-3/4)	2600/55 1297 (1300-1)	3320-3 2017 (2000-3)	3460-3 2157 (2200-3)



MEDFORD, OREGON
Amdt 2A 07NOV19

42°22'N-122°52'W

ROGUE VALLEY INTL/MEDFORD (MFR)
RNAV (GPS) Y RWY 14

NW-1, 10 JUL 2025 to 07 AUG 2025

NW-1, 10 JUL 2025 to 07 AUG 2025

MEDFORD, OREGON

AL-251 (FAA)

25219

APP CRS	Rwy Ldg	8800
143°	TDZE	1303
	Apt Elev	1335

RNAV (GPS) Y RWY 14

ROGUE VALLEY INTL/MEDFORD (MF'R)

RNP APCH.

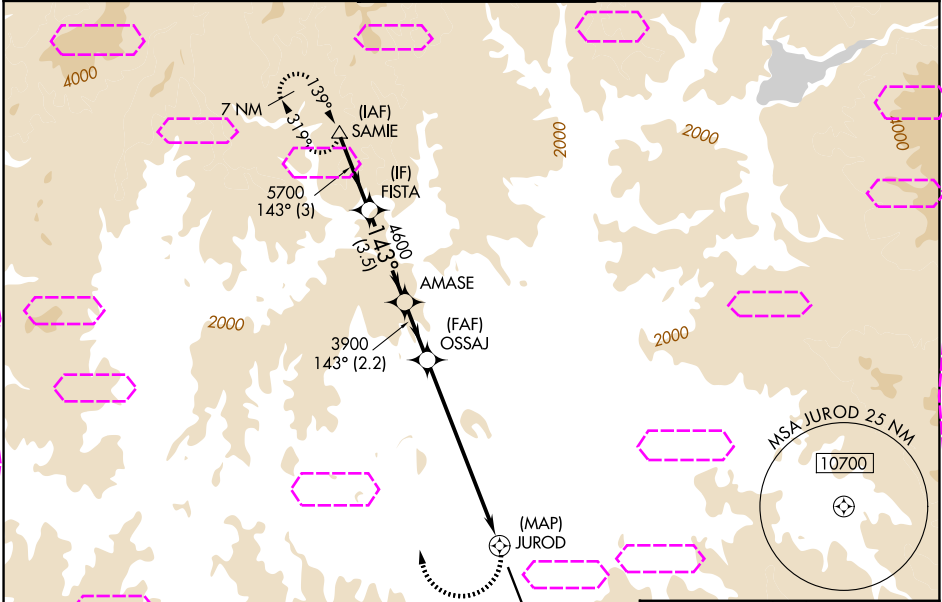
When Medford altimeter setting not received, procedure NA. Inop table does not apply to Cats C and D.

-2°C

MALSR

MISSED APPROACH: Climbing right turn 7000 direct SAMIE and hold, continue climb-in-hold to 7000.
*Missed approach requires minimum climb of 334 feet per NM to 4800.

ATIS 127.25	CASCADE APP CON ★ 124.3 379.9	MEDFORD TOWER ★ 119.4 (CTAF) 257.8	GND CON 121.8	UNICOM 122.95
----------------	----------------------------------	---------------------------------------	------------------	------------------



ELEV 1335		D TDZE 1303		
CATEGORY	A	B	C	D
LNAV MDA*	2600/40 1297 (1300-3/4)	2600/55 1297 (1300-1)	2600-3 1297 (1300-3)	
LNAV MDA	2600/40 1297 (1300-3/4)	2600/55 1297 (1300-1)	3320-3 2017 (2000-3)	3460-3 2157 (2200-3)
MEDFORD, OREGON Amdt 2A 07NOV19		ROGUE VALLEY INTL/MEDFORD (MF'R) 42°22'N-122°52'W RNAV (GPS) Y RWY 14		

NW-1, 07 AUG 2025 to 04 SEP 2025

NW-1, 07 AUG 2025 to 04 SEP 2025