

MEDFORD, OREGON

AL-251 (FAA)

24305

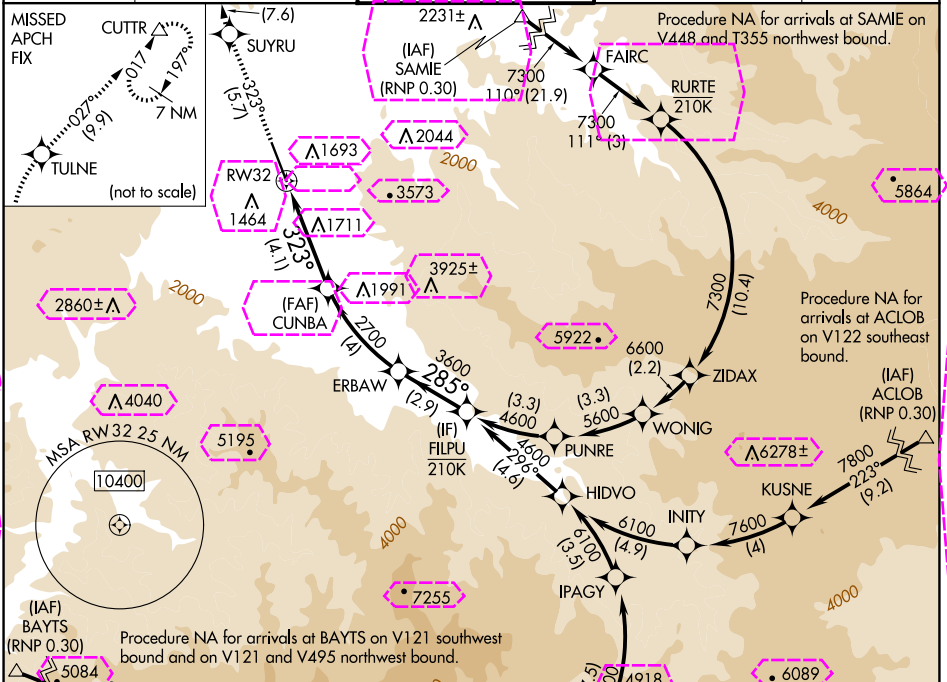
APP CRS	Rwy Jdg	8800
323°	TDZE	1335
	Apt Elev	1335

RNAV (RNP) Z RWY 32

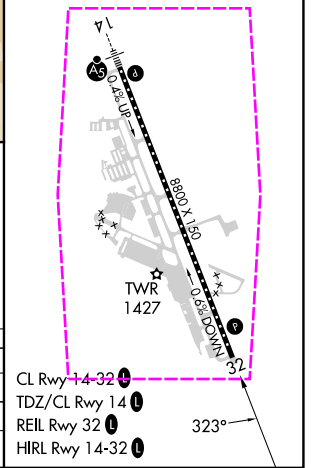
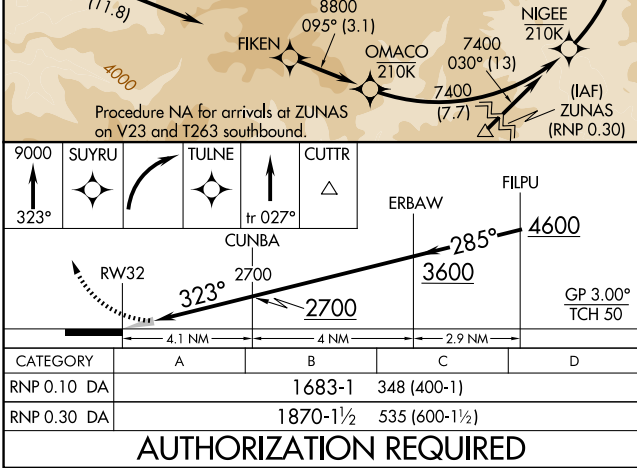
ROGUE VALLEY INTL/MEDFORD (MF'R)

RNP AR APCH-GPS.	MISSED APPROACH: Climb to 9000 on 323° to SUYRU, right turn to TULNE, then on track 027° to CUTTR and hold, continue climb-in-hold to 9000.
-3°C	For uncompensated Baro-VNAV systems, procedure NA below -6°C or above 54°C.

ATIS 127.25	CASCADE APP CON* 124.3 379.9	MEDFORD TOWER* 119.4 (CTAF) 257.8	GND CON 121.8	UNICOM 122.95
----------------	---------------------------------	--------------------------------------	------------------	------------------



ELEV 1335	TDZE 1335
-----------	-----------



AUTHORIZATION REQUIRED

MEDFORD, OREGON
Amdt 1 03NOV22

42°22'N-122°52'W

ROGUE VALLEY INTL/MEDFORD (MF'R)
RNAV (RNP) Z RWY 32

NW-1, 10 JUL 2025 to 07 AUG 2025

NW-1, 10 JUL 2025 to 07 AUG 2025

ROGUE VALLEY INTL/MEDFORD (MFR)
RNAV (RNP) Z RWY 32